



Cumberland County Multi-Hazard Mitigation Plan Update
Participating Jurisdiction Appendices

Appendix 2
Bridgeton City, New Jersey

Preliminary Draft

September 7, 2021

Notes to Preliminary Draft Reviewers

This Preliminary Draft of the Bridgeton City Appendix to the Cumberland County Multi-Hazard Mitigation Plan Update (CC HMPU) includes:

Updated tables containing information available as of September 7th for the community's:

- Working Group
- Critical Facilities
- Mitigation Measures included in the 2016 Mitigation Plan for Four New Jersey Counties (NJ4 HMP)
- Plan Review and Integration document status

In addition, the Preliminary Draft contains:

- Preliminary Hazard Identification and Risk Assessment (HIRA) Update – including mapping and data tabulations regarding vulnerability to natural hazards and social vulnerability considerations
- Hazard Priorities – as determined by the Working Group
- Goals and Strategies

Finally, the Preliminary Draft includes initial lists of proposed Municipal and Multi-Jurisdictional Mitigation Measures to be included in the CC HMPU.

Text highlighted in **yellow** indicates information requested of the community's Working Group as part of this review.

Text highlighted in **blue** indicates information to be provided and/or actions to be taken at a later date.

Please provide any questions, input, or comments to your community's Emergency Management Coordinator:

Gary Denby, Jr.
denbyg@cityofbridgeton.com

This review period will close on Friday, October 1st. However, there will be additional opportunities to participate in the development of the CC HMPU. These opportunities will be identified on the project website (<https://cchmpu21.com>).

Table of Contents

Table of Contents	2-i
Part 1 Overview	2-1
1.1: Cumberland County Multi-Hazard Mitigation Plan Update	2-1
1.2: Bridgeton City Municipal Appendix	2-1
Part 2 Participation	2-2
2.1: Municipal Working Group Participation	2-2
2.2: Public Participation	2-4
Part 3 Hazard Identification and Risk Assessment	2-5
3.1: Profile	2-5
3.2: General Building Stock	2-7
3.3: Critical Facilities	2-8
3.4: Hazard Exposure Assessment	2-13
3.5: Demographic Considerations	2-16
3.6: Observations	2-17
3.7: Hazard Priorities	2-18
Part 4 Mitigation Measures	2-19
4.1: Mitigation Goals and Strategy	2-19
4.2: NJ4 HMP Mitigation Measures	2-20
4.3: Municipal Mitigation Measures – Identification	2-23
4.4: Municipal Mitigation Measures – Implementation	2-24
4.5: Multi-Jurisdictional Mitigation Measures	2-25
4.6: Authorities, Policies, Programs, Resources, and Plan Integration	2-27

Table of Contents

List of Figures

Figure 2-1: Bridgeton City Location Map	2-5
Figure 2-2: Bridgeton City Base Map	2-6
Figure 2-3: Bridgeton City Building Footprints	2-7
Figure 2-4: Bridgeton City Critical Facilities	2-13
Figure 2-5: Bridgeton City Critical Facilities & 1% Annual Chance Flood Zone	2-14
Figure 2-6: Bridgeton City Social Vulnerability Index: Overall Scores	2-15
Figure 2-7: Bridgeton City Mitigation Project Locations	2-26

List of Tables

Table 2-1: Bridgeton City Working Group	2-2
Table 2-2: Public Participation	2-4
Table 2-3: Bridgeton City Buildings per Land Use Type	2-7
Table 2-4: Bridgeton City Critical Facilities Inventory	2-8
Table 2-5: Bridgeton City General Building Stock Hazard Exposure	2-15
Table 2-6: Bridgeton City Critical Facilities Hazard Exposure	2-15
Table 2-7: Bridgeton City General Population Demographics	2-16
Table 2-8: Bridgeton City Social Vulnerability Considerations	2-17
Table 2-9: Status of Bridgeton City NJ4 HMP Mitigation Measures	2-20
Table 2-10: Bridgeton City Municipal Mitigation Measures Identification	2-23
Table 2-11: Bridgeton City Municipal Mitigation Measures Implementation	2-24
Table 2-12: Bridgeton City Multi-Jurisdictional Mitigation Measures	2-25

Attachments

Attachment 2.A: Public Review Comments	2.A-1
Attachment 2.B: Adoption Resolution	2.B-1
Attachment 2.C: Approval Letter	2.C-1

Part 1: Overview

Part 1.1: Cumberland County Multi-Hazard Mitigation Plan Update

The Cumberland County Multi-Hazard Mitigation Plan Update (CC HMPU) incorporates input from all 15 participating jurisdictions in Cumberland County, including Cumberland County and 14 separate municipalities.

The CC HMPU is an update of the Mitigation Plan for Four New Jersey Counties (NJ4 HMP) that was completed by all fifteen jurisdictions in Cumberland County along with over 70 additional jurisdictions from Camden, Gloucester, and Salem Counties. The Cumberland County portions of the NJ4 HMP were adopted by the participating jurisdictions and approved by the Federal Emergency Management Agency in 2016.

The CC HMPU has two main parts:

- Cumberland County Multi-Hazard Mitigation Plan Update, or the “Base Plan”.
- County and Municipal Appendices.

The Base Plan [will include] descriptions and information that is common to all 15 participating jurisdictions organized according to the following three focus areas:

- Planning Process
- Hazard Identification and Risk Assessment
- Mitigation Measures

The County and Municipal Appendices include specific information for these same three focus areas for each of the 15 participating jurisdictions. Detailed tabulations are included in these Municipal Appendices for critical facilities, the status of past mitigation activities, and proposed mitigation measures for each municipality.

Part 1.2: Bridgeton City Municipal Appendix

This Municipal Appendix is focused on Bridgeton City in Cumberland County, New Jersey.

The Bridgeton City Municipal Working Group [will recommend] the Bridgeton City Municipal Appendix for adoption to the Bridgeton City Council.

The Bridgeton City Council [will adopt] the Municipal Appendix by resolution (see Attachment B: Adoption Resolution).

Region II of the Federal Emergency Management Agency [will approve] the Municipal Appendix (see Attachment C: Approval Letter).

Part 2: Participation

Part 2.1: Municipal Working Group Participation

Part 2.1 includes:

- *Municipal Working Group members including positions in the community, meetings and work sessions attended, and specific contributions to the Municipal Appendix*
- *Municipal positions and organizations that were invited but were not able to participate in the plan update process*
- *Municipal positions and organizations that have been recommended by the Federal Emergency Management Agency (FEMA) as candidates for participation on Municipal Working Groups but do not exist in the municipality*

Table 2-1 identifies the Municipal Working Group members. As [will be] detailed in *Section 2: Planning Process* of the Base Plan, the Municipal Working Groups are comprised of community representatives who worked to make sure mitigation measures included in the Municipal Appendix addressed the risks faced by residents, businesses, and property owners and reflected the priorities of the community.

Municipal Working Group members reviewed briefing materials and contributed during Work Sessions and Meetings and [will review] the Preliminary Draft and Draft versions of the CC HMPU Base Plan and Appendices. The Working Group will also continue to stay involved during the implementation and maintenance of the CC HMPU.

Due to the on-going COVID-19 pandemic during the plan update process, Working Group meetings were conducted in a variety of ways including virtual meetings. However, when local conditions permitted, in-person meetings were conducted.

Note: Two members of the Working Group also participated in the development of the 2016 NJ4 HMP. These members are indicated with an () following their last names.*

Table 2-1: Bridgeton City Working Group

First Name	Last Name	Department	Position	Project Kick-off Meeting ¹	Round 1 Work Session ²	Round 2 Work Session ³	Working Group Meeting ⁴	Contribution ⁵
Gary	Denby	Office of Emergency Management / Fire/EMS Department	OEM Coordinator	<input checked="" type="checkbox"/>	<input checked="" type="checkbox"/>			Organized Working Group and Work Sessions.
Kevin	Rabago, Sr. *	Administration	Business Administrator					
Michael	Gaimari	Police Department	Chief of Police					
[provide name]		Office of Development and Planning	Director					

¹ Project Kickoff Meeting was held on May 20, 2021.

² Round 1 Work Session was held on August 27, 2021.

³ Round 2 Work Session [will be] held on [to be determined].

⁴ Working Group Meeting [will be] held on [to be determined (if applicable)].

⁵ Additional or unusual contributions are noted in the far-right hand column.

Part 2: Participation

First Name	Last Name	Department	Position	Project Kick-off Meeting ¹	Round 1 Work Session ²	Round 2 Work Session ³	Working Group Meeting ⁴	Contribution ⁵
Dean	Dellaquila	Public Works	Director Public Works / Recycling Coordinator					
Todd	Bowen	Fire and EMS Department	Chief		<input checked="" type="checkbox"/>			
Michael	Hitchner	Fire and EMS Department	Deputy Chief		<input checked="" type="checkbox"/>			
[provide name]		Construction/Code Enforcement	Zoning Officer/Inspector					
Dennis	Sharpe	Construction	Construction Officer / Building Official / [confirm position includes] Floodplain Administrator					
Nicole	Albanese *	Bridgeton Board of Education	Business Administrator					
[provide name]		Bridgeton Board of Education	Security Director					
[provide name]		Bridgeton Board of Education	Maintenance Supervisor					

The following lists candidate positions and organizations within the community that [will be extended invitations to participate] during the development of the Municipal Appendix. These positions and organizations will continue to be extended invitations to participate during subsequent plan implementation and maintenance activities.⁶

- Elected Officials - Mayor and City Council
- Business Associations – via the Chamber of Commerce
- Community / Faith-Based Organizations
- Major Employers and Businesses – including Ardagh Glass (glass manufacturer)
- Healthcare Institutions – including Complete Care Health Care Network

The following lists positions and organizations that are generally recommended for consideration as members of the Municipal Working Groups by FEMA but do not currently exist within the community. An invitation to participate will be extended if positions are created or filled and as organizations are formed.

- GIS / IT Specialist [confirm if services are provided by Cumberland County]
- Environmental Organizations

⁶ Plan implementation and maintenance activities [will be] described in Section 4: Mitigation Measures of the CC HMPU Base Plan.

Part 2: Participation

Part 2.2: Public Participation

Part 2.2 **will include** all opportunities provided to the public and interested parties in the municipality to participate during the plan update process.

Table 2-2 **will identify** the date, type of involvement, and location (where applicable) for all opportunities provided to the public and interested parties to participate in the development of the plan update.

Table 2-2: Public Participation

Date	Type of Involvement	Location
[insert date link was established]	Link to Project Website ⁷ established and maintained.	[insert municipal website URL]
[insert date meeting was held (if applicable)]	Public meeting conducted with presentation and open discussion.	[insert location]
September 8, 2021	Preliminary Municipal Appendix available for public comment.	Project Website
[insert date link was established]	Notice posted re: Preliminary Municipal Appendix review period with link to Project Website.	[insert municipal website URL]
[date(s) to be determined]	Public outreach via [insert audience(s) and outreach method(s)].	[insert location(s)]
[date to be determined]	Draft Municipal Appendix will be available for public comment.	Project Website
[date to be determined]	Public hearing will be conducted regarding the Draft Municipal Appendix providing for open discussion and public comment.	[insert location]

Public comments and input received for the Preliminary Draft and Draft versions of the Municipal Appendix **will be**:

- Considered by the Municipal Working Group and **will be** incorporated into the Municipal Appendix where appropriate.
- Included in Attachment A to the Municipal Appendix along with a brief explanation of if and how the comments were addressed in the Municipal Appendix.

In addition, the Municipal Appendix **will be** adopted as part of a regularly scheduled public meeting (see Attachment B: Adoption Resolution).

Public education and outreach is an on-going mitigation measure included in the Municipal Appendix.⁸ In addition, public participation will continue to be encouraged during subsequent plan implementation and maintenance activities.⁹

⁷ <https://cchmpu21.com/documents>

⁸ See Mitigation Measure M-1 in Part 4 of the Municipal Appendix.

⁹ Public education and outreach **will be** described in *Section 4: Mitigation Measures* of the CC HMPU Base Plan.

Part 2: Participation

Part 3: Hazard Identification and Risk Assessment

Part 3 includes seven subparts:

- Part 3.1: Profile
- Part 3.2: General Building Stock
- Part 3.3: Critical Facilities
- Part 3.4: Hazard Exposure Assessment
- Part 3.5: Demographic Considerations
- Part 3.6: Observations
- Part 3.7: Hazard Priorities

Part 3.1: Municipal Profile

Bridgeton City is located in the north-central part of Cumberland County (See Figure 2-1).

Figure 2-1: Bridgeton City Location Map

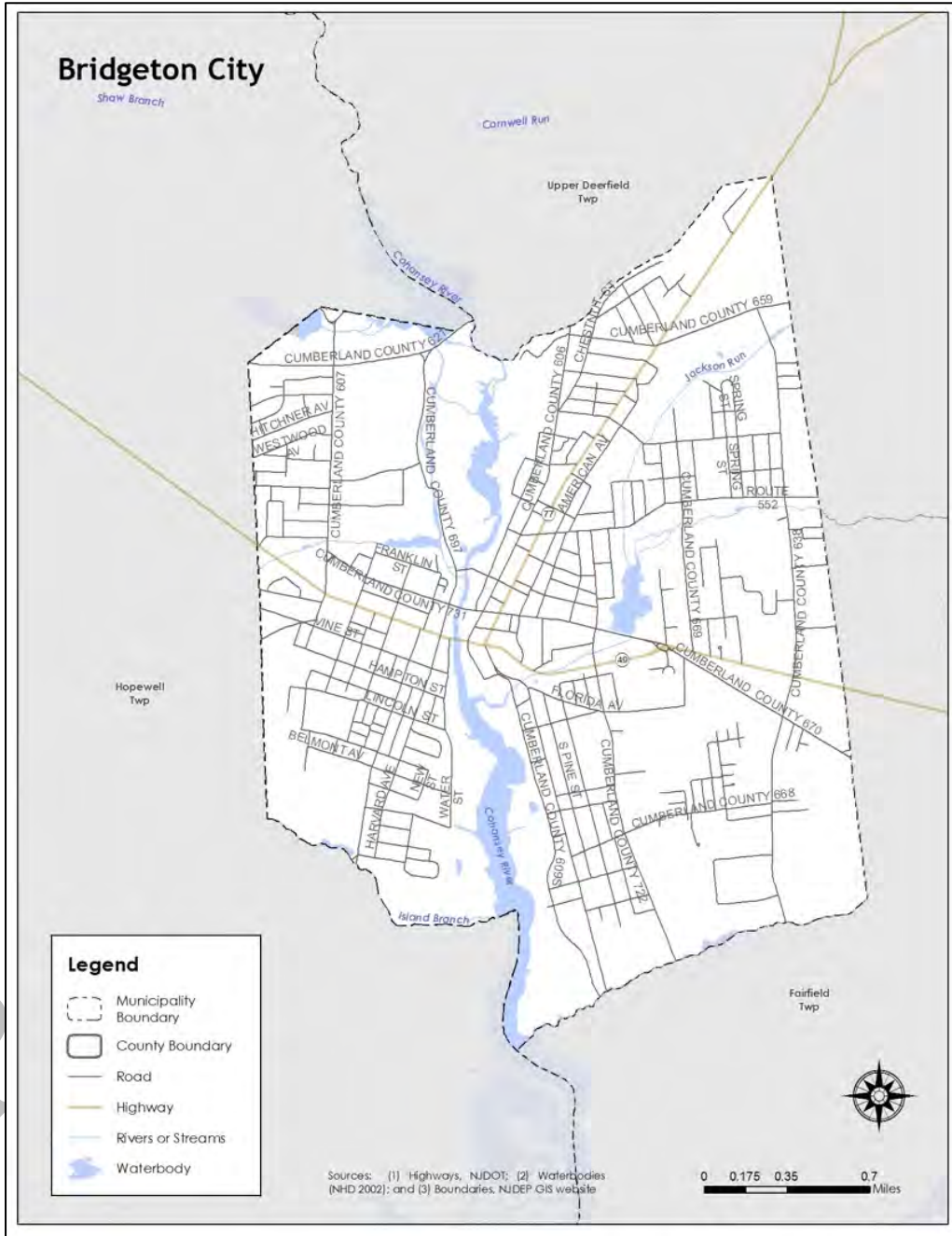


Part 2: Participation

Bridgeton City is a small inland city with the highest population density of the fourteen municipalities in Cumberland County. Over 85% of the housing stock was built before 1980, and one-third are more than 70 years old.

Per Figure 2-2, major water courses include the Cohansey River and Jackson Run. Major transportation routes include State Highway Routes 49 and 77. The land is gently rolling.

Figure 2-2: Bridgeton City Base Map



Part 2: Participation

Part 3.2: General Building Stock

As of 2015, there are 5,598 buildings in Bridgeton City with a total assessed value of improvements of \$853,168,265. Figure 2-3 shows the footprints of these buildings.

Figure 2-3: Bridgeton City Building Footprints¹⁰

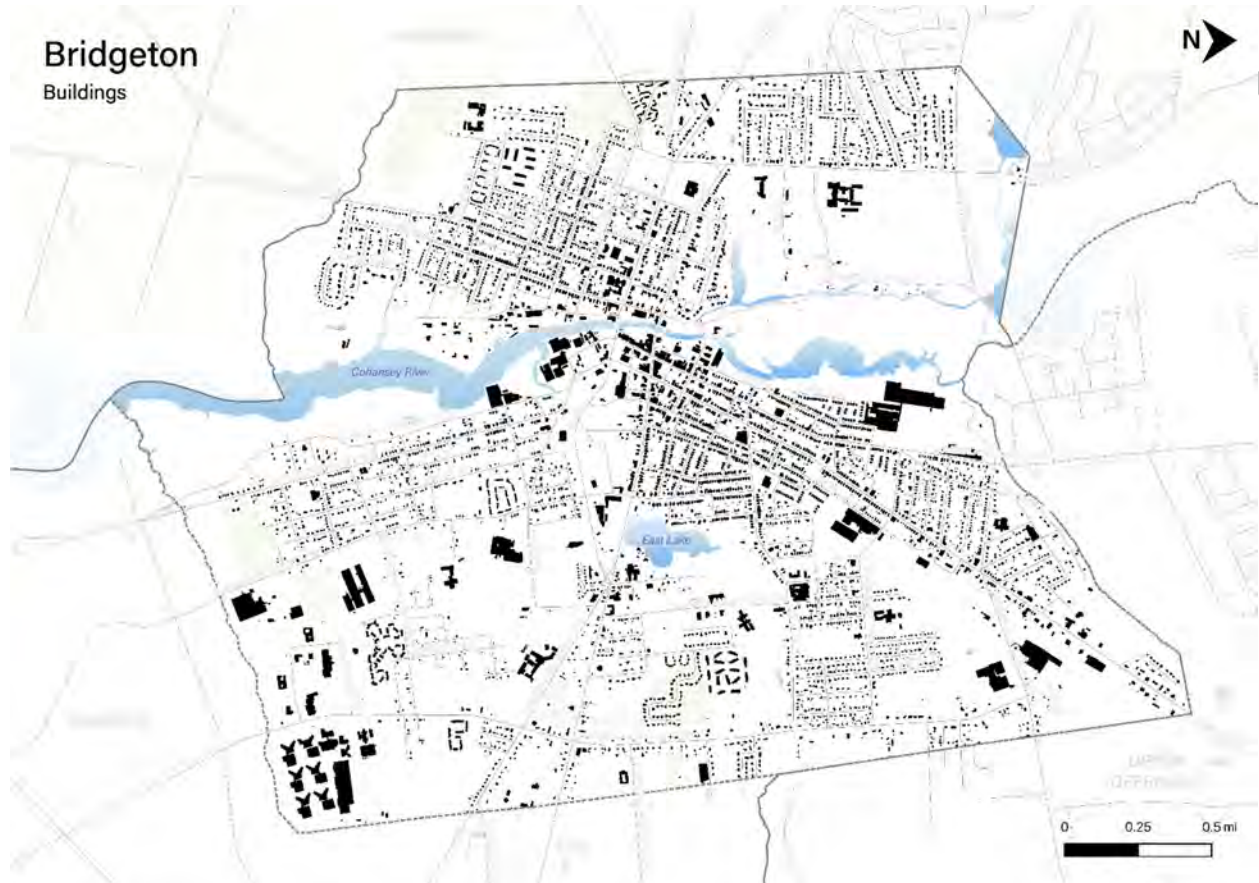


Table 2-3 [will show] the distribution of these structures according to land use distinctions.

Table 2-3: Bridgeton City Buildings per Land Use Type¹¹

Land Use Type	Number of Buildings
Residential	[TBD]
Commercial	[TBD]
Industrial	[TBD]

¹⁰ Building footprint data was isolated from “Impervious Surfaces” data (2015) per <https://gisdata-njdep.opendata.arcgis.com/>. Note: This (map/publication/report) was developed using New Jersey Department of Environmental Protection Geographic Information System digital data, but this secondary product has not been verified by NJDEP and is not state-authorized or endorsed.

¹¹ Land use types [will be] isolated from MOD-IV Parcels and Tax Assessor data composite (2021) per <https://njogis-newjersey.opendata.arcgis.com/documents/parcels-and-mod-iv-of-cumberland-county-nj-shp-download/about> from the New Jersey Office of GIS

Part 2: Participation

Part 3.3: Critical Facilities¹²

As of August 2021, there are forty-nine (49) critical facilities in Bridgeton City.

Critical facilities are prime candidates for mitigation measures due to important functions staged from these facilities prior to, during, and after natural hazards including emergency services and housing vulnerable populations.

Table 2-4 includes current inventory information for municipal critical facilities **and will include** cross-references to related mitigation measures **to be** identified in Part 4 of the Municipal Appendix. Figure 2.4 shows the location of these critical facilities.

In addition to reviewing all entries for accuracy, need to provide confirmation and/or information for all highlighted entries.

Table 2-4: Bridgeton City Critical Facilities Inventory

CF #	Name	Type	Sub-Type	Address	Co-located CF #	Shelter (Y/N)	Generator (Y/N)	Comments	Mitigation Measure #
CF-1	City Hall Annex	Municipal	Administrative Offices	181 East Commerce Street, Bridgeton		N	N		[TBD]
CF-2	Emergency Operations Center	EOC	Stand-alone Facilities	1 Orange Street		N	Y		[TBD]
CF-3	Bridgeton Police Department	Law Enforcement Facilities	Stations	330 Fayette Street, Bridgeton		Y	Y		[TBD]
CF-4	Bridgeton Fire/EMS Headquarters	FireStations / EMS	Stations	4 Orange Street, Bridgeton		N	Y		[TBD]
CF-5	EMS	FireStations / EMS	Stations	15 Mayor Aitken Drive, Bridgeton		N	N		[TBD]
CF-6	Bridgeton Hospital	Health Care Facilities	Private Hospitals	333 Irving Avenue, Bridgeton		N	Y		[TBD]
CF-7	Bridgeton Public Works	Public Works	Combined Administrative Office / Maintenance Yard	101 Florida Avenue, Bridgeton		N/A	N		[TBD]
CF-8	Water Department	Utilities – Water	Administrative Offices	2 South Industrial Boulevard		N/A	N		[TBD]

¹² Critical facility definitions and considerations **will be** described in *Section 3: Hazard Identification and Risk Assessment* of the CC HMPU Base Plan.

Part 2: Participation

CF #	Name	Type	Sub-Type	Address	Co-located CF #	Shelter (Y/N)	Generator (Y/N)	Comments	Mitigation Measure #
CF-9	Main Reservoir	Utilities – Water	Reservoir	2 Park Avenue, Bridgeton		N/A	Y		[TBD]
CF-10	Treatment Plant and Elevated Storage	Utilities – Water	Combined Water Treatment Plant / Water Tower	Sunny Slope Drive, Bridgeport		N/A	Y	No physical address.	[TBD]
CF-11	Treatment Plant	Utilities – Water	Treatment Plants	2 South Industrial Boulevard, Bridgeport		N/A	Y ¹³	Radium treatment plant	[TBD]
CF-12	Well #s 2 and 24	Utilities – Water	Combined Pump Station / Wellhead	440 South East Street, Bridgeton		N/A	N ¹⁴	2 nd largest production well	[TBD]
CF-13	Well 13	Utilities – Water	Combined Pump Station / Wellhead	Sunny Slope Drive, Bridgeton	CF- 9	N/A	N	No physical address. Largest production well; includes Radium Treatment Plant.	[TBD]
CF-14	Well #s 18 and 22	Utilities – Water	Combined Pump Station / Wellhead	310 South Burlington Road, Bridgeton		N/A	N		[TBD]
CF-15	Well #s 19, 20, and 23	Utilities – Water	Combined Pump Station / Wellhead	445 South East Street, Bridgeton		N/A	N ⁸		[TBD]
CF-16	Well 21	Utilities – Water	Combined Pump Station / Wellhead	190 South Burlington Road, Bridgeton		N/A	N		[TBD]
CF-17	Station #3	Utilities – Wastewater	Pump Stations / Lift Stations	622 South Avenue, Bridgeton		N/A	N ⁸		[TBD]
CF-18	Station #4	Utilities – Wastewater	Pump Stations / Lift Stations	39 Park Avenue, Bridgeton		N/A	N		[TBD]
CF-19	Station #5	Utilities – Wastewater	Pump Stations / Lift Stations	North Burlington, Bridgeton		N/A	N	No physical address.	[TBD]
CF-20	Station #6	Utilities – Wastewater	Pump Stations / Lift Stations	360 North West Avenue, Bridgeton		N/A	N		[TBD]

¹³ Power and back-up emergency power from adjacent NJ State Prison.

¹⁴ City of Bridgeton has a portable back-up power generator that is adequate to run individual pump stations, but existing wellhead and pump stations do not have hook-ups for portable back-up power generator. As of November 24, 2014, hook-ups for wellhead and pump stations are part of pending post-Superstorm Sandy Cumberland County OEM Energy Resiliency Grant Program application.

Part 2: Participation

CF #	Name	Type	Sub-Type	Address	Co-located CF #	Shelter (Y/N)	Generator (Y/N)	Comments	Mitigation Measure #
CF-21	Station #7	Utilities – Wastewater	Pump Stations / Lift Stations	29 Bertini Drive, Bridgeton		N/A	N		[TBD]
CF-22	Station #8	Utilities – Wastewater	Pump Stations / Lift Stations	89 Manheim Avenue, Bridgeton		N/A	N		[TBD]
CF-23	Station #9	Utilities – Wastewater	Pump Stations / Lift Stations	West Broad Street, Bridgeton		N/A	N	No physical address.	[TBD]
CF-24	Raceway Comfort Station	Utilities – Wastewater	Pump Stations / Lift Stations	35 Mayor Aitken Drive, Bridgeton		N/A	N		[TBD]
CF-25	Zoo	Utilities – Wastewater	Pump Stations / Lift Stations	35 Mayor Aitken Drive, Bridgeton		N/A	N		[TBD]
CF-26	Zoo Station	Utilities – Wastewater	Pump Stations / Lift Stations	35 Mayor Aitken Drive, Bridgeton		N/A	N		[TBD]
CF-27	Sunset Lake Station	Utilities – Wastewater	Pump Stations / Lift Stations	79 West Park Drive, Bridgeton		N/A	N		[TBD]
CF-28	School Board Office ¹⁵	Schools	Public Schools Administrative Offices	41 Bank Street, Bridgeton		N	N	[provide update regarding status of Public-School facilities, CF-28 through CF-37]	[TBD]
CF-29	Warehouse, Bus Storage and Maintenance ¹⁶	Schools	Public School Combined Maintenance Yard / Equipment and Material Storage	515 Bank Street, Bridgeton		N	N	[same as CF-28]	[TBD]
CF-30	Cherry Street Elementary School	Schools (K-8)	Public Schools	11 Cherry Street, Bridgeton		N	N	[same as CF-28]	[TBD]
CF-31	Quarter Mile Lane Elementary School	Schools (K-8)	Public Schools	300 Quarter Mile Lane, Bridgeton		N	N ¹⁷	[same as CF-28]	[TBD]
CF-32	Indian Avenue Elementary School	Schools (K-8)	Public Schools	399 Indian Avenue, Bridgeton		N	N	[same as CF-28]	[TBD]

¹⁵ Roof structure is not considered adequate, but repairs are included in current maintenance and repair programs.

¹⁶ Roof structure is not considered adequate, but repairs are included in current maintenance and repair programs.

¹⁷ Back-up emergency power generator to be added as part of renovation scheduled to be completed by 2016.

Part 2: Participation

CF #	Name	Type	Sub-Type	Address	Co-located CF #	Shelter (Y/N)	Generator (Y/N)	Comments	Mitigation Measure #
CF-33	West Avenue Elementary School	Schools (K-8)	Public Schools	51 North West Avenue, Bridgeton		N	N	[same as CF-28]	[TBD]
CF-34	Buckshutem Road Elementary School and Foster Early Childhood Center	Schools (K-8)	Public Schools	550 Buckshutem Road, Bridgeton		Y	Y	[same as CF-28] Proposed renovation includes back-up generator. ¹⁸	[TBD]
CF-35	Broad Street School	Schools (K-8)	Public Schools	251 West Broad Street, Bridgeton		Y	N	[same as CF-28] Back-up Nuclear Event Congregate Care Shelter. ¹⁹	[TBD]
CF-36	Bridgeton Senior High School	Schools	Public Schools	111 North West Avenue, Bridgeton		Y ²⁰	Y ²¹	[same as CF-28] Radiological Event Congregate Care Shelter. [provide details re: on-going roof replacement]	[TBD]
CF-37	Excel Program	Schools	Public Schools	398 Pearl Street, Bridgeton		N	N	[same as CF-28]	[TBD]
CF-38	Bridgeton Christian School	Schools	Private Schools	27 Central Avenue, Bridgeton		N	N		[TBD]
CF-39	Excel Charter School	Schools	Private Schools	7 Washington Street, Bridgeton		N	N		[TBD]
CF-40	South Jersey Extended Care	Vulnerable Populations Facilities	Private Nursing Homes	99 Manheim Avenue, Bridgeton		N	Y		[TBD]
CF-41	Cheryl L. Chadwich Early Learning Center	Vulnerable Populations Facilities	Private Child Day Care	10 Washington Street, Bridgeton		N	N	Capacity = 75	[TBD]

¹⁸ As of November 24, 2014, hook-ups for wellhead and pump stations are part of pending post-Superstorm Sandy Cumberland County OEM Energy Resiliency Grant Program application.

¹⁹ Roof structure and windows are not considered adequate.

²⁰ Gymnasium is Red Cross-certified.

²¹ Existing back-up power generator for emergency lights only.

Part 2: Participation

CF #	Name	Type	Sub-Type	Address	Co-located CF #	Shelter (Y/N)	Generator (Y/N)	Comments	Mitigation Measure #
CF-42	Cheryl L. Chadwich Early Learning Center	Vulnerable Populations Facilities	Private Child Day Care	110 Cohansey Street, Bridgeton		N	N	Capacity = 125	[TBD]
CF-43	[provide updated name] Day Care	Vulnerable Populations Facilities	Private Child Day Care	27 Gilmore Street, Bridgeton		N	N	Capacity = 43	[TBD]
CF-44	Little Red Hen Pre-School & Day Care, Inc.	Vulnerable Populations Facilities	Private Child Day Care	159 Fayette Street, Bridgeton		N	N	Capacity = 20	[TBD]
CF-45	New Horizon's Child Enrichment Center	Vulnerable Populations Facilities	Private Child Day Care	240 Walnut Street, Bridgeton		N	N	Capacity = 84	[TBD]
CF-46	River's Edge Child Care Center	Vulnerable Populations Facilities	Private Child Day Care	110 Cohansey Street		N	N	Capacity = 136	[TBD]
CF-47	The Cumberland Empowerment Zone 21 st Century Learning Center	Vulnerable Populations Facilities	Private Child Day Care	20 Cherry Street, Bridgeton		N	N	Capacity = 74	[TBD]
CF-48	Toy Box Pre-School, LLC	Vulnerable Populations Facilities	Private Child Day Care	344 Fayette Street, Bridgeton		N	N	Capacity = 26	[TBD]
CF-49	Bridgeton City Zoo	Other Municipal	Zoos	35 Mayor Aitken Drive, Bridgeton		N	N		[TBD]

[identify and provide details for any other nursing homes and/or assisted living facilities within the City (per comments at the Round 1 Working Group meeting)]

Figure 2-4: Bridgeton City Critical Facilities



Note: All mapping corresponding to results described in Parts 3.3 through 3.5 can be viewed in .pdf format at: <https://www.dropbox.com/sh/q5zbd4agdp62gs/AAAFhSe62jS1bNh1OHLyUtgA?dl=0>

Part 3.4: Hazard Exposure Assessment

Hazard exposure assessments [will be completed] for the twelve (12) natural hazards identified in the CC HMPU Base Plan²².

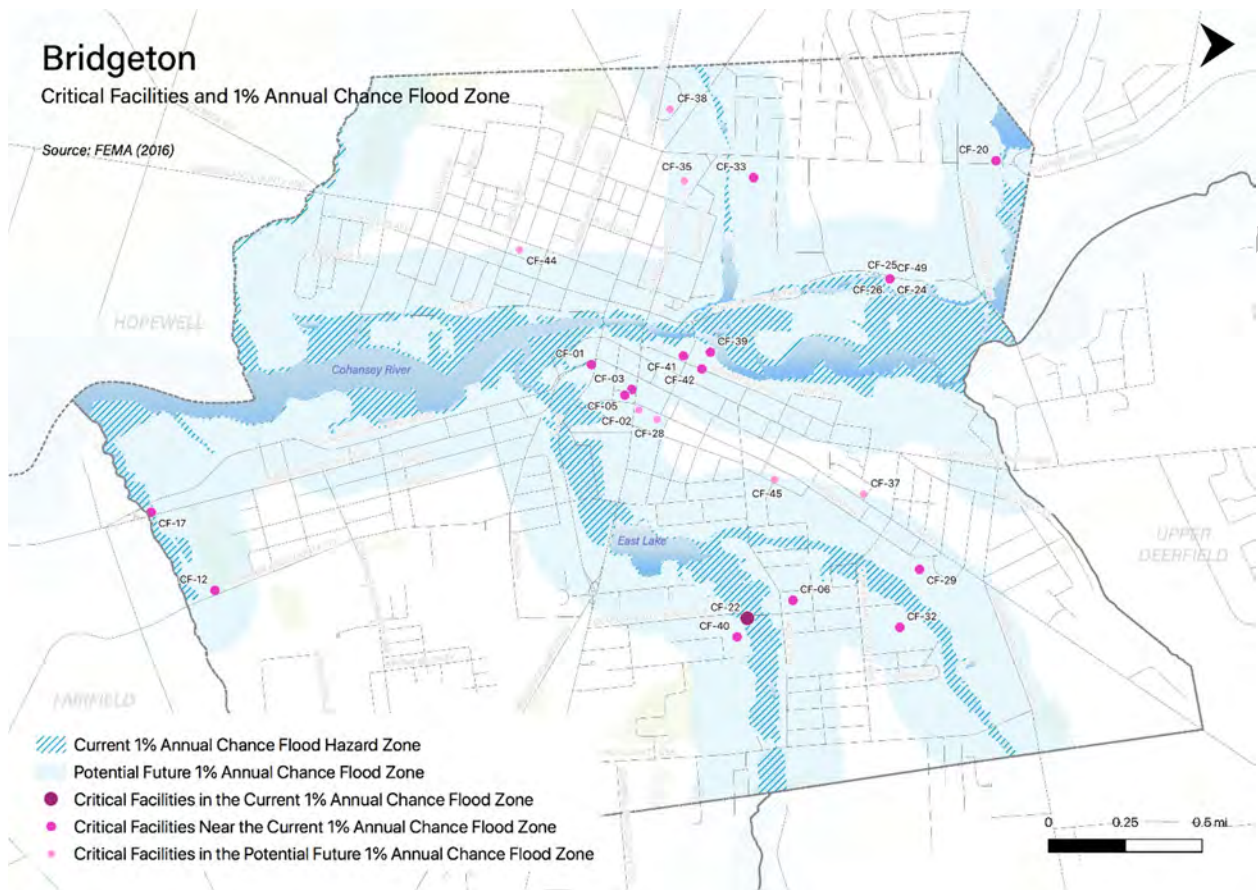
Key results for Bridgeton City are depicted in the following.

Mapping: Figure 2-5 is illustrative of the type of mapping available as a result of the hazard exposure assessment. This figure shows critical facilities that are located in or near (i.e., within 500 feet) the 1% annual flood zone on FEMA's Flood Insurance Rate Maps (FIRMs) or within a potential future 1% annual chance flood zone (i.e., within 1,000 feet).

²² Hazard profiles [will be] included for all twelve natural hazards in Section 3: Hazard Identification and Risk Assessment of the CC HMPU Base Plan.

Part 3: Hazard Identification and Risk Assessment

Figure 2-5: Bridgeton City Critical Facilities and 1% Annual Chance Flood Zone



Mapping results are available for the following hazards (where applicable for individual jurisdictions):

- Coastal Erosion & Sea Level Rise
- Dam Failure [pending data from NJDEP]
- Earthquake
- Extreme High Temperature
- Flood – per FEMA FIRM mapping
- Flood - per National Flood Insurance Program data [pending data from FEMA Region II]
- Geologic Hazards
- High Wind and Severe Weather (heavy summer rains and winter snow loads)
- Levee Failure [pending data from NJDEP]
- Wildfire

Tabulations: Selected data culled from the hazard exposure assessment process is displayed in the following tables:

- Table 2-5 indicates hazard exposure for general building stock
- Table 2-6 indicates hazard exposure for critical facilities

Part 3: Hazard Identification and Risk Assessment

Table 2-5: Bridgeton City General Building Stock Hazard Exposure

Hazard	Number of Exposed Buildings	Percent of Total Buildings in the Jurisdiction	Value of Exposed Buildings	Percent of Total Value in the Jurisdiction
Coastal Erosion ²³	0	N/A	0	N/A
Sea Level Rise - 3 feet increase	26	0.46%	\$3,513,912	0.41%
Flood - Within 1 % Annual Chance Zone	111	2%	\$23,636,365	3%
Flood - Near (within 500 feet) of 1% Annual Chance Zone	1,402	25%	\$208,325,640	24%
Earthquake – Structure built before 1927 ²⁴	1,609	35%	\$103,719,300	30%
High Winds / Severe Weather – Structure built before 1975	4,273	94%	\$302,697,600	87%
Wildfire – Composite score > 2.5 ²⁵	3	-	\$136,400	0.02%

Table 2-6: Bridgeton City Critical Facilities Hazard Exposure²⁶

Hazard	Number of Critical Facilities	CF #s
Coastal Erosion	None	N/A
Sea Level Rise	None	N/A
Flood - Within 1 % Annual Chance Zone	2	CF-05, CF-22
Flood - Near (within 500 feet) of 1% Annual Chance Zone	19	CF-02, CF-04, CF-06, CF-12, CF-17, CF-20, CF-24, CF-25, CF-26, CF-27, CF-29, CF-32, CF-33, CF-39, CF-40, CF-41, CF-42, CF-46, CF-49
Flood – Future potential (within 1,000 feet) 1% Annual Chance Zone	9	CF-01, CF-10, CF-13, CF-28, CF-35, CF-37, CF-38, CF-44, CF-45
Wildfire	21	CF-03, CF-07, CF-08, CF-11, CF-12, CF-15, CF-17, CF-18, CF-20, CF-21, CF-22, CF-24, CF-25, CF-26, CF-30, CF-31, CF-34, CF-40, CF-47, CF-48, CF-49

In addition, all critical facilities in Cumberland County are exposed to the following hazards and potentially subject to power outages, and structural and/or contents damage:

- Earthquake
- Extreme Temperatures
- Severe Weather – Summer (including heavy rains)
- Severe Weather – Winter (including heavy snow loads)

²³ All supporting data for Coastal Erosion, Sea Level Rise (3-foot rise), Flood (all) can be viewed at https://docs.google.com/spreadsheets/d/1fcN5hL3Jz4X7mldFyKs6wol6J6IAR9bSsvJPiQe_A0Q/edit?usp=sharing

²⁴ All supporting data for Earthquake, High Winds, and Severe Weather can be viewed at <https://docs.google.com/spreadsheets/d/1Zx1LZwKQ8esqdv4c9hbbSZurtMjH4UITQWJY1LrZezc/edit?usp=sharing>

²⁵ All supporting data for Wildfire can be viewed at https://docs.google.com/spreadsheets/d/1JAbfd3A-eCHI93pZFaPVuM_H2yvuUzeHCmoijv-oxsw/edit?usp=sharing

²⁶ All supporting data for critical facility hazard exposure can be viewed at <https://docs.google.com/spreadsheets/d/1MPLiOANm7fHoyKuxyWqyang26LTSPayTxJvLmK5IGPg/edit?usp=sharing>

Part 3: Hazard Identification and Risk Assessment

Part 3.5: Demographic Considerations

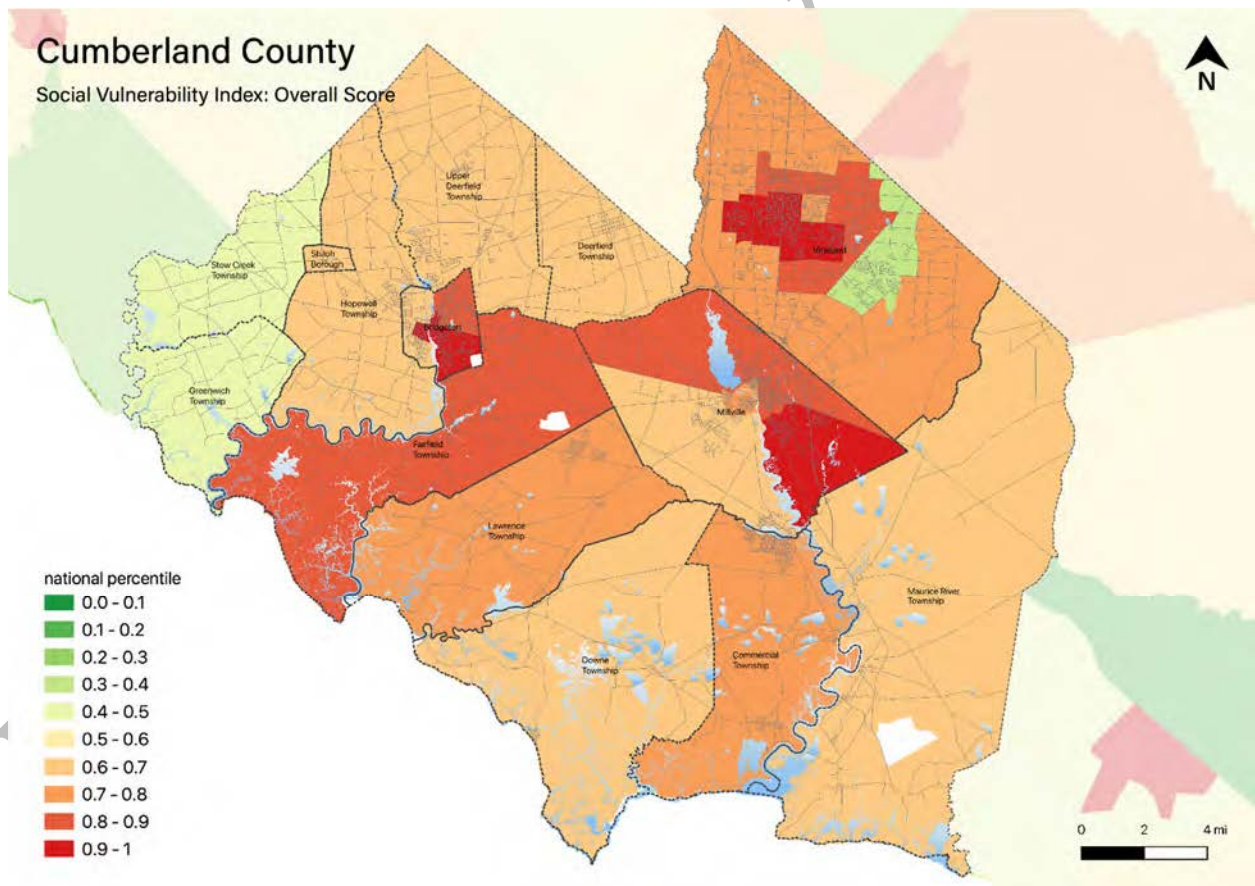
Demographic considerations include general population and land use factors. Table 2-7 includes current population estimates and changes since the previous US Census²⁷:

Table 2-7: Bridgeton City General Population Demographics

Metric	Current Estimates
2010 Population	25,349
2019 Population	24,540
Percent Population Change (2010-2019)	- 3.19%
Land Area	6.18 sq. miles
Population Density	3,970.9 / sq. mile

Demographic considerations also include differences in social vulnerability²⁸. Figure 2-6 shows the overall Social Vulnerability (SVI) Index overall scores for Cumberland County.

Figure 2-6: Cumberland County Social Vulnerability Index: Overall Scores



²⁷ US Census, 2019 ACS 5 Year Estimates, Table ID DP5

²⁸ Social vulnerability considerations [will be] described in Section 3: Hazard Identification and Risk Assessment of the CC HMPU Base Plan.

Part 3: Hazard Identification and Risk Assessment

For Bridgeton City, Table 2-8 includes selected metrics where social vulnerability considerations are notably higher when compared with all national census tracts:

Table 2-8: Bridgeton City Social Vulnerability Considerations²⁹

Metric	Percentile
Socioeconomic Status	90 th
Household Composition & Diversity	72 nd
Minority Status & Language	87 th
Housing Type & Transportation	65 th

In addition, the percentage of residents earning below poverty level = 34.5% (compared with the average in New Jersey of 10.4%).

Part 3.6: Observations

- Outreach and guidance should be provided for residents, business owners, and property owners for:
 - Properties in or near sea level rise, flood zones, or wildfire hazard areas.
 - Older buildings to help evaluate potential risk of damage due to hazards such as Earthquake, High Winds, and Severe Winter Weather (i.e., heavy snow loads).
- All critical facilities are potentially vulnerable to Earthquake, High Winds, and Severe Weather (heavy rains in summer and snow loads in winter).
- Several critical facilities are potentially vulnerable to Flood and Wildfire and will be identified as priorities for follow-up critical facility field evaluations.
- Priority for follow-up should also be focused on critical facilities housing vulnerable populations related to Extreme Temperature and Severe Weather hazards. For example, determining and documenting (cross referencing EOP) how residents will be moved to facilities providing shelter including cooling and warming centers (all of which would need adequate back-up power and hardening).

²⁹ All supporting data for SVI can be viewed at https://docs.google.com/spreadsheets/d/10zb_Qlg2CgGxb45_fcKiP46swaC16-fORxYTIOiAKP0/edit#gid=1481479799

Part 3: Hazard Identification and Risk Assessment

Part 3.7: Hazard Priorities [review / confirm or revise highlighted entries]

As a key step in the Hazard Identification and Risk Assessment (HIRA) process, the twelve (12) natural hazards identified in the CC HMPU Base Plan were discussed during the Municipal Working Group Work Sessions and the relative priority of these hazards was identified.

Based on their personal experience as well as the results of the HIRA, the Municipal Working Group rated the hazards as follows:

High Priority

- High Wind

Moderate Priority

- Earthquake
- Severe Weather – Winter

Low Priority

- Coastal Erosion and Sea Level Rise
- Dam Failure³⁰
- Drought
- Extreme Temperature: Cold & Hot
- Flood
- Severe Weather – Summer

Three additional hazards were considered but were not considered applicable to the municipality:

- Geologic Hazards
- Levee Failure
- Wildfire

³⁰ As noted in Section 3, NJ DEP Division of Dam Safety and Flood Control records indicate three (3) high hazard dams in Bridgeton City. However, recent and ongoing repairs and renovations will result in changes in classifications and an overall reduction of risk for the city.

Part 4: Mitigation Measures

Part 4: Mitigation Measures

Part 4 includes six subparts:

- *Part 4.1: Mitigation Goals and Strategy*
- *Part 4.2: NJ4 HMP Mitigation Measures*
- *Part 4.3: Municipal Mitigation Measures – Identification*
- *Part 4.4: Municipal Mitigation Measures – Implementation*
- *Part 4.5: Multi-Jurisdictional Mitigation Measures*
- *Part 4.6: Authorities, Policies, Programs, Resources, and Plan Integration*

Part 4.1: Mitigation Goals and Strategy [review / confirm or revise highlighted entries]

Goals were originally established by the SDVR Hazard Mitigation Steering Committee and validated by the four County Hazard Mitigation Working Groups in response to risk and capability assessment results.

As part of the NJ4 HMP plan update process, these goals were reviewed and edited by the Municipal Working Groups for use in the Municipal Appendices. In addition, the Municipal Working Groups for the CC HMPU reviewed and [reaffirmed/edited] these goals for continued use in the Appendices.

All mitigation measures in the Municipal Appendix are related to at least one of these four goal statements.

- **Goal 1: Improve education and outreach efforts** regarding potential risk of natural hazards and appropriate mitigation measures that can be used to reduce risk (including programs, activities, and projects)
- **Goal 2: Improve data collection, use, and sharing** to reduce the risk of natural hazards
- **Goal 3: Improve capabilities and coordination** at municipal, county, and state levels to plan and implement hazard mitigation measures
- **Goal 4: Plan and implement projects** to mitigate identified natural hazards, known problems, and areas of concern

Based on these goals, the results of the HIRA, and experience of participants in the plan update process, the Municipal Working Group identified an overarching strategy for mitigation:

- Identify and address known problems or areas of concern for critical facilities and vulnerable populations
- Provide opportunities for residents and property owners to access available information about risk reduction and mitigation measures, in particular for Repetitive Flood Loss properties
- Institutionalize hazard mitigation into municipal activities and programs through regular interactions of the Municipal Working Group and integration of related regulatory programs and planning initiatives
- Stay informed regarding changing conditions and related improvements in hazard and risk data due to future natural hazard events and increasing understanding of the effects of climate change and use the information as part of periodic evaluations of and refinements or additions to the municipality's mitigation program

The mitigation measures [to be] described in Parts 4.3 through 4.5 of the Municipal Appendix reflect this strategy.

Part 4: Mitigation Measures

Part 4.2: NJ4 HMP Mitigation Measures

Known problems and areas of concern were the basis for mitigation measures identified in the NJ4 HMP. In cases where these problems and concerns still exist at the time of the CC HMPU, the related NJ4 HMP mitigation measures **will be** candidates for inclusion in the Municipal Appendix.

Table 2-9 identifies the status of mitigation measures included in the NJ4 HMP. These entries were based on information provided by the Municipal Working Group. In some cases, the NJ4 HMP mitigation measures **will be** carried over as part of the Municipal Appendix as **will be** indicated in the “Comments” column and the far right-hand column of Table 2-9.

In addition to reviewing all entries for accuracy, need to provide confirmation and/or information for all highlighted entries.

Table 2-9: Status of Bridgeton City NJ4 HMP Mitigation Measures

Mitigation Action, Program, or Project	Status	Comments	Mitigation Measure # <small>3132</small>
M-1: Identify and pursue outreach and education opportunities to inform municipal residents, businesses, and property owners.	Work-in-progress	Work-in-progress included [identify any work-in-progress for these three mitigation measures, e.g., use of City website for emergency or hazard information dissemination, follow-up with facilities regarding projects, informal discussions among City officials, etc.]	To be carried over as part of M-1
M-2: Prioritize critical facilities and complete site and facility surveys to identify vulnerabilities and potential mitigation measures.			
M-3: Prioritize recurrent drainage problem areas and initiate data collection to track unreimbursed damages and related response and recovery expenses.			
M-4: Conduct regular Municipal Working Group meetings.			
M-5: Install backup emergency power generator at Bridgeton City Hall Annex (CF-2).	No progress, lack of funding	Back-up emergency power used to be provided (to some degree) by link with City Hall but link is no longer in operation.	To be carried over as # TBD
M-6: Install backup emergency power generator at Bridgeton City Public Works Garage (CF-7).	No progress, lack of funding		To be carried over as # TBD
M-7: Install backup emergency power generator at Bridgeton City Water Department (CF-8).	[identify status]		To be carried over as # TBD

³¹ Detailed information for identification and implementation of municipal (M-#) mitigation measures **will be included** in Tables 2-10 and 8-11.

³² Detailed information for identification and implementation of multi-jurisdictional (MJ-#) mitigation measures **will be included** in Table 2-12.

Part 4: Mitigation Measures

Mitigation Action, Program, or Project	Status	Comments	Mitigation Measure # 3132
M-8: Install backup emergency power generator at Well #s 2 & 24 (CF-12).	Work-in-progress	[identify nature of "work-in-progress" including responsible party(ies), anticipated completion date, and funding source]	To be carried over as [# TBD]
M-9: Install backup emergency power generator at Well # 13 (CF-13).	[identify status]		To be carried over as [# TBD]
M-10: Install backup emergency power generator at Well #s 18 & 22 (CF-14).	[identify status]		To be carried over as [# TBD]
M-11: Install backup emergency power generator at Well #s 19, 20, & 23 (CF-15).	[identify status]		To be carried over as [# TBD]
M-12: Install backup emergency power generator at Well # 21 (CF-16).	[identify status]		To be carried over as [# TBD]
M-13: Upgrade backup emergency power generator at Bridgeton Senior High School (CF-36).	[identify status]		To be carried over as [# TBD]
M-14: Install backup emergency power generator at Broad Street School (CF-35).	[identify status]		To be carried over as [# TBD]
M-15: Install backup emergency power generator at Buckshutem Road Elementary School (shelter) (CF-34).	[identify status]		To be carried over as [# TBD]
M-16: Harden School Board Offices to address roof structure resilience (CF-28).	[identify status]		To be carried over as [# TBD]
M-17: Harden Bridgeton Schools Warehouse and Bus Maintenance Facility (shelter) to address roof structure resilience (CF-29).	[identify status]		To be carried over as [# TBD]
M-18: Drainage improvements to the "Raceway" that protects the city from flooding from Sunset Lake.	Completed	[identify completion date, responsible party(ies, and funding source (e.g., grant program)]	
M-19: Install Cohansey River Bulkhead ³³ .	[identify status]		To be carried over as [# TBD]
M-20: Purchase Jet-Vac Truck and three (3) portable trash pumps.	Completed	[identify completion date, responsible party(ies, and funding source]	

³³ The project consists of 1,375 feet of sheet piling on the west side of the Cohansey River starting north of Commerce Street and continuing 300 feet past the Washington Street Bridge.

Part 4: Mitigation Measures

Mitigation Action, Program, or Project	Status	Comments	Mitigation Measure # 3132
M-21: Address identified Repetitive Flood Loss Properties.	[identify status]		To be carried over as [# TBD pending receipt of information from FEMA RII]
MJ-1: Sunset Lake Dam. ³⁴ .	[identify status]		To be carried over as multi-jurisdictional mitigation measure [# TBD]

³⁴ Problem involves needed improvements to the East and West Gate structures. As of October 2, 2014, repairs to the East Gate structure and related sheet piling installations were on-going as part of improvements to the Raceway. However, the West Gate is not part of the current project.

Part 4: Mitigation Measures

Part 4.3: Municipal Mitigation Measures – Identification

Table 2-10 **[will include]** the list of mitigation measures that are considered the responsibility of the municipality. These mitigation measures:

- Reflect the goals and strategy identified in Part 4.1
- Include projects carried over from NJ4 HMP as detailed in Part 4.2
- Include new projects, programs or activities identified by the Municipal Working Groups including measures to address known problems or areas of concern for critical facilities and vulnerable populations
- Address Repetitive Flood Loss (RL) and Severe Repetitive Flood Loss Properties (SRL)³⁵ if applicable

Table 2-10 **[will include]**:

- Brief description of the mitigation action, program, or project
- Hazard(s) addressed by the measure
- Relevant goal(s) addressed by the measure
- Whether the measure pertains to existing or new structures or both

Note: Mitigation measures with discrete locations **[will be]** shown in Figure 2-7.

Table 2-10: Bridgeton City Municipal Mitigation Measures Identification

#	Mitigation Action, Program, or Project	Hazard(s)	Goal (s)	Existing or New Structures
M-1	<p><u>Municipal Mitigation Program</u> – including sustained efforts in cooperation with Cumberland County Office of Emergency Management (CC OEM) to:</p> <ul style="list-style-type: none"> ▪ Conduct outreach and education for residents, businesses, and property owners ▪ Complete critical facility field evaluations to identify potential vulnerabilities and mitigation measures ▪ Compile relevant data regarding hazard impacts ▪ Support regular interactions of the Municipal Working Group ▪ Seek integration of hazard mitigation with other parallel planning initiatives 	All	All	All

³⁵ Section 3: Hazard Identification and Risk Assessment of the CC HMPU Base Plan **[will include]** a description of RL and SRL properties.

Part 4: Mitigation Measures

Part 4.4: Municipal Mitigation Measures – Implementation

Table 2-11 [will include] information identified by the Municipal Working Group:

- Part(ies) responsible for following up with implementation of the measure
- Priority for implementation considering a range of criteria³⁶
- Project Type to help determine funding options and implementation mechanisms at the municipal level³⁷
- Estimated Cost, including estimates provided by the Municipal Working Group or approximate ranges for projects that are in early stages of development
- Target Date, indicating desired completion dates assuming availability of funding
- Next step(s) anticipated to implement the identified mitigation measures at the municipal level

Table 2-11: Bridgeton City Municipal Mitigation Measures Implementation

#	Mitigation Action, Program, or Project	Responsible Part(ies)	Priority	Project Type	Estimated Cost (\$)	Target Date	Next Step(s)
M-1	Municipal Mitigation Program	Office of Emergency Management	High	Program	Staff Time	On-going, sustained effort	<ul style="list-style-type: none"> ▪ Identify outreach and education objectives and methods (working with CC OEM) ▪ Set priorities (if necessary) and initiate critical facility field assessments ▪ Identify schedule for plan updates (for plan integration efforts)

³⁶ Section 4: Mitigation Measures of the CC HMPU Base Plan [will include] a description of evaluation criteria considered by the Municipal Working Group.

³⁷ Section 4: Mitigation Measures of the CC HMPU Base Plan [will include] a description of project types and related information regarding funding options and implementation mechanisms.

Part 4: Mitigation Measures

Part 4.5: Multi-Jurisdictional Mitigation Measures

During the Municipal Working Group Work Sessions, the Municipal Working Group [will identify] some NJ4 HMP mitigation measures that need to be carried over, as well as new areas of concern, as mitigation measures where implementation requires participation or leadership from other levels of government, including county, state, and federal agencies. These multi-jurisdictional mitigation measures [will be] included in Table 2-12.

Section 4: *Mitigation Measures* of the CC HMPU Base Plan [will describe] multi-jurisdictional implementation strategies in detail. Section 4 [will identify] multi-jurisdictional mitigation measures that Municipal Working Groups believe are partly or wholly the responsibility of County agencies. These measures [will be] referred to the County Working Group for consideration. As part of the mitigation measures in the County Appendix to the NJ4 HMP Regional Hazard Mitigation Plan, the County Working Group will be working with the municipalities to identify:

- Specific responsibilities amongst different level(s) of government to address these problem areas
- Mitigation measures or related projects which may address the described problem areas that are already acknowledged as County responsibilities including identifying the appropriate County agency or department taking the lead role and status of implementing these mitigation measures
- Which, if any, additional mitigation measures the member agencies of the County Working Group will assume responsibility to implement

Note: Multi-jurisdictional mitigation measures with discrete locations [will be] shown in Figure 2-7.

Table 2-12: Bridgeton City Multi-Jurisdictional Mitigation Measures

#	Problem Description	Hazard(s) Addressed	Goal Addressed	Applies to Existing or New Structures	Potential Partners	Priority

Figure 2-7: Bridgeton City Mitigation Project Locations

Preliminary Draft

Part 4: Mitigation Measures

Part 4.6: Authorities, Policies, Programs, Resources, and Plan Integration

Part 4.6 includes three (3) subparts:

- Authorities, Policies, and Programs - Cross referencing relevant information and recommendations in the CC HMPU Base Plan regarding existing authorities, policies, and programs in the region and specific information about the jurisdiction's participation and continued compliance in the National Flood Insurance Program (NFIP)
- Capabilities and Coordination - Cross referencing relevant information and recommendations in the CC HMPU Base Plan regarding improving capabilities and coordination at the municipal level and specific information about the jurisdiction's available resources
- Plan Review and Integration – Identifying plans and programs included in the development of Plan Integration recommendations in the CC HMPU Base Plan

Authorities, Policies, and Programs

Section 1.3: Existing Authorities, Policies, Programs, and Resources of the CC HMPU Base Plan **will summarize** relevant authorities, policies, and programs related to hazard mitigation in the County including the NFIP.

Continuing municipal participation in the NFIP as part of the implementation of the CC HMPU by the municipality, includes:

- Involvement of Floodplain Manager / Administrator during the CC HMPU implementation process
- Commitment to adopt updated FIRMs and evaluate / update the municipality's Flood Management Plan and/or Ordinance as appropriate per recommendations **to be included** in Section 4.6 of the CC HMPU Base Plan

Capabilities and Coordination

The update of the NJ4 HMP **will include** reexamining municipal hazard mitigation capabilities; potential for improving capabilities and coordination within and between jurisdictions; and plan integration considerations, including:

- *Section 1.3: Existing Authorities, Policies, Programs, and Resources* of the CC HMPU Base Plan **will include** summary statements regarding county and municipal resources and the impact of resource limitations on the overall approach to the CC HMPU mitigation strategies.
- *Section 4: Mitigation Measures* of the CC HMPU Base Plan **will include** summary observations and recommendations concerning:
 - Hazard mitigation planning and mitigation measure implementation capabilities and coordination at the county and municipal levels
 - Coordination within municipal governments, between municipal governments and their communities, and between municipal, county, and state agencies responsible for hazard mitigation

Part 4: Mitigation Measures

Plan Review and Integration

Specific documents obtained during the plan update process from the Municipal Working Group include:

- Emergency Operations Plan (2018) [confirm update is scheduled in 2021]
- Floodplain Management Ordinance
- Master Plan (2008)³⁸
- Land Development Applications and Checklists³⁹
- Zoning Ordinance
- 2014 Capital Improvement Budget and Capital Improvement Program

Need to identify for highlighted entries:

- ✓ Current status of all plans?
- ✓ For plans that have been “updated”, when was the update completed?
- ✓ For plans where “no update” has occurred, is an updated scheduled, and if so, when and who is the responsible party?

Table BP.4-4 in *Section 4.6: Plan Review and Integration* of the CC HMPU Base Plan:

- [Will identify] the primary plans and documents collected from each of the participating municipalities.
- [Will include] the results of reviewing the primary plans and documents to determine the extent to which these documents reflect up-to-date hazard risk and mitigation.
- [Will include] recommendations for integrating the results of the CC HMPU, including hazard mitigation data, goals, measures, and/or recommendations with existing plans and programs at the municipal level that are relevant to all participating municipalities and incorporated by reference in each of the jurisdiction-specific Appendices including:
 - Hazard Assessments
 - Emergency Operations Plans
 - Floodplain Management Ordinances
 - Master Plans and Reexamination Reports
 - Other plans and documents

The plan maintenance process [will articulate and specify] a commitment to review and follow these recommendations during future scheduled updates of these various documents as considered appropriate by the Working Group and the governing body of the municipality.

³⁸ <http://www.cityofbridgeton.com/masterplan.php>

³⁹ <http://www.cityofbridgeton.com/planningzoning.php>

Attachment A: Public Review Comments

Public review comments [will be] recorded during the public review of the Bridgeton City Preliminary Draft and Draft versions of the Municipal Appendix on [dates to be determined]:

Table 2.A-1: Public Review Comments

Comment Date and Time	Comment	Response

Preliminary Draft

Attachment B: Adoption Resolution

Following this page [will be] the Adoption Resolution for the Bridgeton City Municipal Appendix as approved by the Bridgeton City Council.

Preliminary Draft

Attachment C: Approval Letter

Following this page [will be] the Approval Letter for the Bridgeton City Municipal Appendix.

Preliminary Draft