



Cumberland County Multi-Hazard Mitigation Plan Update
Participating Jurisdiction Appendices

Appendix 3
Commercial Township, New Jersey

Preliminary Draft

September 7, 2021

Notes to Preliminary Draft Reviewers

This Preliminary Draft of the Commercial Township Appendix to the Cumberland County Multi-Hazard Mitigation Plan Update (CC HMPU) includes:

Updated tables containing information available as of September 7th for the community's:

- Working Group
- Critical Facilities
- Mitigation Measures included in the 2016 Mitigation Plan for Four New Jersey Counties (NJ4 HMP)
- Plan Review and Integration document status

In addition, the Preliminary Draft contains:

- Preliminary Hazard Identification and Risk Assessment (HIRA) Update – including mapping and data tabulations regarding vulnerability to natural hazards and social vulnerability considerations
- Hazard Priorities – as determined by the Working Group
- Goals and Strategies

Finally, the Preliminary Draft includes initial lists of proposed Municipal and Multi-Jurisdictional Mitigation Measures to be included in the CC HMPU.

Text highlighted in **yellow** indicates information requested of the community's Working Group as part of this review.

Text highlighted in **blue** indicates information to be provided and/or actions to be taken at a later date.

Please provide any questions, input, or comments to your community's Emergency Management Coordinator:

Fred Hundt

hundtfirerescue@comcast.net

This review period will close on Friday, October 1st. However, there will be additional opportunities to participate in the development of the CC HMPU. These opportunities will be identified on the project website (<https://cchmpu21.com>).

Table of Contents

Table of Contents	3-i
Part 1 Overview	3-1
1.1: Cumberland County Multi-Hazard Mitigation Plan Update	3-1
1.2: Commercial Township Municipal Appendix	3-1
Part 2 Participation	3-2
2.1: Municipal Working Group Participation	3-2
2.2: Public Participation	3-5
Part 3 Hazard Identification and Risk Assessment	3-6
3.1: Profile	3-6
3.2: General Building Stock	3-8
3.3: Critical Facilities	3-9
3.4: Hazard Exposure Assessment	3-11
3.5: Demographic Considerations	3-14
3.6: Observations	3-15
3.7: Hazard Priorities	3-16
Part 4 Mitigation Measures	3-17
4.1: Mitigation Goals and Strategy	3-17
4.2: NJ4 HMP Mitigation Measures	3-18
4.3: Municipal Mitigation Measures – Identification	3-21
4.4: Municipal Mitigation Measures – Implementation	3-22
4.5: Multi-Jurisdictional Mitigation Measures	3-23
4.6: Authorities, Policies, Programs, Resources, and Plan Integration	3-25

Table of Contents

List of Figures

Figure 3-1: Commercial Township Location Map	3-6
Figure 3-2: Commercial Township Base Map	3-7
Figure 3-3: Commercial Township Building Footprints	3-8
Figure 3-4: Commercial Township Critical Facilities	3-11
Figure 3-5: Commercial Township Critical Facilities & 1% Annual Chance Flood Zone	3-12
Figure 3-6: Commercial Township Social Vulnerability Index: Overall Scores	3-14
Figure 3-7: Commercial Township Mitigation Project Locations	3-24

List of Tables

Table 3-1: Commercial Township Working Group	3-2
Table 3-2: Public Participation	3-5
Table 3-3: Commercial Township Buildings per Land Use Type	3-8
Table 3-4: Commercial Township Critical Facilities Inventory	3-9
Table 3-5: Commercial Township General Building Stock Hazard Exposure	3-13
Table 3-6: Commercial Township Critical Facilities Hazard Exposure	3-13
Table 3-7: Commercial Township General Population Demographics	3-14
Table 3-8: Commercial Township Social Vulnerability Considerations	3-15
Table 3-9: Status of Commercial Township NJ4 HMP Mitigation Measures	3-18
Table 3-10: Commercial Township Municipal Mitigation Measures Identification	3-21
Table 3-11: Commercial Township Municipal Mitigation Measures Implementation	3-22
Table 3-12: Commercial Township Multi-Jurisdictional Mitigation Measures	3-23

Attachments

Attachment 3.A: Public Review Comments	3.A-1
Attachment 3.B: Adoption Resolution	3.B-1
Attachment 3.C: Approval Letter	3.C-1

Part 1: Overview

Part 1.1: Cumberland County Multi-Hazard Mitigation Plan Update

The Cumberland County Multi-Hazard Mitigation Plan Update (CC HMPU) incorporates input from all 15 participating jurisdictions in Cumberland County, including Cumberland County and 14 separate municipalities.

The CC HMPU is an update of the Mitigation Plan for Four New Jersey Counties (NJ4 HMP) that was completed by all fifteen jurisdictions in Cumberland County along with over 70 additional jurisdictions from Camden, Gloucester, and Salem Counties. The Cumberland County portions of the NJ4 HMP were adopted by the participating jurisdictions and approved by the Federal Emergency Management Agency in 2016.

The CC HMPU has two main parts:

- Cumberland County Multi-Hazard Mitigation Plan Update, or the “Base Plan”.
- County and Municipal Appendices.

The Base Plan **will include** descriptions and information that is common to all 15 participating jurisdictions organized according to the following three focus areas:

- Planning Process
- Hazard Identification and Risk Assessment
- Mitigation Measures

The County and Municipal Appendices include specific information for these same three focus areas for each of the 15 participating jurisdictions. Detailed tabulations are included in these Municipal Appendices for critical facilities, the status of past mitigation activities, and proposed mitigation measures for each municipality.

Part 1.2: Commercial Township Municipal Appendix

This Municipal Appendix is focused on Commercial Township in Cumberland County, New Jersey.

The Commercial Township Municipal Working Group **will recommend** the Commercial Township Municipal Appendix for adoption to the Commercial Township Committee.

The Commercial Township Committee **will adopt** the Municipal Appendix by resolution (see Attachment B: Adoption Resolution).

Region II of the Federal Emergency Management Agency **will approve** the Municipal Appendix (see Attachment C: Approval Letter).

Part 2: Participation

Part 2.1: Municipal Working Group Participation

Part 2.1 includes:

- *Municipal Working Group members including positions in the community, meetings and work sessions attended, and specific contributions to the Municipal Appendix*
- *Municipal positions and organizations that were invited but were not able to participate in the plan update process*
- *Municipal positions and organizations that have been recommended by the Federal Emergency Management Agency (FEMA) as candidates for participation on Municipal Working Groups but do not exist in the municipality*

Table 3-1 identifies the Municipal Working Group members. As [will be] detailed in *Section 2: Planning Process* of the Base Plan, the Municipal Working Groups are comprised of community representatives who worked to make sure mitigation measures included in the Municipal Appendix addressed the risks faced by residents, businesses, and property owners and reflected the priorities of the community.

Municipal Working Group members reviewed briefing materials and contributed during Work Sessions and Meetings and [will review] the Preliminary Draft and Draft versions of the CC HMPU Base Plan and Appendices. The Working Group will also continue to stay involved during the implementation and maintenance of the CC HMPU.

Due to the on-going COVID-19 pandemic during the plan update process, Working Group meetings were conducted in a variety of ways including virtual meetings. However, when local conditions permitted, in-person meetings were conducted.

Note: Nine members of the Working Group also participated in the development of the 2016 NJ4 HMP. These members are indicated with an () following their last names.*

Table 3-1: Commercial Township Working Group

First Name	Last Name	Department	Position	Project Kick-off Meeting ¹	Round 1 Work Session ²	Round 2 Work Session ³	Working Group Meeting ⁴	Contribution ⁵
Frederick	Hundt *	Office of Emergency Management (OEM)	OEM Coordinator	<input checked="" type="checkbox"/>	<input checked="" type="checkbox"/>			Organized Working Group and Work Sessions.
Michael	Rodgers, Sr. *	OEM	Deputy Coordinator		<input checked="" type="checkbox"/>			
Robert	Welch	OEM	Deputy Coordinator					
Michael	Vizzard	Executive Committee	Mayor		<input checked="" type="checkbox"/>			
Fletcher	Jamison	Executive Committee	Committeeman					

¹ Project Kickoff Meeting was held on May 20, 2021.

² Round 1 Work Session was held on August 19, 2021.

³ Round 2 Work Session [will be] held on [to be determined].

⁴ Working Group Meeting [will be] held on [to be determined (if applicable)].

⁵ Additional or unusual contributions are noted in the far-right hand column.

Part 2: Participation

First Name	Last Name	Department	Position	Project Kick-off Meeting ¹	Round 1 Work Session ²	Round 2 Work Session ³	Working Group Meeting ⁴	Contribution ⁵
Dean	Berry *	Land Use Board	Board Member					
John	Nardone	Environmental Commission	Chairman					
Ronald	Sutton, Jr. *	School Board	Vice-President					
William	White	Construction	Construction Official / Floodplain Administrator					
Nick	Dicosmo	Engineering	Township Engineer					
Clint	Miller *	Public Works	Public Works Supervisor					
Donald	Hundt *	Mauricetown Fire Company	Fire Chief					
Scott	Eves	Bayshore Center	Facilities Manager					
Barney	Hollinger *	Marina	Marina Owner / Commercial Fishery					
James	D'Ambrosio Jr. *	U.S. Silica Co. / Laurel Lake Volunteer Fire and Rescue / Board of Fire Commissioners	Liaison / Administrator / Board Member / Board Member		<input checked="" type="checkbox"/>			
John	Hoffman *	Hoffman Funeral Homes / Port Norris Fire Company	Owner / Firefighter					

Part 2: Participation

The following lists candidate positions and organizations within the community that were extended invitations but could not participate during the development of the Municipal Appendix. These positions and organizations will continue to be extended invitations to participate during subsequent plan implementation and maintenance activities.⁶

- [to be completed pending Working Group participation throughout the plan update process]

The following lists positions and organizations that are generally recommended for consideration as members of the Municipal Working Groups by FEMA but do not currently exist within the community. An invitation to participate will be extended if positions are created or filled and as organizations are formed.

- GIS / IT Specialist
- Transportation Department Directors / Supervisors
- Police
- Critical Infrastructure and Key Resources
- Healthcare Institutions

⁶ Plan implementation and maintenance activities [will be] described in *Section 4: Mitigation Measures* of the CC HMPU Base Plan.

Part 2: Participation

Part 2.2: Public Participation

Part 2.2 **[will include]** all opportunities provided to the public and interested parties in the municipality to participate during the plan update process.

Table 3-2 **[will identify]** the date, type of involvement, and location (where applicable) for all opportunities provided to the public and interested parties to participate in the development of the plan update.

Table 3-2: Public Participation

Date	Type of Involvement	Location
[insert date link was established]	Link to Project Website ⁷ established and maintained.	[insert municipal website URL]
[insert date meeting was held (if applicable)]	Public meeting conducted with presentation and open discussion.	[insert location]
September 8, 2021	Preliminary Municipal Appendix available for public comment.	Project Website
[insert date link was established]	Notice posted re: Preliminary Municipal Appendix review period with link to Project Website.	[insert municipal website URL]
[date(s) to be determined]	Public outreach via [insert audience(s) and outreach method(s)] .	[insert location(s)]
[date to be determined]	Draft Municipal Appendix [will be] available for public comment.	Project Website
[date to be determined]	Public hearing [will be] conducted regarding the Draft Municipal Appendix providing for open discussion and public comment.	[insert location]

Public comments and input received for the Preliminary Draft and Draft versions of the Municipal Appendix **[will be]**:

- Considered by the Municipal Working Group and **[will be]** incorporated into the Municipal Appendix where appropriate.
- Included in Attachment A to the Municipal Appendix along with a brief explanation of if and how the comments were addressed in the Municipal Appendix.

In addition, the Municipal Appendix **[will be]** adopted as part of a regularly scheduled public meeting (see Attachment B: Adoption Resolution).

Public education and outreach is an on-going mitigation measure included in the Municipal Appendix.⁸ In addition, public participation will continue to be encouraged during subsequent plan implementation and maintenance activities.⁹

⁷ <https://cchmpu21.com/documents>

⁸ See Mitigation Measure M-1 in Part 4 of the Municipal Appendix.

⁹ Public education and outreach **[will be]** described in *Section 4: Mitigation Measures* of the CC HMPU Base Plan.

Part 2: Participation

Part 3: Hazard Identification and Risk Assessment

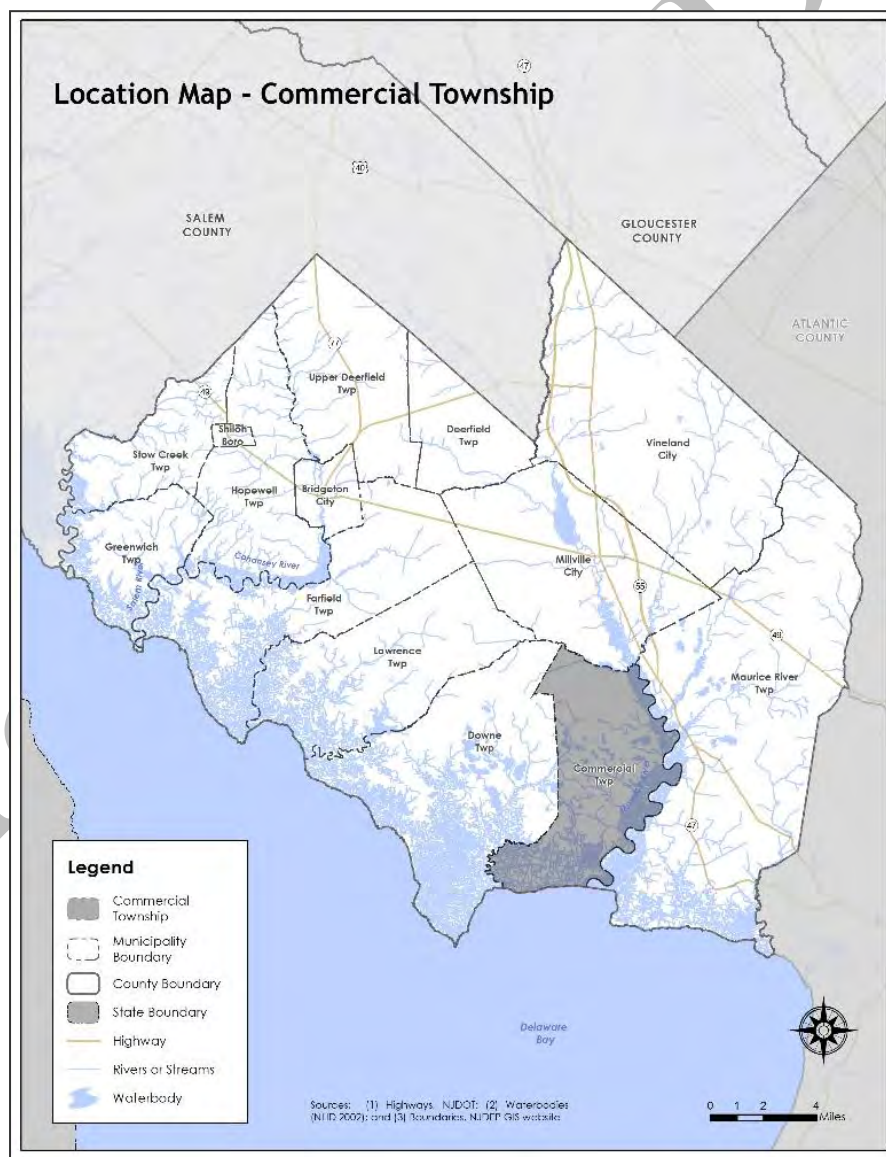
Part 3 includes seven subparts:

- Part 3.1: Profile
- Part 3.2: General Building Stock
- Part 3.3: Critical Facilities
- Part 3.4: Hazard Exposure Assessment
- Part 3.5: Demographic Considerations
- Part 3.6: Observations
- Part 3.7: Hazard Priorities

Part 3.1: Municipal Profile

Commercial Township is located in the southern edge of Cumberland County (See Figure 3-1).

Figure 3-1: Commercial Township Location Map



Part 2: Participation

Part 3.2: General Building Stock

As of 2015, there are 2,911 buildings in Commercial Township with a total assessed value of improvements of \$247,655,080. Figure 3-3 shows the footprints of these buildings.

Figure 3-3: Commercial Township Building Footprints¹⁰

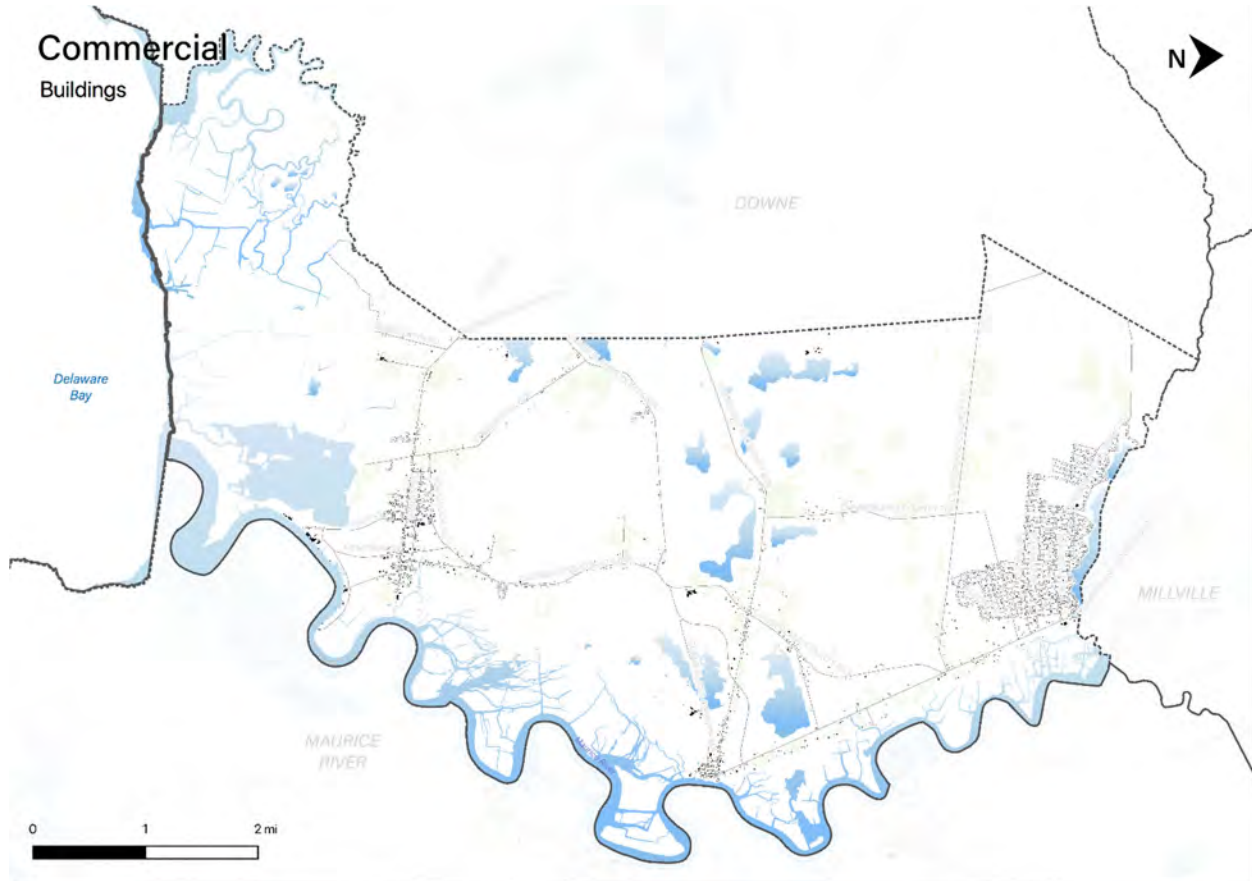


Table 3-3 [will show] the distribution of these structures according to land use distinctions.

Table 3-3: Commercial Township Buildings per Land Use Type¹¹

Land Use Type	Number of Buildings
Residential	[TBD]
Commercial	[TBD]
Industrial	[TBD]

¹⁰ Building footprint data was isolated from “Impervious Surfaces” data (2015) per <https://gisdata-njdep.opendata.arcgis.com/>. Note: This (map/publication/report) was developed using New Jersey Department of Environmental Protection Geographic Information System digital data, but this secondary product has not been verified by NJDEP and is not state-authorized or endorsed.

¹¹ Land use types [will be] isolated from MOD-IV Parcels and Tax Assessor data composite (2021) per <https://njogis-newjersey.opendata.arcgis.com/documents/parcels-and-mod-iv-of-cumberland-county-nj-shp-download/about> from the New Jersey Office of GIS

Part 2: Participation

Part 3.3: Critical Facilities¹²

As of August 2021, there are twelve critical facilities in Commercial Township.

Critical facilities are prime candidates for mitigation measures due to important functions staged from these facilities prior to, during, and after natural hazards including emergency services and housing vulnerable populations.

Table 3-4 includes current inventory information for municipal critical facilities **and will include** cross-references to related mitigation measures **to be** identified in Part 4 of the Municipal Appendix. Figure 3.4 shows the location of these critical facilities.

In addition to reviewing all entries for accuracy, need to provide confirmation and/or information for all highlighted entries.

Table 3-4: Commercial Township Critical Facilities Inventory

CF #	Name	Type	Sub-Type	Address	Co-located CF #	Shelter (Y/N)	Generator (Y/N)	Comments	Mitigation Measure #
CF-1	Township Hall	Municipal	Administrative Offices	1768 Main Street, Port Norris		N	Y		[TBD]
CF-2	Emergency Operations Center	EOC	Co-located Facilities	9544 Noble Street, Mauricetown		N	Y		[TBD]
CF-3	Mauricetown Fire Company	FireStation	Stations	9544 Noble Street, Mauricetown		N	Y		[TBD]
CF-4	Laurel Lakes Volunteer Fire and Rescue Inc.	FireStation/EMS	Stations	5436 Battle Lane, Millville		Y ¹³	Y		[TBD]
CF-5	Port Norris Fire Company	FireStation/EMS	Stations	6858 Brown Street, Port Norris		N	Y		[TBD]

¹² Critical facility definitions and considerations **will be** described in *Section 3: Hazard Identification and Risk Assessment* of the CC HMPU Base Plan.

¹³ Not Red Cross certified shelter (no dedicated kitchen staff full-time) – used as warming / cooling center

Part 2: Participation

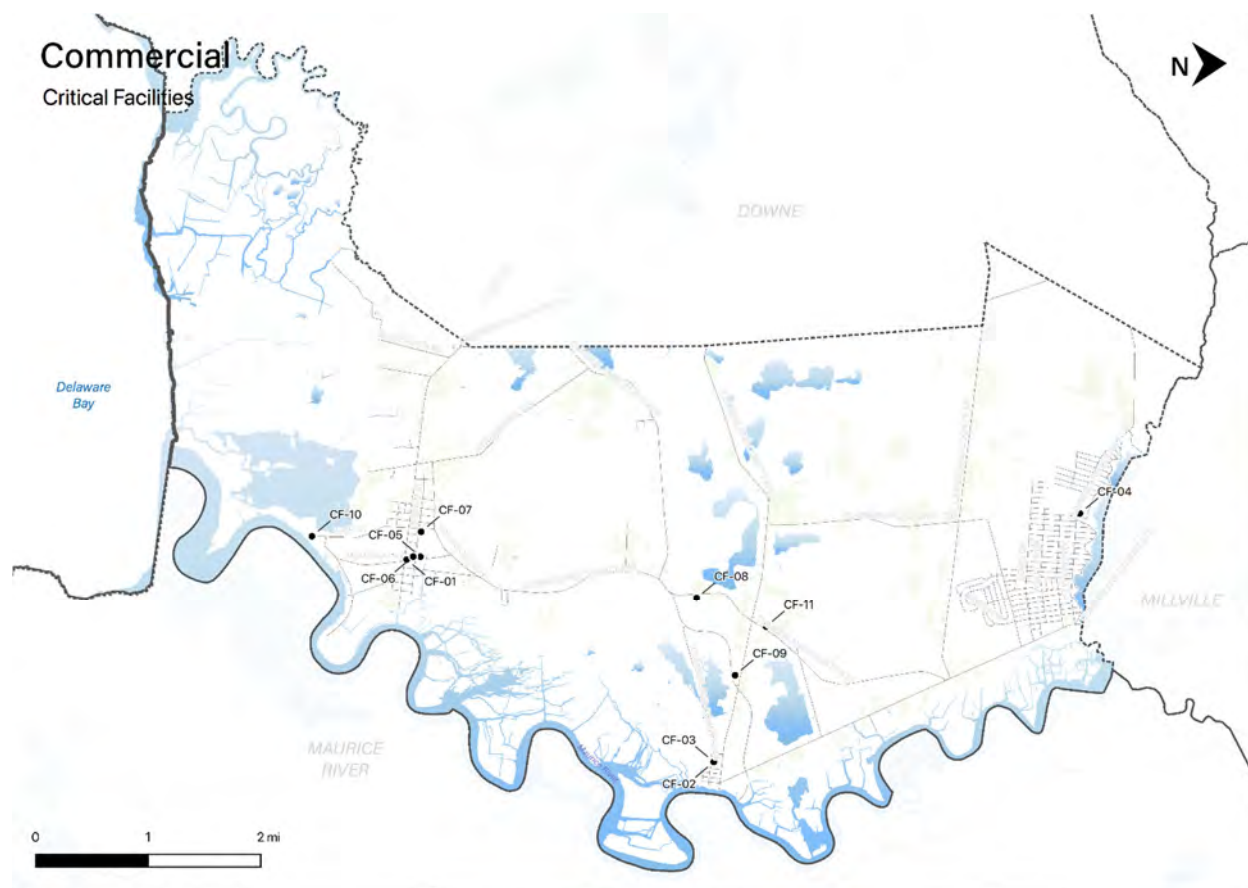
CF #	Name	Type	Sub-Type	Address	Co-located CF #	Shelter (Y/N)	Generator (Y/N)	Comments	Mitigation Measure #
CF-6	Public Works	Public Works	Combined Administrative Office, Maintenance / Work Area, Equipment / Material Storage, and Fueling Station	1768 Main Street, Port Norris		N	Y		[TBD]
CF-7	Haleyville-Mauricetown Elementary School	Schools	Public Schools	1308 North Avenue / P.O. Box 650, Port Norris		Y ¹⁴	Y		[TBD]
CF-8	Louise E. Moore Senior Center	Vulnerable Populations Facilities	Senior Centers	8879 Highland Street, Haleyville		Y ¹⁵	Y		[TBD]
CF-9	Bayshore Center at Bivalve	Emergency Staging Areas	Evacuation	2800 High Street, Port Norris		Y ⁷	N		[TBD]
CF-10	Community Center	Other Municipal	Community Center	1061 Steep Run Road, Millville		Y ⁷	N		[TBD]
CF-11	Holy Manor Health Care Facility	Vulnerable Populations	[identify subtype, i.e., assisted living, senior day care, etc.]	2408 High Street, Port Norris				[identify shelter capacity / intentions, if there is a generator, and if so, if it is adequate to operation all necessary functions]	[TBD]
CF-12	Adams House Assisted Living Facility	Vulnerable Populations	Private Assisted Living	6416 Brown Street, Port Norris				[same as CF-11]	[TBD]

¹⁴ Not ARC certified but ARC will come and open.

¹⁵ Warming / cooling center.

Part 3: Hazard Identification and Risk Assessment

Figure 3-4: Commercial Township Critical Facilities



Note: All mapping corresponding to results described in Parts 3.3 through 3.5 can be viewed in .pdf format at: <https://www.dropbox.com/sh/4sydpqcc4l7do0f/AAD2cCALO8B21-kXPTOu7EQZa?dl=0>

Part 3.4: Hazard Exposure Assessment

Hazard exposure assessments [will be completed] for the twelve (12) natural hazards identified in the CC HMPU Base Plan¹⁶.

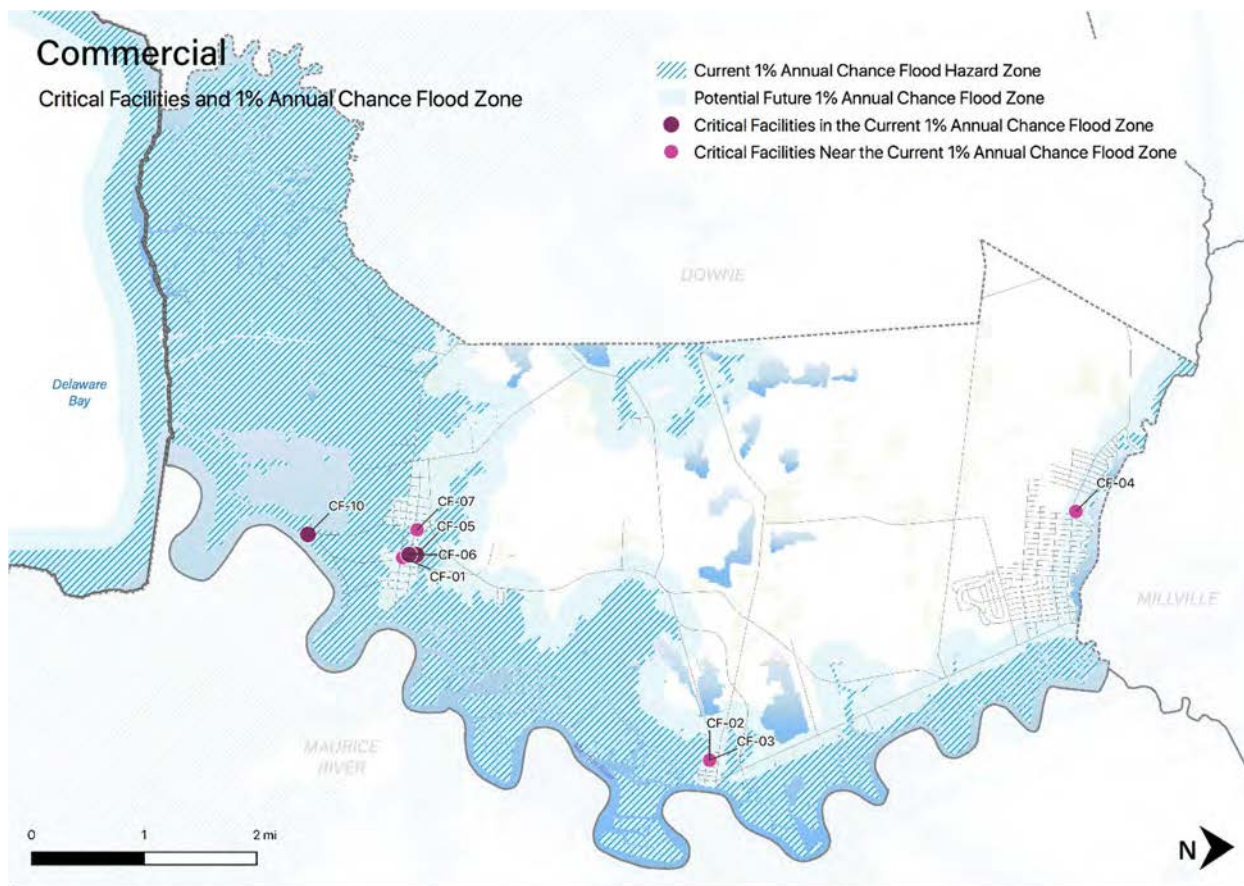
Key results for Commercial Township are depicted in the following.

Mapping: Figure 3-5 is illustrative of the type of mapping available as a result of the hazard exposure assessment. This figure shows critical facilities that are located in or near (i.e., within 500 feet) the 1% annual flood zone on FEMA's Flood Insurance Rate Maps (FIRMs) or within a potential future 1% annual chance flood zone (i.e., within 1,000 feet).

¹⁶ Hazard profiles [will be] included for all twelve natural hazards in *Section 3: Hazard Identification and Risk Assessment* of the CC HMPU Base Plan.

Part 3: Hazard Identification and Risk Assessment

Figure 3-5: Commercial Township Critical Facilities and 1% Annual Chance Flood Zone



Mapping results are available for the following hazards (where applicable for individual jurisdictions):

- Coastal Erosion & Sea Level Rise
- Dam Failure [pending data from NJDEP]
- Earthquake
- Extreme High Temperature
- Flood – per FEMA FIRM mapping
- Flood - per National Flood Insurance Program data [pending data from FEMA Region II]
- Geologic Hazards
- High Wind and Severe Weather (heavy summer rains and winter snow loads)
- Levee Failure [pending data from NJDEP]
- Wildfire

Tabulations: Selected data culled from the hazard exposure assessment process is displayed in the following tables:

- Table 3-5 indicates hazard exposure for general building stock
- Table 3-6 indicates hazard exposure for critical facilities

Part 3: Hazard Identification and Risk Assessment

Table 3-5: Commercial Township General Building Stock Hazard Exposure

Hazard	Number of Exposed Buildings	Percent of Total Buildings in the Jurisdiction	Value of Exposed Buildings	Percent of Total Value in the Jurisdiction
Coastal Erosion ¹⁷	0	N/A	0	N/A
Sea Level Rise - 3 feet increase	94	3.23%	\$11,836,500	4.78%
Flood - Within 1 % Annual Chance Zone	238	8%	\$26,199,300	11%
Flood - Near (within 500 feet) of 1% Annual Chance Zone	1,223	42%	\$128,071,412	52%
Earthquake – Structure built before 1927 ¹⁸	588	24%	\$70,298,000	33%
High Winds / Severe Weather – Structure built before 1975	1,801	72%	\$149,154,600	70%
Wildfire – Composite score > 2.5 ¹⁹	51	1.75%	\$2,068,200	0.84%

Table 3-6: Commercial Township Critical Facilities Hazard Exposure²⁰

Hazard	Number of Critical Facilities	CF #s
Coastal Erosion	None	N/A
Sea Level Rise	2	CF-05, CF-09
Flood - Within 1 % Annual Chance Zone	3	CF-05, CF-06, CF-09
Flood - Near (within 500 feet) of 1% Annual Chance Zone	4	CF-01, CF-02, CF-03, CF-04
Flood – Future potential (within 1,000 feet) 1% Annual Chance Zone	None	N/A
Wildfire	9	CF-01, CF-02, CF-03, CF-04, CF-05, CF-06, CF-08, CF-09, CF-10

In addition, all critical facilities in Cumberland County are exposed to the following hazards and potentially subject to power outages, and structural and/or contents damage:

- Earthquake
- Extreme Temperatures
- Severe Weather – Summer (including heavy rains)
- Severe Weather – Winter (including heavy snow loads)

¹⁷ All supporting data for Coastal Erosion, Sea Level Rise (3-foot rise), Flood (all) can be viewed at https://docs.google.com/spreadsheets/d/1fcN5hL3Jz4X7mldFyKs6wol6J6IAR9bSsvJPiQe_A0Q/edit?usp=sharing

¹⁸ All supporting data for Earthquake, High Winds, and Severe Weather can be viewed at <https://docs.google.com/spreadsheets/d/1Zx1LZwKQ8esqdv4c9hbbSZurtMjH4UITQWJY1LrZezc/edit?usp=sharing>

¹⁹ All supporting data for Wildfire can be viewed at https://docs.google.com/spreadsheets/d/1JAbfd3A-eCHI93pZFaPVuM_H2yvuUzeHCmoijv-oxsw/edit?usp=sharing

²⁰ All supporting data for critical facility hazard exposure can be viewed at <https://docs.google.com/spreadsheets/d/1MPLiOANm7fHoyKuxyWqyang26LTSPayTxJvLmK5IGPg/edit?usp=sharing>

Part 3: Hazard Identification and Risk Assessment

Part 3.5: Demographic Considerations

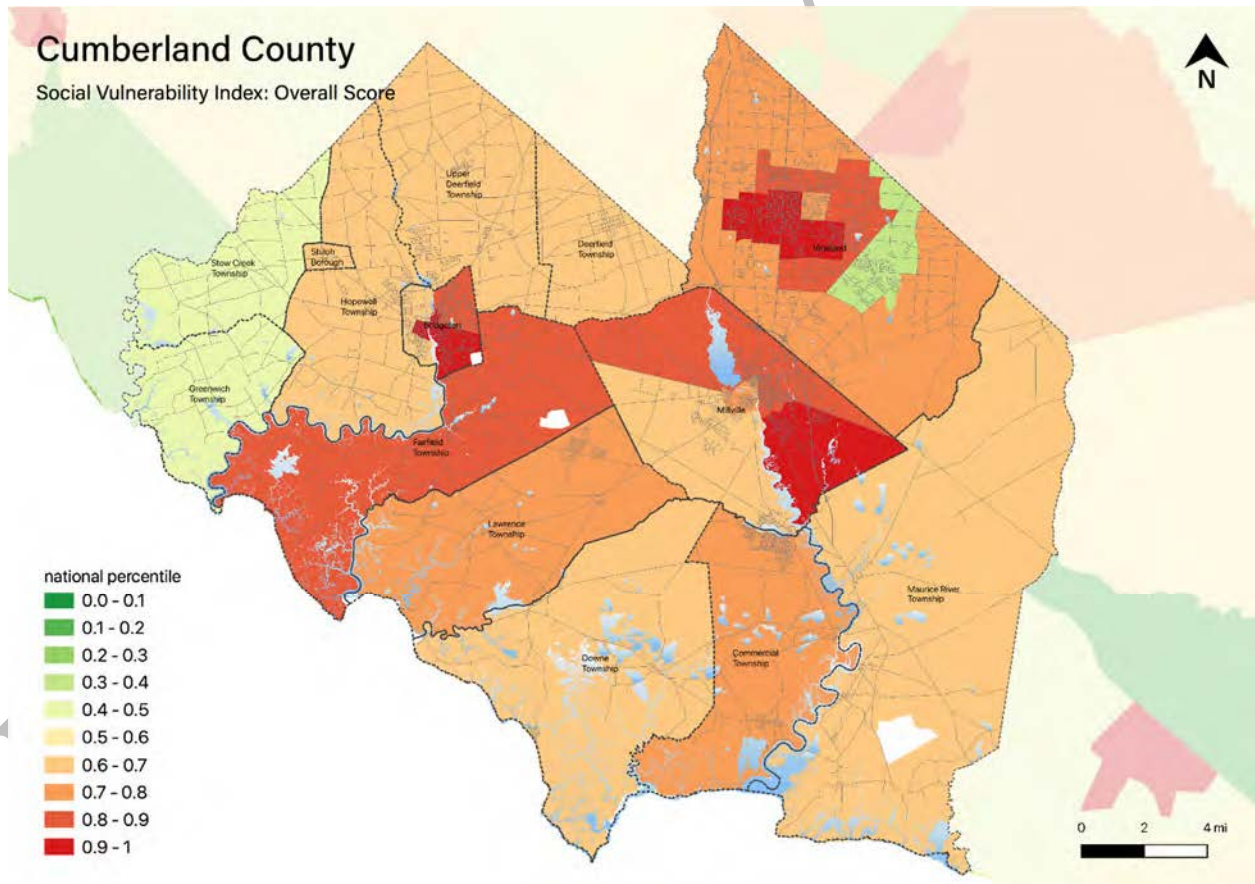
Demographic considerations include general population and land use factors. Table 3-7 includes current population estimates and changes since the previous US Census²¹:

Table 3-7: Commercial Township General Population Demographics

Metric	Current Estimates
2010 Population	5,178
2019 Population	4,979
Percent Population Change (2010-2019)	- 3.84%
Land Area	32.13 sq. miles
Population Density	155.0 / sq. mile

Demographic considerations also include differences in social vulnerability²². Figure 3-6 shows the overall Social Vulnerability (SVI) Index overall scores for Cumberland County.

Figure 3-6: Cumberland County Social Vulnerability Index: Overall Scores



²¹ US Census, 2019 ACS 5 Year Estimates, Table ID DP5

²² Social vulnerability considerations **will be** described in *Section 3: Hazard Identification and Risk Assessment* of the CC HMPU Base Plan.

Part 3: Hazard Identification and Risk Assessment

For Commercial Township, Table 3-8 includes selected metrics where social vulnerability considerations are notably higher when compared with all national census tracts:

Table 3-8: Commercial Township Social Vulnerability Considerations²³

Metric	Percentile
Percentage of persons: With a disability	95 th
Percentage of persons: Leading a household as a single parent	84 th
Percentage of persons: Living in group quarters	65 th

In addition, the percentage of residents earning below poverty level = 17.8% (compared with the average in New Jersey of 10.4%).

Part 3.6: Observations

- Outreach and guidance should be provided for residents, business owners, and property owners for:
 - Properties in or near sea level rise, flood zones, or wildfire hazard areas.
 - Older buildings to help evaluate potential risk of damage due to hazards such as Earthquake, High Winds, and Severe Winter Weather (i.e., heavy snow loads).
- All critical facilities are potentially vulnerable to Earthquake, High Winds, and Severe Weather (heavy rains in summer and snow loads in winter).
- A few critical facilities are potentially vulnerable to Sea Level Rise, Flood and Wildfire and will be identified as priorities for follow-up critical facility field evaluations.
- Priority for follow-up should also be focused on critical facilities housing vulnerable populations related to Extreme Temperature and Severe Weather hazards. For example, determining and documenting (cross referencing EOP) how residents will be moved to facilities providing shelter including cooling and warming centers (all of which would need adequate back-up power and hardening).

²³ All supporting data for SVI can be viewed at https://docs.google.com/spreadsheets/d/10zb_Qlg2CqGxb45_fcKiP46swaC16-fORxYTIOiAkP0/edit#gid=1481479799

Part 3: Hazard Identification and Risk Assessment

Part 3.7: Hazard Priorities [review / confirm or revise highlighted entries]

As a key step in the Hazard Identification and Risk Assessment (HIRA) process, the twelve (12) natural hazards identified in the CC HMPU Base Plan were discussed during the Municipal Working Group Work Sessions and the relative priority of these hazards was identified.

Based on their personal experience as well as the results of the HIRA, the Municipal Working Group rated the hazards as follows:

High Priority

- Coastal Erosion & Sea Level Rise
- Flood
- Levee Failure
- Wildfire

Moderate Priority

- Dam Failure
- High Wind

Low Priority

- Drought
- Earthquake
- Extreme Temperature: Hot & Cold
- Severe Weather – Summer
- Severe Weather – Winter

One additional hazard was identified but was not considered applicable to the municipality:

- Geologic Hazards

Part 4: Mitigation Measures

Part 4: Mitigation Measures

Part 4 includes six subparts:

- *Part 4.1: Mitigation Goals and Strategy*
- *Part 4.2: NJ4 HMP Mitigation Measures*
- *Part 4.3: Municipal Mitigation Measures – Identification*
- *Part 4.4: Municipal Mitigation Measures – Implementation*
- *Part 4.5: Multi-Jurisdictional Mitigation Measures*
- *Part 4.6: Authorities, Policies, Programs, Resources, and Plan Integration*

Part 4.1: Mitigation Goals and Strategy [review / confirm or revise highlighted entries]

Goals were originally established by the SDVR Hazard Mitigation Steering Committee and validated by the four County Hazard Mitigation Working Groups in response to risk and capability assessment results.

As part of the NJ4 HMP plan update process, these goals were reviewed and edited by the Municipal Working Groups for use in the Municipal Appendices. In addition, the Municipal Working Groups for the CC HMPU reviewed and [reaffirmed/edited] these goals for continued use in the Appendices.

All mitigation measures in the Municipal Appendix are related to at least one of these four goal statements.

- **Goal 1: Improve education and outreach efforts** regarding potential risk of natural hazards and appropriate mitigation measures that can be used to reduce risk (including programs, activities, and projects)
- **Goal 2: Improve data collection, use, and sharing** to reduce the risk of natural hazards
- **Goal 3: Improve capabilities and coordination** at municipal, county, and state levels to plan and implement hazard mitigation measures
- **Goal 4: Plan and implement projects** to mitigate identified natural hazards, known problems, and areas of concern

Based on these goals, the results of the HIRA, and experience of participants in the plan update process, the Municipal Working Group identified an overarching strategy for mitigation:

- **Identify and address known problems or areas of concern for critical facilities and vulnerable populations**
- **Provide opportunities for residents and property owners to access available information about risk reduction and mitigation measures, in particular for Repetitive Flood Loss properties**
- **Institutionalize hazard mitigation into municipal activities and programs through regular interactions of the Municipal Working Group and integration of related regulatory programs and planning initiatives**
- **Stay informed regarding changing conditions and related improvements in hazard and risk data due to future natural hazard events and increasing understanding of the effects of climate change and use the information as part of periodic evaluations of and refinements or additions to the municipality's mitigation program**

The mitigation measures [to be] described in Parts 4.3 through 4.5 of the Municipal Appendix reflect this strategy.

Part 4: Mitigation Measures

Part 4.2: NJ4 HMP Mitigation Measures

Known problems and areas of concern were the basis for mitigation measures identified in the NJ4 HMP. In cases where these problems and concerns still exist at the time of the CC HMPU, the related NJ4 HMP mitigation measures **will be** candidates for inclusion in the Municipal Appendix.

Table 3-9 identifies the status of mitigation measures included in the NJ4 HMP. These entries were based on information provided by the Municipal Working Group. In some cases, the NJ4 HMP mitigation measures **will be** carried over as part of the Municipal Appendix as **will be** indicated in the “Comments” column and the far right-hand column of Table 3-9.

In addition to reviewing all entries for accuracy, need to provide confirmation and/or information for all highlighted entries.

Table 3-9: Status of Commercial Township NJ4 HMP Mitigation Measures

Mitigation Action, Program, or Project	Status	Comments	Mitigation Measure # 2425
M-1: Identify and pursue outreach and education opportunities to inform municipal residents, businesses, and property owners.	Work-in-progress	Work-in-progress included: <ul style="list-style-type: none"> ▪ Reverse 911 used by the Township and the School Board for non-emergency public information. 	To be carried over as part of M-1
M-2: Prioritize critical facilities and complete site and facility surveys to identify vulnerabilities and potential mitigation measures.			
M-3: Prioritize recurrent drainage problem areas and initiate data collection to track unreimbursed damages and related response and recovery expenses.			
M-4: Conduct regular Municipal Working Group meetings.			
M-5: Install permanent backup emergency power generator at Port Norris Elementary School (CF-7).	No longer considered relevant	Facility has been closed.	
M-6: Install permanent backup emergency power generator at Haleyville-Mauricetown Elementary School (CF-8).	Work-in-progress	Completed in 2018 using HMGP from Superstorm Sandy ²⁶ . However, transfer switch needs repair.	To be carried over as will be [# TBD]
M-7: Work with Bayshore Center at Bivalveto secure permanent backup emergency power generator at Bayshore Center at Bivalve (CF-10).	No progress, lack of funding		To be carried over as will be [# TBD]

²⁴ Detailed information for identification and implementation of municipal (M-#) mitigation measures **will be included** in Tables 3-10 and 8-11.

²⁵ Detailed information for identification and implementation of multi-jurisdictional (MJ-#) mitigation measures **will be included** in Table 3-12.

²⁶ Cumberland County Round 1 Generator Program.

Part 4: Mitigation Measures

Mitigation Action, Program, or Project	Status	Comments	Mitigation Measure # 2425
M-8: Install permanent backup emergency power generator at Community Center (CF-11).	No progress, lack of funding	Potential facility for mobile generator hook-up.	To be carried over as [# TBD]
M-9: Maintain and upgrade berm located at Peak Of the Moon area.	Work-in-Progress	On-going repairs to berms realizing mixed results. USACE Project is looking at as part of a larger project	To be carried over as multi-jurisdictional mitigation measure [# TBD]
M-10: Address identified Repetitive Flood Loss Properties.	[identify status]		To be carried over as [# TBD pending receipt of information from FEMA RII]
M-11: Harden / retrofit Township Hall (CF-1).	[identify status]		To be carried over as [# TBD]
M-12: Harden / retrofit Port Norris Elementary School (CF-7).	No longer considered relevant	Facility has been closed.	
M-13: Harden / retrofit Haleyville-Mauricetown Elementary School (CF-8).	[identify status]		To be carried over as [# TBD]
M-14: Consultant assessment to define and identify private levee locations within Commercial Township.	Work-in-Progress	PSE&G has leveed and maintains series of berms and levees in Port Norris.	To be carried over as multi-jurisdictional mitigation measure [# TBD]
M-15: Clean and maintain ditches on the bay / reduce phragmites throughout Commercial Township to reduce risk of wildfire.	Work-in-Progress	Ditch maintenance by County is on-going; at end of 3-year plan to get work NJ Forest Service on-going effort to increase fire break / berms for residential areas in Port Norris	To be carried over as multi-jurisdictional mitigation measure [# TBD]
MJ-1: Sheet piles on county bridge at Berry Avenue to protect against erosion.	[identify status]		To be carried over as multi-jurisdictional mitigation measure [# TBD]
MJ-2: Maurice River Shore Protection Improvement Phase I.	[identify status]		To be carried over as multi-jurisdictional mitigation measure [# TBD]
MJ-3: Bulkhead for public wharf area to protect shoreline.	[identify status]		To be carried over as multi-jurisdictional mitigation measure [# TBD]
MJ-4: Maurice River Flood Control Structure.	[identify status]		To be carried over as multi-jurisdictional mitigation measure [# TBD]

Part 4: Mitigation Measures

Mitigation Action, Program, or Project	Status	Comments	Mitigation Measure # 2425
MJ-5: Maurice Riverfront Roadway Elevation Improvements.	Work-in-Progress	Township partially raised roadway elevation.	To be carried over as multi-jurisdictional mitigation measure [# TBD]
MJ-6: Maurice River Mouth Stabilization.	Work-in-Progress	Grant to American Littoral Society for multi-faceted project. Currently out to bid, construction to start in 2022, working with Maurice River Township.	To be carried over as multi-jurisdictional mitigation measure [# TBD]
MJ-7: Alleviate flooding at county bridge at Berry Avenue. 15	Work-in-Progress	[provide explanation for work-in-progress status]	To be carried over as multi-jurisdictional mitigation measure [# TBD]
MJ-8: Alleviate flooding at State Police Barracks at Public Wharf. 18	Work-in-Progress	Improved, by Township and local property owner, but still floods	To be carried over as multi-jurisdictional mitigation measure [# TBD]
MJ-9: Assess Laurel Lake Dam (private dam) to identify upgrade measures and work with private property owners to identify funding mechanisms. Dam located on a County Road and borders Millville Township.	Completed	Reconstruction completed in [insert year] in the wake of Sandy by property owners.	
MJ-10: Create safety zones around critical facilities in wildfire risk areas.	[identify status]		To be carried over as multi-jurisdictional mitigation measure [# TBD]

Part 4: Mitigation Measures

Part 4.3: Municipal Mitigation Measures – Identification

Table 3-10 **[will include]** the list of mitigation measures that are considered the responsibility of the municipality. These mitigation measures:

- Reflect the goals and strategy identified in Part 4.1
- Include projects carried over from NJ4 HMP as detailed in Part 4.2
- Include new projects, programs or activities identified by the Municipal Working Groups including measures to address known problems or areas of concern for critical facilities and vulnerable populations
- Address Repetitive Flood Loss (RL) and Severe Repetitive Flood Loss Properties (SRL)²⁷ if applicable

Table 3-10 **[will include]**:

- Brief description of the mitigation action, program, or project
- Hazard(s) addressed by the measure
- Relevant goal(s) addressed by the measure
- Whether the measure pertains to existing or new structures or both

Note: Mitigation measures with discrete locations **[will be]** shown in Figure 3-7.

Table 3-10: Commercial Township Municipal Mitigation Measures Identification

#	Mitigation Action, Program, or Project	Hazard(s)	Goal (s)	Existing or New Structures
M-1	<p><u>Municipal Mitigation Program</u> – including sustained efforts in cooperation with Cumberland County Office of Emergency Management (CC OEM) to:</p> <ul style="list-style-type: none"> ▪ Conduct outreach and education for residents, businesses, and property owners ▪ Complete critical facility field evaluations to identify potential vulnerabilities and mitigation measures ▪ Compile relevant data regarding hazard impacts ▪ Support regular interactions of the Municipal Working Group ▪ Seek integration of hazard mitigation with other parallel planning initiatives 	All	All	All

²⁷ Section 3: Hazard Identification and Risk Assessment of the CC HMPU Base Plan **[will include]** a description of RL and SRL properties.

Part 4: Mitigation Measures

Part 4.4: Municipal Mitigation Measures – Implementation

Table 3-11 **[will include]** information identified by the Municipal Working Group:

- Part(ies) responsible for following up with implementation of the measure
- Priority for implementation considering a range of criteria²⁸
- Project Type to help determine funding options and implementation mechanisms at the municipal level²⁹
- Estimated Cost, including estimates provided by the Municipal Working Group or approximate ranges for projects that are in early stages of development
- Target Date, indicating desired completion dates assuming availability of funding
- Next step(s) anticipated to implement the identified mitigation measures at the municipal level

Table 3-11: Commercial Township Municipal Mitigation Measures Implementation

#	Mitigation Action, Program, or Project	Responsible Part(ies)	Priority	Project Type	Estimated Cost (\$)	Target Date	Next Step(s)
M-1	Municipal Mitigation Program	Office of Emergency Management	High	Program	Staff Time	On-going, sustained effort	<ul style="list-style-type: none"> ▪ Identify outreach and education objectives and methods (working with CC OEM) ▪ Set priorities (if necessary) and initiate critical facility field assessments ▪ Identify schedule for plan updates (for plan integration efforts)

²⁸ Section 4: Mitigation Measures of the CC HMPU Base Plan **[will include]** a description of evaluation criteria considered by the Municipal Working Group.

²⁹ Section 4: Mitigation Measures of the CC HMPU Base Plan **[will include]** a description of project types and related information regarding funding options and implementation mechanisms.

Part 4: Mitigation Measures

Part 4.5: Multi-Jurisdictional Mitigation Measures

During the Municipal Working Group Work Sessions, the Municipal Working Group **[will identify]** some NJ4 HMP mitigation measures that need to be carried over, as well as new areas of concern, as mitigation measures where implementation requires participation or leadership from other levels of government, including county, state, and federal agencies. These multi-jurisdictional mitigation measures **[will be]** included in Table 3-12.

Section 4: Mitigation Measures of the CC HMPU Base Plan **[will describe]** multi-jurisdictional implementation strategies in detail. Section 4 **[will identify]** multi-jurisdictional mitigation measures that Municipal Working Groups believe are partly or wholly the responsibility of County agencies. These measures **[will be]** referred to the County Working Group for consideration. As part of the mitigation measures in the County Appendix to the NJ4 HMP Regional Hazard Mitigation Plan, the County Working Group will be working with the municipalities to identify:

- Specific responsibilities amongst different level(s) of government to address these problem areas
- Mitigation measures or related projects which may address the described problem areas that are already acknowledged as County responsibilities including identifying the appropriate County agency or department taking the lead role and status of implementing these mitigation measures
- Which, if any, additional mitigation measures the member agencies of the County Working Group will assume responsibility to implement

Note: Multi-jurisdictional mitigation measures with discrete locations **[will be]** shown in Figure 3-7.

Table 3-12: Commercial Township Multi-Jurisdictional Mitigation Measures

#	Problem Description	Hazard(s) Addressed	Goal Addressed	Applies to Existing or New Structures	Potential Partners	Priority

Figure 3-7: Commercial Township Mitigation Project Locations

Preliminary Draft

Part 4: Mitigation Measures

Part 4.6: Authorities, Policies, Programs, Resources, and Plan Integration

Part 4.6 includes three (3) subparts:

- Authorities, Policies, and Programs - Cross referencing relevant information and recommendations in the CC HMPU Base Plan regarding existing authorities, policies, and programs in the region and specific information about the jurisdiction's participation and continued compliance in the National Flood Insurance Program (NFIP)
- Capabilities and Coordination - Cross referencing relevant information and recommendations in the CC HMPU Base Plan regarding improving capabilities and coordination at the municipal level and specific information about the jurisdiction's available resources
- Plan Review and Integration – Identifying plans and programs included in the development of Plan Integration recommendations in the CC HMPU Base Plan

Authorities, Policies, and Programs

Section 1.3: Existing Authorities, Policies, Programs, and Resources of the CC HMPU Base Plan **will summarize** relevant authorities, policies, and programs related to hazard mitigation in the County including the NFIP.

Continuing municipal participation in the NFIP as part of the implementation of the CC HMPU by the municipality, includes:

- Involvement of Floodplain Manager / Administrator during the CC HMPU implementation process
- Commitment to adopt updated FIRMs and evaluate / update the municipality's Flood Management Plan and/or Ordinance as appropriate per recommendations **to be included** in Section 4.6 of the CC HMPU Base Plan

Capabilities and Coordination

The update of the NJ4 HMP **will include** reexamining municipal hazard mitigation capabilities; potential for improving capabilities and coordination within and between jurisdictions; and plan integration considerations, including:

- *Section 1.3: Existing Authorities, Policies, Programs, and Resources* of the CC HMPU Base Plan **will include** summary statements regarding county and municipal resources and the impact of resource limitations on the overall approach to the CC HMPU mitigation strategies.
- *Section 4: Mitigation Measures* of the CC HMPU Base Plan **will include** summary observations and recommendations concerning:
 - Hazard mitigation planning and mitigation measure implementation capabilities and coordination at the county and municipal levels
 - Coordination within municipal governments, between municipal governments and their communities, and between municipal, county, and state agencies responsible for hazard mitigation

Part 4: Mitigation Measures

Plan Review and Integration

Specific documents obtained during the plan update process from the Municipal Working Group include:

- Emergency Operations Plan - Base Plan (2019), due again at end of 2022
- Floodplain Management Ordinance
- Master Plan (2006)
- Capital Improvement Budget (2014)³⁰
- Cumberland County Delaware Bayshore Recovery Plan (2013)
- Hazard Mitigation Grant Awards (2012)
- Hazard Mitigation Grant Award Correspondence (2012)
- Natural Resources Inventory (1993)
- Stormwater Management Plan

Need to identify for highlighted entries:

- ✓ *Current status of all plans?*
- ✓ *For plans that have been "updated", when was the update completed?*
- ✓ *For plans where "no update" has occurred, is an updated scheduled, and if so, when and who is the responsible party?*

Table BP.4-4 in *Section 4.6: Plan Review and Integration* of the CC HMPU Base Plan:

- [Will identify] the primary plans and documents collected from each of the participating municipalities.
- [Will include] the results of reviewing the primary plans and documents to determine the extent to which these documents reflect up-to-date hazard risk and mitigation.
- [Will include] recommendations for integrating the results of the CC HMPU, including hazard mitigation data, goals, measures, and/or recommendations with existing plans and programs at the municipal level that are relevant to all participating municipalities and incorporated by reference in each of the jurisdiction-specific Appendices including:
 - Hazard Assessments
 - Emergency Operations Plans
 - Floodplain Management Ordinances
 - Master Plans and Reexamination Reports
 - Other plans and documents

The plan maintenance process [will articulate and specify] a commitment to review and follow these recommendations during future scheduled updates of these various documents as considered appropriate by the Working Group and the governing body of the municipality.

³⁰ <http://www.commercialtwp.com/finance-commercial-twp-nj.html>

Attachment A: Public Review Comments

Public review comments [will be] recorded during the public review of the Commercial Township Preliminary Draft and Draft versions of the Municipal Appendix on [dates to be determined]:

Table 3.A-1: Public Review Comments

Comment Date and Time	Comment	Response

Preliminary Draft

Attachment B: Adoption Resolution

Following this page [will be] the Adoption Resolution for the Commercial Township Municipal Appendix as approved by the Commercial Township Committee.

Preliminary Draft

Attachment C: Approval Letter

Following this page [will be] the Approval Letter for the Commercial Township Municipal Appendix.

Preliminary Draft