



Cumberland County Multi-Hazard Mitigation Plan Update  
**Participating Jurisdiction Appendices**

**Appendix 6**  
**Fairfield Township, New Jersey**

Preliminary Draft

September 7, 2021

## Notes to Preliminary Draft Reviewers

This Preliminary Draft of the Fairfield Township Appendix to the Cumberland County Multi-Hazard Mitigation Plan Update (CC HMPU) includes:

Updated tables containing information available as of September 7<sup>th</sup> for the community's:

- Working Group
- Critical Facilities
- Mitigation Measures included in the 2016 Mitigation Plan for Four New Jersey Counties (NJ4 HMP)
- Plan Review and Integration document status

In addition, the Preliminary Draft contains:

- Preliminary Hazard Identification and Risk Assessment (HIRA) Update – including mapping and data tabulations regarding vulnerability to natural hazards and social vulnerability considerations
- Hazard Priorities – as determined by the Working Group
- Goals and Strategies

Finally, the Preliminary Draft includes initial lists of proposed Municipal and Multi-Jurisdictional Mitigation Measures to be included in the CC HMPU.

Text highlighted in **yellow** indicates information requested of the community's Working Group as part of this review.

Text highlighted in **blue** indicates information to be provided and/or actions to be taken at a later date.

Please provide any questions, input, or comments to your community's Emergency Management Coordinator:

Michael Burden

[Michael.Burden@fairfieldtownshipnj.org](mailto:Michael.Burden@fairfieldtownshipnj.org)

This review period will close on Friday, October 1<sup>st</sup>. However, there will be additional opportunities to participate in the development of the CC HMPU. These opportunities will be identified on the project website (<https://cchmpu21.com>).

---

## Table of Contents

---

|   |             |
|---|-------------|
| <b>Table of Contents</b>  | <b>6-i</b>  |
| <b>Part 1 Overview</b>  | <b>6-1</b>  |
| 1.1: Cumberland County Multi-Hazard Mitigation Plan Update            | 6-1         |
| 1.2: Fairfield Township Municipal Appendix                            | 6-1         |
| <b>Part 2 Participation</b>   | <b>6-2</b>  |
| 2.1: Municipal Working Group Participation                            | 6-2         |
| 2.2: Public Participation   | 6-4         |
| <b>Part 3 Hazard Identification and Risk Assessment</b>               | <b>6-5</b>  |
| 3.1: Profile  | 6-5         |
| 3.2: General Building Stock   | 6-7         |
| 3.3: Critical Facilities  | 6-8         |
| 3.4: Hazard Exposure Assessment                                       | 6-10        |
| 3.5: Demographic Considerations                                       | 6-13        |
| 3.6: Observations   | 6-14        |
| 3.7: Hazard Priorities  | 6-15        |
| <b>Part 4 Mitigation Measures</b>                                     | <b>6-16</b> |
| 4.1: Mitigation Goals and Strategy                                    | 6-16        |
| 4.2: NJ4 HMP Mitigation Measures                                      | 6-17        |
| 4.3: Municipal Mitigation Measures – Identification                   | 6-19        |
| 4.4: Municipal Mitigation Measures – Implementation                   | 6-20        |
| 4.5: Multi-Jurisdictional Mitigation Measures                         | 6-21        |
| 4.6: Authorities, Policies, Programs, Resources, and Plan Integration | 6-23        |

---

## Table of Contents

---

### List of Figures

|  |      |
|--|------|
| Figure 6-1: Fairfield Township Location Map                                      | 6-5  |
| Figure 6-2: Fairfield Township Base Map  | 6-6  |
| Figure 6-3: Fairfield Township Building Footprints                               | 6-7  |
| Figure 6-4: Fairfield Township Critical Facilities                               | 6-10 |
| Figure 6-5: Fairfield Township Critical Facilities & 1% Annual Chance Flood Zone | 6-11 |
| Figure 6-6: Fairfield Township Social Vulnerability Index: Overall Scores        | 6-13 |
| Figure 6-7: Fairfield Township Mitigation Project Locations                      | 6-22 |

### List of Tables

|   |      |
|---|------|
| Table 6-1: Fairfield Township Working Group                                 | 6-2  |
| Table 6-2: Public Participation   | 6-4  |
| Table 6-3: Fairfield Township Buildings per Land Use Type                   | 6-7  |
| Table 6-4: Fairfield Township Critical Facilities Inventory                 | 6-8  |
| Table 6-5: Fairfield Township General Building Stock Hazard Exposure        | 6-12 |
| Table 6-6: Fairfield Township Critical Facilities Hazard Exposure           | 6-12 |
| Table 6-7: Fairfield Township General Population Demographics               | 6-13 |
| Table 6-8: Fairfield Township Social Vulnerability Considerations           | 6-14 |
| Table 6-9: Status of Fairfield Township NJ4 HMP Mitigation Measures         | 6-17 |
| Table 6-10: Fairfield Township Municipal Mitigation Measures Identification | 6-19 |
| Table 6-11: Fairfield Township Municipal Mitigation Measures Implementation | 6-20 |
| Table 6-12: Fairfield Township Multi-Jurisdictional Mitigation Measures     | 6-21 |

### Attachments

|  |       |
|--|-------|
| Attachment 6.A: Public Review Comments | 6.A-1 |
| Attachment 6.B: Adoption Resolution    | 6.B-1 |
| Attachment 6.C: Approval Letter        | 6.C-1 |

---

## Part 1: Overview

---

### Part 1.1: Cumberland County Multi-Hazard Mitigation Plan Update

The Cumberland County Multi-Hazard Mitigation Plan Update (CC HMPU) incorporates input from all 15 participating jurisdictions in Cumberland County, including Cumberland County and 14 separate municipalities.

The CC HMPU is an update of the Mitigation Plan for Four New Jersey Counties (NJ4 HMP) that was completed by all fifteen jurisdictions in Cumberland County along with over 70 additional jurisdictions from Camden, Gloucester, and Salem Counties. The Cumberland County portions of the NJ4 HMP were adopted by the participating jurisdictions and approved by the Federal Emergency Management Agency in 2016.

The CC HMPU has two main parts:

- Cumberland County Multi-Hazard Mitigation Plan Update, or the “Base Plan”.
- County and Municipal Appendices.

The Base Plan **will include** descriptions and information that is common to all 15 participating jurisdictions organized according to the following three focus areas:

- Planning Process
- Hazard Identification and Risk Assessment
- Mitigation Measures

The County and Municipal Appendices include specific information for these same three focus areas for each of the 15 participating jurisdictions. Detailed tabulations are included in these Municipal Appendices for critical facilities, the status of past mitigation activities, and proposed mitigation measures for each municipality.

### Part 1.2: Fairfield Township Municipal Appendix

This Municipal Appendix is focused on Fairfield Township in Cumberland County, New Jersey.

The Fairfield Township Municipal Working Group **will recommend** the Fairfield Township Municipal Appendix for adoption to the Fairfield Township Committee.

The Fairfield Township Committee **will adopt** the Municipal Appendix by resolution (see Attachment B: Adoption Resolution).

Region II of the Federal Emergency Management Agency **will approve** the Municipal Appendix (see Attachment C: Approval Letter).

## Part 2: Participation

### Part 2.1: Municipal Working Group Participation

Part 2.1 includes:

- *Municipal Working Group members including positions in the community, meetings and work sessions attended, and specific contributions to the Municipal Appendix*
- *Municipal positions and organizations that were invited but were not able to participate in the plan update process*
- *Municipal positions and organizations that have been recommended by the Federal Emergency Management Agency (FEMA) as candidates for participation on Municipal Working Groups but do not exist in the municipality*

Table 6-1 identifies the Municipal Working Group members. As [will be] detailed in *Section 2: Planning Process* of the Base Plan, the Municipal Working Groups are comprised of community representatives who worked to make sure mitigation measures included in the Municipal Appendix addressed the risks faced by residents, businesses, and property owners and reflected the priorities of the community.

Municipal Working Group members reviewed briefing materials and contributed during Work Sessions and Meetings and [will review] the Preliminary Draft and Draft versions of the CC HMPU Base Plan and Appendices. The Working Group will also continue to stay involved during the implementation and maintenance of the CC HMPU.

Due to the on-going COVID-19 pandemic during the plan update process, Working Group meetings were conducted in a variety of ways including virtual meetings. However, when local conditions permitted, in-person meetings were conducted.

*Note: Two members of the Working Group also participated in the development of the 2016 NJ4 HMP. These members are indicated with an (\*) following their last names.*

**Table 6-1: Fairfield Township Working Group**

| First Name | Last Name | Department   | Position   | Project Kick-off Meeting <sup>1</sup> | Round 1 Work Session <sup>2</sup>   | Round 2 Work Session <sup>3</sup> | Working Group Meeting <sup>4</sup> | Contribution <sup>5</sup>                  |
|------------|-----------|--|--|---------------------------------------|-------------------------------------|-----------------------------------|------------------------------------|--|
| Michael    | Burden    | Administration                                       | Administrator / Emergency Management Coordinator | <input checked="" type="checkbox"/>   | <input checked="" type="checkbox"/> |                                   |                                    | Organized Working Group and Work Sessions. |
| Johnny     | Bogan *   | OEM  | Deputy Emergency Management Coordinator          |                                       | <input checked="" type="checkbox"/> |                                   |                                    |  |
| Ben        | Byrd      | Township Committee                                   | Mayor  |                                       |                                     |                                   |                                    |  |
| Marvin     | Pierce    | Township Committee / Fairfield Volunteer Fire Co. #1 | Deputy Mayor / Chief                             |                                       |                                     |                                   |                                    |  |

<sup>1</sup> Project Kickoff Meeting was held on May 20, 2021.

<sup>2</sup> Round 1 Work Session was held on August 20, 2021.

<sup>3</sup> Round 2 Work Session [will be] held on [to be determined].

<sup>4</sup> Working Group Meeting [will be] held on [to be determined (if applicable)].

<sup>5</sup> Additional or unusual contributions are noted in the far-right hand column.

## Part 2: Participation

| First Name | Last Name | Department               | Position                                     | Project Kick-off Meeting <sup>1</sup> | Round 1 Work Session <sup>2</sup> | Round 2 Work Session <sup>3</sup> | Working Group Meeting <sup>4</sup> | Contribution <sup>5</sup> |
|------------|-----------|--------------------------|--|---------------------------------------|-----------------------------------|-----------------------------------|------------------------------------|---------------------------|
| Marion     | Kennedy   | Environmental Commission | Chairman                                     |                                       |                                   |                                   |                                    |                           |
| Robert     | Mulford * | Engineering              | Township Engineer / Floodplain Administrator |                                       |                                   |                                   |                                    |                           |
| Jonathan   | Burks     | Public Works             | Director                                     |                                       | ☑                                 |                                   |                                    |                           |
| Eric       | Kizner    | Planning                 | GIS / IT Specialist                          |                                       |                                   |                                   |                                    |                           |
| Michelle   | Kennedy   | School Board             | Member                                       |                                       |                                   |                                   |                                    |                           |

The following lists candidate positions and organizations within the community that **will be extended invitations to participate** during the development of the Municipal Appendix. These positions and organizations will continue to be extended invitations to participate during subsequent plan implementation and maintenance activities.<sup>6</sup>

- Building Code Official (via shared services with Upper Deerfield Township)
- Emergency Medical Services (via Spirit Hospital)
- Community / Faith-Based Organizations (via pending Interfaith Council)

The following lists positions and organizations that are generally recommended for consideration as members of the Municipal Working Groups by FEMA but do not currently exist within the community. An invitation to participate will be extended if positions are created or filled and as organizations are formed.

- Police
- Environmental Organizations
- Non-Governmental Organizations
- Critical Infrastructure and Key Resources
- Business Associations
- Major employers and businesses
- Healthcare Institutions

<sup>6</sup> Plan implementation and maintenance activities **will be** described in *Section 4: Mitigation Measures* of the CC HMPU Base Plan.

## Part 2: Participation

### Part 2.2: Public Participation

Part 2.2 **will include** all opportunities provided to the public and interested parties in the municipality to participate during the plan update process.

Table 6-2 **will identify** the date, type of involvement, and location (where applicable) for all opportunities provided to the public and interested parties to participate in the development of the plan update.

**Table 6-2: Public Participation**

| Date   | Type of Involvement  | Location                       |
|--|--|--------------------------------|
| [insert date link was established]             | Link to Project Website <sup>7</sup> established and maintained.   | [insert municipal website URL] |
| [insert date meeting was held (if applicable)] | Public meeting conducted with presentation and open discussion.  | [insert location]              |
| September 8, 2021                              | Preliminary Municipal Appendix available for public comment.   | Project Website                |
| [insert date link was established]             | Notice posted re: Preliminary Municipal Appendix review period with link to Project Website.                                     | [insert municipal website URL] |
| [date(s) to be determined]                     | Public outreach via [insert audience(s) and outreach method(s)].   | [insert location(s)]           |
| [date to be determined]                        | Draft Municipal Appendix <b>will be</b> available for public comment.  | Project Website                |
| [date to be determined]                        | Public hearing <b>will be</b> conducted regarding the Draft Municipal Appendix providing for open discussion and public comment. | [insert location]              |

Public comments and input received for the Preliminary Draft and Draft versions of the Municipal Appendix **will be**:

- Considered by the Municipal Working Group and **will be** incorporated into the Municipal Appendix where appropriate.
- Included in Attachment A to the Municipal Appendix along with a brief explanation of if and how the comments were addressed in the Municipal Appendix.

In addition, the Municipal Appendix **will be** adopted as part of a regularly scheduled public meeting (see Attachment B: Adoption Resolution).

Public education and outreach is an on-going mitigation measure included in the Municipal Appendix.<sup>8</sup> In addition, public participation will continue to be encouraged during subsequent plan implementation and maintenance activities.<sup>9</sup>

<sup>7</sup> <https://cchmpu21.com/documents>

<sup>8</sup> See Mitigation Measure M-1 in Part 4 of the Municipal Appendix.

<sup>9</sup> Public education and outreach **will be** described in *Section 4: Mitigation Measures* of the CC HMPU Base Plan.



## Part 2: Participation

### Part 3: Hazard Identification and Risk Assessment

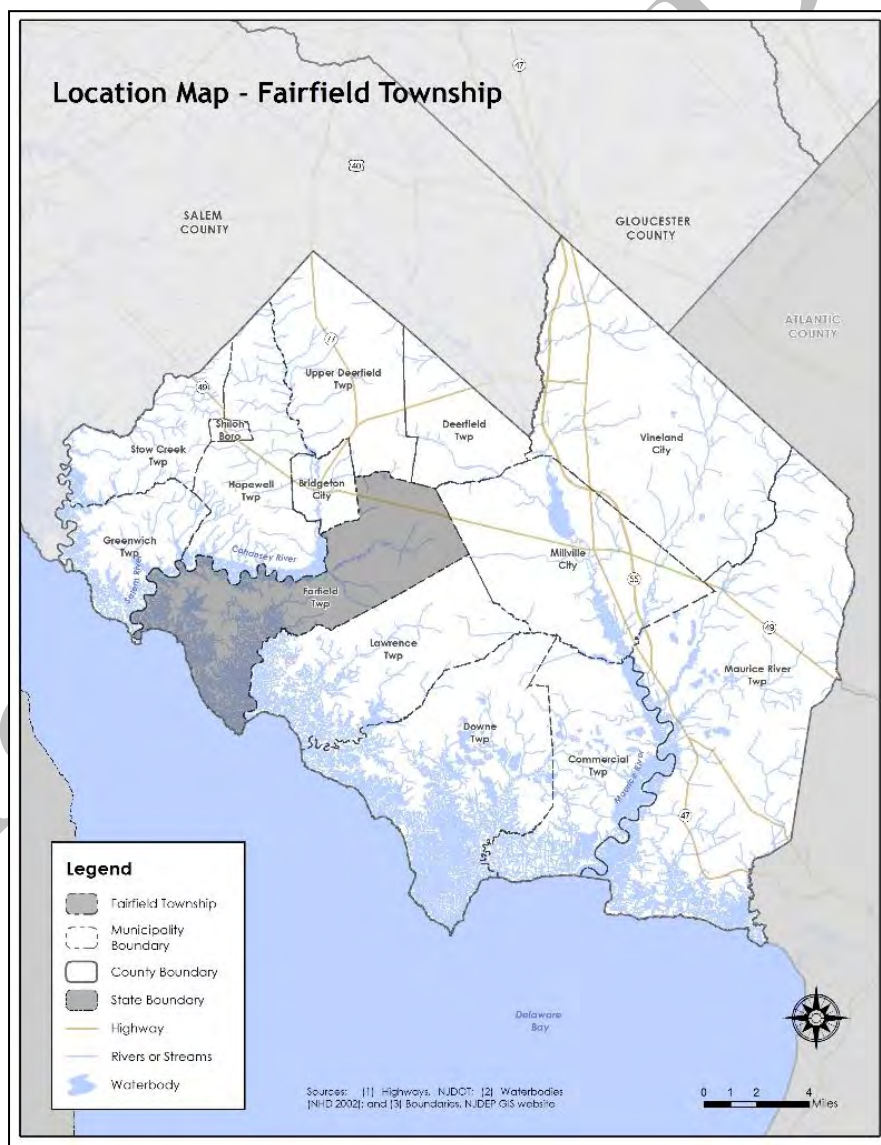
Part 3 includes seven subparts:

- Part 3.1: Profile
- Part 3.2: General Building Stock
- Part 3.3: Critical Facilities
- Part 3.4: Hazard Exposure Assessment
- Part 3.5: Demographic Considerations
- Part 3.6: Observations
- Part 3.7: Hazard Priorities

#### Part 3.1: Municipal Profile

Fairfield Township is located in the west-central part of Cumberland County (See Figure 6-1).

Figure 6-1: Fairfield Location Map



## Part 2: Participation

Fairfield Township is a historical town located in the western part of Cumberland County. The Township is a rural and agricultural community that is a blend of tidal marshes, open fields, and small communities. Approximately 88% of the land is agricultural, marine, state-owned or floodplain. Unincorporated communities include Fairton, Gouldtown, and Sea Breeze.

Per Figure 6-2, major water bodies include the Delaware Bay, which is the western boundary of the municipality, the Cohansy River, and the Rattlesnake Gut. Major transportation routes include State Highway Routes 49 and Cumberland County Routes 553 and 601. The land is predominantly flat and a high percentage of existing land cover consists of forests and marshes.

Figure 6-2: Fairfield Township Base Map



## Part 2: Participation

### Part 3.2: General Building Stock

As of 2015, there are 2,985 buildings in Fairfield Township with a total assessed value of improvements of \$380,701,500. Figure 6-3 shows the footprints of these buildings.

**Figure 6-3: Fairfield Township Building Footprints<sup>10</sup>**

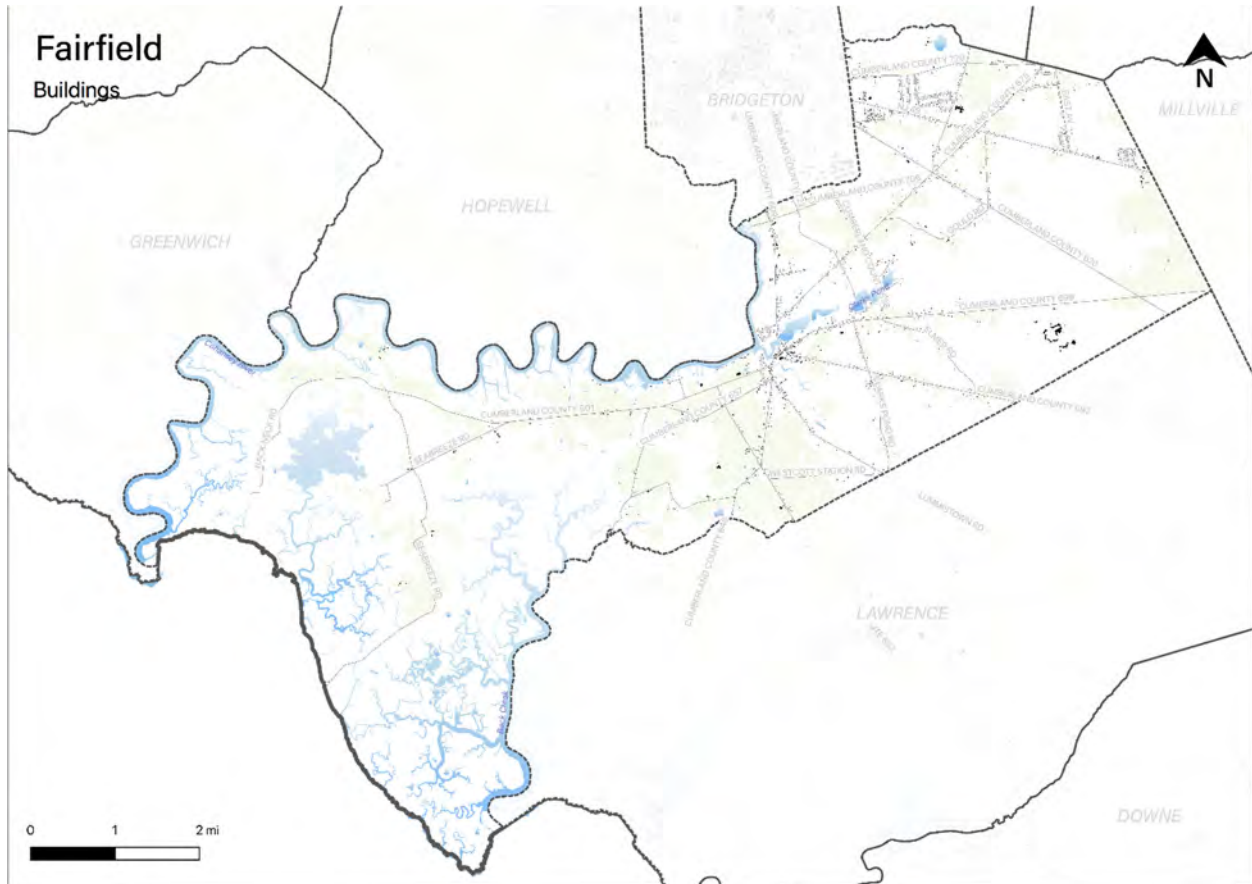


Table 6-3 [will show] the distribution of these structures according to land use distinctions.

**Table 6-3: Fairfield Township Buildings per Land Use Type<sup>11</sup>**

| Land Use Type | Number of Buildings |
|---------------|---------------------|
| Residential   | [TBD]               |
| Commercial    | [TBD]               |
| Industrial    | [TBD]               |

<sup>10</sup> Building footprint data was isolated from "Impervious Surfaces" data (2015) per <https://gisdata-njdep.opendata.arcgis.com/>. Note: This (map/publication/report) was developed using New Jersey Department of Environmental Protection Geographic Information System digital data, but this secondary product has not been verified by NJDEP and is not state-authorized or endorsed.

<sup>11</sup> Land use types [will be] isolated from MOD-IV Parcels and Tax Assessor data composite (2021) per <https://njogis-newjersey.opendata.arcgis.com/documents/parcels-and-mod-iv-of-cumberland-county-nj-shp-download/about> from the New Jersey Office of GIS

## Part 2: Participation

### Part 3.3: Critical Facilities<sup>12</sup>

As of August 2021, there are nine critical facilities in Fairfield Township.

Critical facilities are prime candidates for mitigation measures due to important functions staged from these facilities prior to, during, and after natural hazards including emergency services and housing vulnerable populations.

Table 6-4 includes current inventory information for municipal critical facilities **and will include** cross-references to related mitigation measures **to be** identified in Part 4 of the Municipal Appendix. Figure 6.4 shows the location of these critical facilities.

**Table 6-4: Fairfield Township Critical Facilities Inventory**

| CF # | Name                        | Type                   | Sub-Type   | Address                                  | Co-located CF # | Shelter (Y/N) | Generator (Y/N) | Comments           | Mitigation Measure # |
|------|-----------------------------|------------------------|--|--|-----------------|---------------|-----------------|--------------------|----------------------|
| CF-1 | Township Hall               | Municipal              | Administrative Offices   | 70 Fairton Gouldtown Road, Bridgeton     | CF-2, CF-5      | Y             | Y               |                    | <b>[TBD]</b>         |
| CF-2 | Emergency Operations Center | EOC                    | Co-located Facilities  | 70 Fairton Gouldtown Road, Bridgeton     | CF-1, CF-5      | N             | Y               |                    | <b>[TBD]</b>         |
| CF-3 | Gouldtown Fire Company      | FireStation            | Stations   | 1137 Millville-Bridgeton Road, Bridgeton |                 | N             | Y               | Portable generator | <b>[TBD]</b>         |
| CF-4 | Fairton Fire Company        | FireStations / EMS     | Stations   | 43 Main Street, Bridgeton                |                 | N             | Y               |                    | <b>[TBD]</b>         |
| CF-5 | Public Works                | Public Works           | Combined Administrative Office, Maintenance / Work Area, Equipment / material Storage, and Fueling Station | 70 Fairton Gouldtown Road, Bridgeton     | CF-1, CF-2      | N             | N               |                    | <b>[TBD]</b>         |
| CF-6 | Water Tower                 | Utilities – Water      | Water Towers   | 375 Gouldtown-Woodruff Road, Bridgeton   | CF-8            | N/A           | Y               | Partial generator  | <b>[TBD]</b>         |
| CF-7 | Sewer Pump Station          | Utilities – Wastewater | Pump Stations / Lift Stations  | Longview Drive, Bridgeton                |                 | N/A           | N               |                    | <b>[TBD]</b>         |

<sup>12</sup> Critical facility definitions and considerations **will be** described in *Section 3: Hazard Identification and Risk Assessment* of the CC HMPU Base Plan.

**Part 2: Participation**

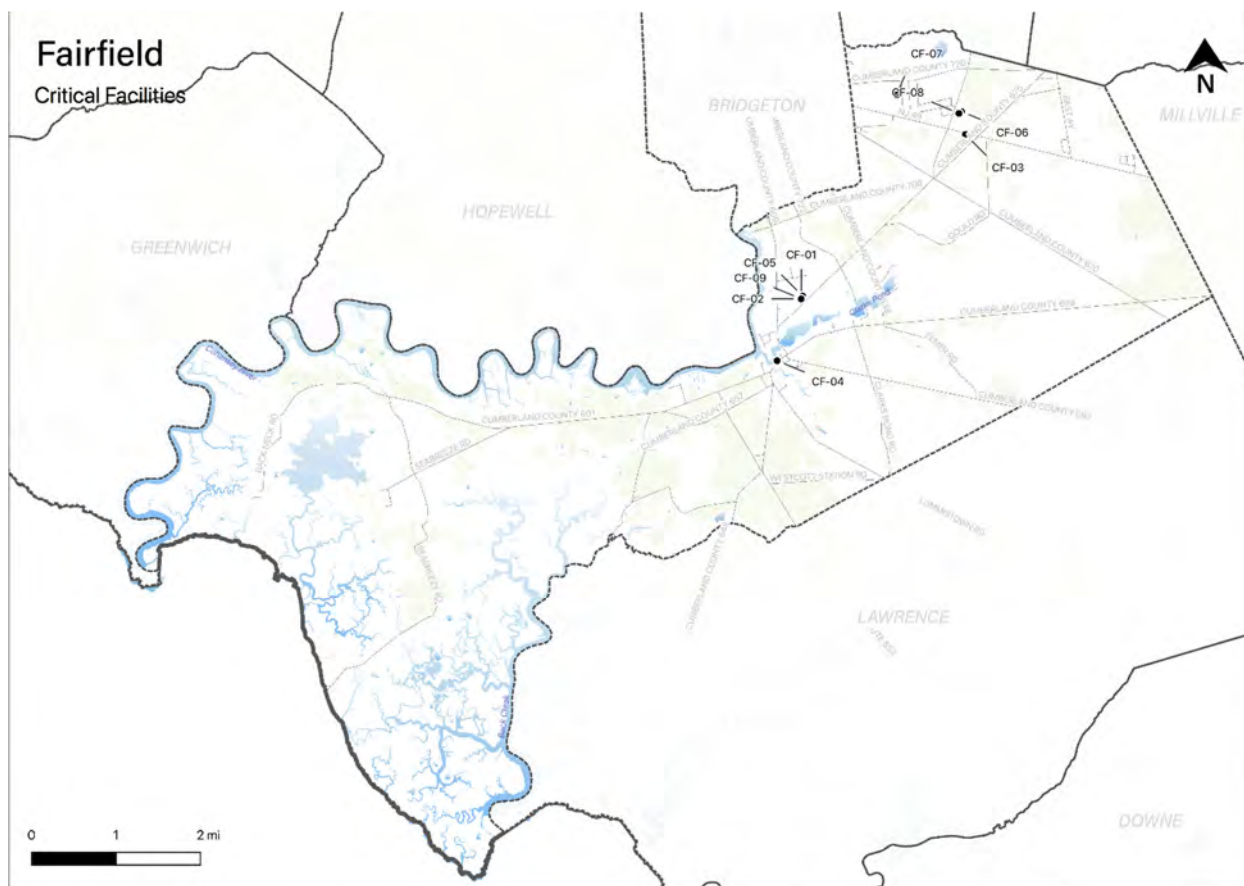
| CF # | Name                      | Type                              | Sub-Type       | Address                                | Co-located CF # | Shelter (Y/N)   | Generator (Y/N) | Comments | Mitigation Measure # |
|------|---------------------------|-----------------------------------|----------------|--|-----------------|-----------------|-----------------|----------|----------------------|
| CF-8 | Fairfield Township School | Schools                           | Public Schools | 375 Gouldtown-Woodruff Road, Bridgeton | CF-6            | N               | Y               |          | [TBD]                |
| CF-9 | Senior Center             | Vulnerable Populations Facilities | Senior Centers | 68 Fairton Gouldtown Road, Bridgeton   |                 | Y <sup>13</sup> | N               |          | [TBD]                |

Preliminary Draft

<sup>13</sup> Potential use as shelter / warming & cooling center

## Part 3: Hazard Identification and Risk Assessment

Figure 6-4: Fairfield Township Critical Facilities



Note: All mapping corresponding to results described in Parts 3.3 through 3.5 can be viewed in .pdf format at: <https://www.dropbox.com/sh/6b2p3ujhnpaotoq/AAAY4t5I79KNziVZHjGdtZvBa?dl=0>

### Part 3.4: Hazard Exposure Assessment

Hazard exposure assessments [will be completed] for the twelve (12) natural hazards identified in the CC HMPU Base Plan<sup>14</sup>.

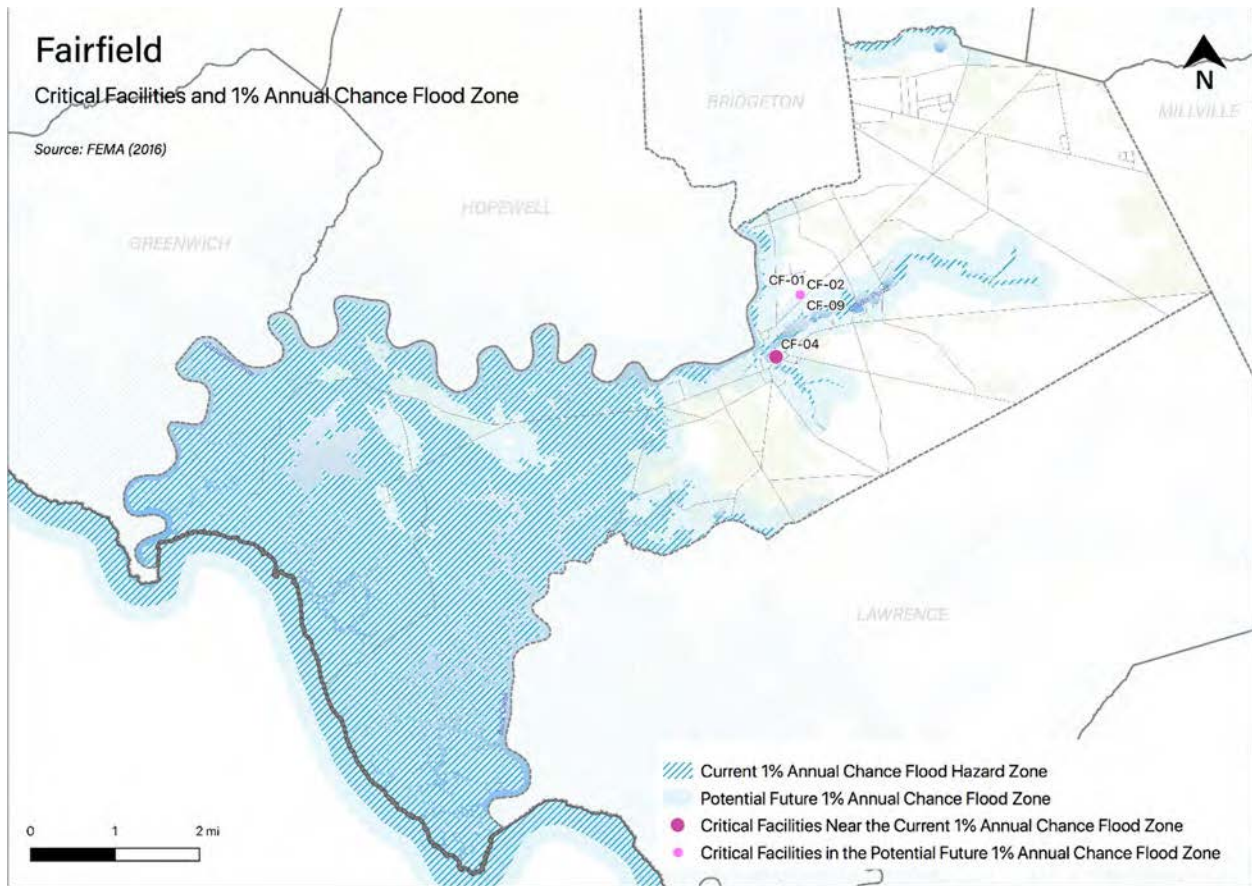
Key results for Fairfield Township are depicted in the following.

**Mapping:** Figure 6-5 is illustrative of the type of mapping available as a result of the hazard exposure assessment. This figure shows critical facilities that are located in or near (i.e., within 500 feet) the 1% annual flood zone on FEMA's Flood Insurance Rate Maps (FIRMs) or within a potential future 1% annual chance flood zone (i.e., within 1,000 feet).

<sup>14</sup> Hazard profiles [will be] included for all twelve natural hazards in *Section 3: Hazard Identification and Risk Assessment* of the CC HMPU Base Plan.

### Part 3: Hazard Identification and Risk Assessment

Figure 6-5: Fairfield Township Critical Facilities and 1% Annual Chance Flood Zone



Mapping results are available for the following hazards (where applicable for individual jurisdictions):

- Coastal Erosion & Sea Level Rise
- Dam Failure [pending data from NJDEP]
- Earthquake
- Extreme High Temperature
- Flood – per FEMA FIRM mapping
- Flood - per National Flood Insurance Program data [pending data from FEMA Region II]
- Geologic Hazards
- High Wind and Severe Weather (heavy summer rains and winter snow loads)
- Levee Failure [pending data from NJDEP]
- Wildfire

Tabulations: Selected data culled from the hazard exposure assessment process is displayed in the following tables:

- Table 6-5 indicates hazard exposure for general building stock
- Table 6-6 indicates hazard exposure for critical facilities

### Part 3: Hazard Identification and Risk Assessment

**Table 6-5: Fairfield Township General Building Stock Hazard Exposure**

| Hazard  | Number of Exposed Buildings | Percent of Total Buildings in the Jurisdiction | Value of Exposed Buildings | Percent of Total Value in the Jurisdiction |
|---|-----------------------------|--|----------------------------|--|
| Coastal Erosion <sup>15</sup>                             | 0                           | N/A  | 0                          | N/A  |
| Sea Level Rise - 3 feet increase                          | 31                          | 1.04%  | \$1,665,267                | 0.44%                                      |
| Flood - Within 1 % Annual Chance Zone                     | 111                         | 4%   | \$5,855,367                | 2%   |
| Flood - Near (within 500 feet) of 1% Annual Chance Zone   | 598                         | 20%  | \$53,986,000               | 14%  |
| Earthquake – Structure built before 1927 <sup>16</sup>    | 319                         | 15%  | \$31,053,700               | 13%  |
| High Winds / Severe Weather – Structure built before 1975 | 1,546                       | 72%  | \$156,212,600              | 65%  |
| Wildfire – Composite score > 2.5 <sup>17</sup>            | 29                          | 0.97%  | \$2,125,600                | 0.56%                                      |

**Table 6-6: Fairfield Township Critical Facilities Hazard Exposure<sup>18</sup>**

| Hazard   | Number of Critical Facilities | CF #s   |
|--|-------------------------------|---|
| Coastal Erosion  | None                          | N/A   |
| Sea Level Rise   | None                          | N/A   |
| Flood - Within 1 % Annual Chance Zone                              | None                          | N/A   |
| Flood - Near (within 500 feet) of 1% Annual Chance Zone            | 1                             | CF-4  |
| Flood – Future potential (within 1,000 feet) 1% Annual Chance Zone | 4                             | CF-01, CF-02, CF-04, CF-09                                    |
| Wildfire   | 9                             | CF-01, CF-02, CF-03, CF-04, CF-05, CF-06, CF-07, CF-08, CF-09 |

In addition, all critical facilities in Cumberland County are exposed to the following hazards and potentially subject to power outages, and structural and/or contents damage:

- Earthquake
- Extreme Temperatures
- Severe Weather – Summer (including heavy rains)
- Severe Weather – Winter (including heavy snow loads)

<sup>15</sup> All supporting data for Coastal Erosion, Sea Level Rise (3-foot rise), Flood (all) can be viewed at [https://docs.google.com/spreadsheets/d/1fcN5hL3Jz4X7mldFyKs6wol6J6IAR9bSsvJPiQE\\_A0Q/edit?usp=sharing](https://docs.google.com/spreadsheets/d/1fcN5hL3Jz4X7mldFyKs6wol6J6IAR9bSsvJPiQE_A0Q/edit?usp=sharing)

<sup>16</sup> All supporting data for Earthquake, High Winds, and Severe Weather can be viewed at <https://docs.google.com/spreadsheets/d/1Zx1LZwKQ8esqdv4c9hbbSZurtMjH4UITQWJY1LrZezc/edit?usp=sharing>

<sup>17</sup> All supporting data for Wildfire can be viewed at [https://docs.google.com/spreadsheets/d/1JAbfd3A-eCHI93pZFaPVuM\\_H2yvuUzeHCmoijv-oxsw/edit?usp=sharing](https://docs.google.com/spreadsheets/d/1JAbfd3A-eCHI93pZFaPVuM_H2yvuUzeHCmoijv-oxsw/edit?usp=sharing)

<sup>18</sup> All supporting data for critical facility hazard exposure can be viewed at <https://docs.google.com/spreadsheets/d/1MPLiOANm7fHoyKuxyWqyang26LTSPayTxJvLmK5IGPg/edit?usp=sharing>



**Part 3: Hazard Identification and Risk Assessment**

**Part 3.5: Demographic Considerations**

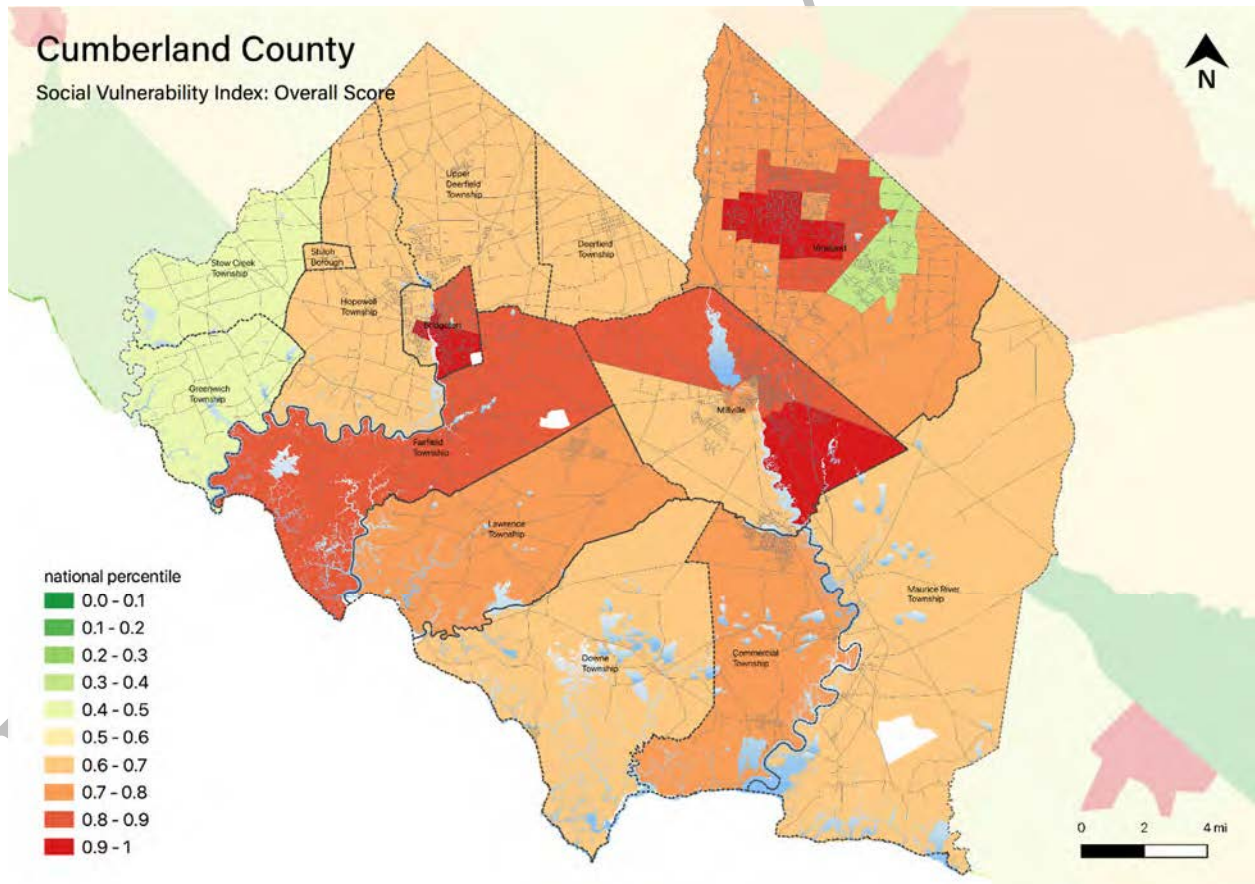
Demographic considerations include general population and land use factors. Table 6-7 includes current population estimates and changes since the previous US Census<sup>19</sup>:

**Table 6-7: Fairfield Township General Population Demographics**

| Metric                                | Current Estimates |
|---------------------------------------|-------------------|
| 2010 Population                       | 6,295             |
| 2019 Population                       | 6,090             |
| Percent Population Change (2010-2019) | - 3.26%           |
| Land Area                             | 41.26 sq. miles   |
| Population Density                    | 147.6 / sq. mile  |

Demographic considerations also include differences in social vulnerability<sup>20</sup>. Figure 6-6 shows the overall Social Vulnerability (SVI) Index overall scores for Cumberland County.

**Figure 6-6: Cumberland County Social Vulnerability Index: Overall Scores**



<sup>19</sup> US Census, 2019 ACS 5 Year Estimates, Table ID DP5

<sup>20</sup> Social vulnerability considerations **will be** described in *Section 3: Hazard Identification and Risk Assessment* of the CC HMPU Base Plan.

### Part 3: Hazard Identification and Risk Assessment

For Fairfield Township, Table 6-8 includes selected metrics where social vulnerability considerations are notably higher when compared with all national census tracts:

**Table 6-8: Fairfield Township Social Vulnerability Considerations<sup>21</sup>**

| Metric  | Percentile <sup>22</sup> |
|---|--------------------------|
| Percentage of persons: Leading a household as a single parent     | 78 <sup>th</sup>         |
| Percentage of persons: With a disability                          | 77 <sup>th</sup>         |
| Percentage of persons: Identifying as racial or ethnic minorities | 72 <sup>nd</sup>         |

In addition, the percentage of residents earning below poverty level = 13.4% (compared with the average in New Jersey of 10.4%).

#### Part 3.6: Observations

- Outreach and guidance should be provided for residents, business owners, and property owners for:
  - Properties in or near sea level rise, flood zones, or wildfire hazard areas.
  - Older buildings to help evaluate potential risk of damage due to hazards such as Earthquake, High Winds, and Severe Winter Weather (i.e., heavy snow loads).
- All critical facilities are potentially vulnerable to Earthquake, High Winds, and Severe Weather (heavy rains in summer and snow loads in winter).
- A few critical facilities are potentially vulnerable to Flood and Wildfire and will be identified as priorities for follow-up critical facility field evaluations.
- Priority for follow-up should also be focused on critical facilities housing vulnerable populations related to Extreme Temperature and Severe Weather hazards. For example, determining and documenting (cross referencing EOP) how residents will be moved to facilities providing shelter including cooling and warming centers (all of which would need adequate back-up power and hardening).

<sup>21</sup> All supporting data for SVI can be viewed at [https://docs.google.com/spreadsheets/d/10zb\\_Qlg2CgGxb45\\_fcKiP46swaC16-fORxYTIOiAkP0/edit#gid=1481479799](https://docs.google.com/spreadsheets/d/10zb_Qlg2CgGxb45_fcKiP46swaC16-fORxYTIOiAkP0/edit#gid=1481479799)

<sup>22</sup> Results are only for Fairfield Township census tract not including New Jersey State correctional Institutions.

---

## Part 3: Hazard Identification and Risk Assessment

---

### Part 3.7: Hazard Priorities [review / confirm or revise highlighted entries]

As a key step in the Hazard Identification and Risk Assessment (HIRA) process, the twelve (12) natural hazards identified in the CC HMPU Base Plan were discussed during the Municipal Working Group Work Sessions and the relative priority of these hazards was identified.

Based on their personal experience as well as the results of the HIRA, the Municipal Working Group rated the hazards as follows:

#### High Priority

- Coastal Erosion & Sea Level Rise
- Dam Failure
- Drought
- Extreme Temperature: Cold & Hot
- Flood
- Severe Weather – Summer
- Severe Storm – Winter Weather
- Wildfire

#### Moderate Priority

- High Wind

#### Low Priority

- Earthquake

Two additional hazards were identified but were not considered applicable to the municipality:

- Geologic Hazards
- Levee Failure

---

## Part 4: Mitigation Measures

---

### Part 4: Mitigation Measures

Part 4 includes six subparts:

- *Part 4.1: Mitigation Goals and Strategy*
- *Part 4.2: NJ4 HMP Mitigation Measures*
- *Part 4.3: Municipal Mitigation Measures – Identification*
- *Part 4.4: Municipal Mitigation Measures – Implementation*
- *Part 4.5: Multi-Jurisdictional Mitigation Measures*
- *Part 4.6: Authorities, Policies, Programs, Resources, and Plan Integration*

#### Part 4.1: Mitigation Goals and Strategy [review / confirm or revise highlighted entries]

Goals were originally established by the SDVR Hazard Mitigation Steering Committee and validated by the four County Hazard Mitigation Working Groups in response to risk and capability assessment results.

As part of the NJ4 HMP plan update process, these goals were reviewed and edited by the Municipal Working Groups for use in the Municipal Appendices. In addition, the Municipal Working Groups for the CC HMPU reviewed and [reaffirmed/edited] these goals for continued use in the Appendices.

All mitigation measures in the Municipal Appendix are related to at least one of these four goal statements.

- **Goal 1: Improve education and outreach efforts** regarding potential risk of natural hazards and appropriate mitigation measures that can be used to reduce risk (including programs, activities, and projects)
- **Goal 2: Improve data collection, use, and sharing** to reduce the risk of natural hazards
- **Goal 3: Improve capabilities and coordination** at municipal, county, and state levels to plan and implement hazard mitigation measures
- **Goal 4: Plan and implement projects** to mitigate identified natural hazards, known problems, and areas of concern

Based on these goals, the results of the HIRA, and experience of participants in the plan update process, the Municipal Working Group identified an overarching strategy for mitigation:

- Identify and address known problems or areas of concern for critical facilities and vulnerable populations
- Provide opportunities for residents and property owners to access available information about risk reduction and mitigation measures, in particular for Repetitive Flood Loss properties
- Institutionalize hazard mitigation into municipal activities and programs through regular interactions of the Municipal Working Group and integration of related regulatory programs and planning initiatives
- Stay informed regarding changing conditions and related improvements in hazard and risk data due to future natural hazard events and increasing understanding of the effects of climate change and use the information as part of periodic evaluations of and refinements or additions to the municipality's mitigation program

The mitigation measures [to be] described in Parts 4.3 through 4.5 of the Municipal Appendix reflect this strategy.

## Part 4: Mitigation Measures

### Part 4.2: NJ4 HMP Mitigation Measures

Known problems and areas of concern were the basis for mitigation measures identified in the NJ4 HMP. In cases where these problems and concerns still exist at the time of the CC HMPU, the related NJ4 HMP mitigation measures **[will be]** candidates for inclusion in the Municipal Appendix.

Table 6-9 identifies the status of mitigation measures included in the NJ4 HMP. These entries were based on information provided by the Municipal Working Group. In some cases, the NJ4 HMP mitigation measures **[will be]** carried over as part of the Municipal Appendix as **[will be]** indicated in the “Comments” column and the far right-hand column of Table 6-9.

*In addition to reviewing all entries for accuracy, need to provide confirmation and/or information for all highlighted entries.*

**Table 6-9: Status of Fairfield Township NJ4 HMP Mitigation Measures**

| Mitigation Action, Program, or Project   | Status                      | Comments  | Mitigation Measure #<br><small>2324</small> |
|--|-----------------------------|---|---|
| <b>M-1:</b> Identify and pursue outreach and education opportunities to inform municipal residents, businesses, and property owners.                           | Work-in-progress            | Work-in-progress included [identify any work-in-progress for these three mitigation measures, e.g., use of Township website for emergency or hazard information dissemination, follow-up with facilities regarding projects, informal discussions among Township officials, etc.] | To be carried over as part of M-1           |
| <b>M-2:</b> Prioritize critical facilities and complete site and facility surveys to identify vulnerabilities and potential mitigation measures.               |                             |   |   |
| <b>M-3:</b> Prioritize recurrent drainage problem areas and initiate data collection to track unreimbursed damages and related response and recovery expenses. |                             |   |   |
| <b>M-4:</b> Conduct regular Municipal Working Group meetings.  |                             |   |   |
| <b>M-5:</b> Update fire water supply plan to include identifying current capabilities, available resources, and potential needs for Fairfield Township.        | No progress, funding issues |   | To be carried over as <b>[# TBD]</b>        |
| <b>M-6:</b> Purchase notification sign board (solar powered).  | No progress, funding issues |   | To be carried over as <b>[# TBD]</b>        |
| <b>M-7:</b> Install permanent back-up emergency power generator at Township Hall / EOC (CF-1 / CF-2).  | Completed                   | Completed in 2018 using HMGP from Superstorm Sandy <sup>25</sup> .  |   |
| <b>M-8:</b> Install permanent back-up emergency power generator at Gouldtown Fire Company (CF-3).  | No progress, funding issues | Potential facility for mobile generator hook-up.  | To be carried over as <b>[# TBD]</b>        |

<sup>23</sup> Detailed information for identification and implementation of municipal (M-#) mitigation measures **[will be included]** in Tables 6-10 and 8-11.

<sup>24</sup> Detailed information for identification and implementation of multi-jurisdictional (MJ-#) mitigation measures **[will be included]** in Table 6-12.

<sup>25</sup> Cumberland County Round 1 Generator Program.

## Part 4: Mitigation Measures

| Mitigation Action, Program, or Project  | Status                                   | Comments   | Mitigation Measure #<br>2324   |
|---|--|--|--|
| <b>M-9:</b> Install permanent back-up emergency power generator at Fairton Fire and Rescue Company (CF-4).              | No progress, funding issues              | Same as M-8  | To be carried over as [# TBD]  |
| <b>M-10:</b> Install permanent back-up emergency power generator at Public Works Facility (CF-5).                       | Work-in-progress                         | Same as M-8, Also, looking at seeing if Township Hall generator can also run Public Works facility   | To be carried over as [# TBD]  |
| <b>M-11:</b> Install permanent back-up emergency power generator at Water Tower (CF-6).                                 | No progress, funding issues              | Same as M-8  | To be carried over as [# TBD]  |
| <b>M-12:</b> Install permanent back-up emergency power generator at Pump Station located on Longview Drive (CF-7).      | No progress, funding issues              | Same as M-8  | To be carried over as [# TBD]  |
| <b>M-13:</b> Install permanent back-up emergency power generator at Fairfield Township School (CF-8).                   | Work-in-progress                         | School is currently pursuing grants/funding to secure a generator  | To be carried over as [# TBD]  |
| <b>M-14:</b> Install permanent back-up emergency power generator at Senior Center (CF-9).                               | Work-in-progress                         | Same as M-8  | To be carried over as [# TBD]  |
| <b>M-15:</b> Install retaining wall at Fairton Fire and Rescue Company to lessen flooding from adjacent Cohansey River. | No progress, funding issues              |  | To be carried over as [# TBD]  |
| <b>M-16:</b> Elevate Sea Breeze Road from Garrison Lane to Keystone Avenue.   | No progress, funding issues              |  | To be carried over as [# TBD]  |
| <b>M-17:</b> Elevate Husted-Landing Road and install roadside protective measures against erosion and flooding.         | No progress, funding issues              |  | To be carried over as [# TBD]  |
| <b>M-18:</b> Address identified Repetitive Flood Loss Properties.   | Work-in-progress                         | [identify nature of work-in-progress including responsible party(ies), and anticipated completed date]   | To be carried over as [# TBD pending receipt of information from FEMA RII] |
| <b>M-19:</b> Establish safety zones for around critical facilities in or near wildfire risk areas.                      | Work-in-progress                         | [identify nature of work-in-progress including responsible party(ies), and anticipated completed date]   | To be carried over as [# TBD]  |
| <b>MJ-1:</b> Retaining wall at Mill Dam on County Route 609 (Bridgeton Fairton Road). Also in the City of Bridgeton.    | Not currently considered a problem area. | Road is currently closed by the County and access to bridge is eliminated since January 2021. Not considered a substantial impediment for EMS / Fire access. | To be carried over as multi-jurisdictional mitigation measure [# TBD]      |

## Part 4: Mitigation Measures

### Part 4.3: Municipal Mitigation Measures – Identification

Table 6-10 [will include] the list of mitigation measures that are considered the responsibility of the municipality. These mitigation measures:

- Reflect the goals and strategy identified in Part 4.1
- Include projects carried over from NJ4 HMP as detailed in Part 4.2
- Include new projects, programs or activities identified by the Municipal Working Groups including measures to address known problems or areas of concern for critical facilities and vulnerable populations
- Address Repetitive Flood Loss (RL) and Severe Repetitive Flood Loss Properties (SRL)<sup>26</sup> if applicable

Table 6-10 [will include]:

- Brief description of the mitigation action, program, or project
- Hazard(s) addressed by the measure
- Relevant goal(s) addressed by the measure
- Whether the measure pertains to existing or new structures or both

*Note:* Mitigation measures with discrete locations [will be] shown in Figure 6-7.

**Table 6-10: Fairfield Township Municipal Mitigation Measures Identification**

| #   | Mitigation Action, Program, or Project  | Hazard(s) | Goal (s) | Existing or New Structures |
|-----|---|-----------|----------|----------------------------|
| M-1 | <p><u>Municipal Mitigation Program</u> – including sustained efforts in cooperation with Cumberland County Office of Emergency Management (CC OEM) to:</p> <ul style="list-style-type: none"> <li>▪ Conduct outreach and education for residents, businesses, and property owners</li> <li>▪ Complete critical facility field evaluations to identify potential vulnerabilities and mitigation measures</li> <li>▪ Compile relevant data regarding hazard impacts</li> <li>▪ Support regular interactions of the Municipal Working Group</li> <li>▪ Seek integration of hazard mitigation with other parallel planning initiatives</li> </ul> | All       | All      | All                        |
|     |   |           |          |                            |
|     |   |           |          |                            |
|     |   |           |          |                            |

<sup>26</sup> Section 3: Hazard Identification and Risk Assessment of the CC HMPU Base Plan [will include] a description of RL and SRL properties.

## Part 4: Mitigation Measures

### Part 4.4: Municipal Mitigation Measures – Implementation

Table 6-11 [will include] information identified by the Municipal Working Group:

- Part(ies) responsible for following up with implementation of the measure
- Priority for implementation considering a range of criteria<sup>27</sup>
- Project Type to help determine funding options and implementation mechanisms at the municipal level<sup>28</sup>
- Estimated Cost, including estimates provided by the Municipal Working Group or approximate ranges for projects that are in early stages of development
- Target Date, indicating desired completion dates assuming availability of funding
- Next step(s) anticipated to implement the identified mitigation measures at the municipal level

**Table 6-11: Fairfield Township Municipal Mitigation Measures Implementation**

| #   | Mitigation Action, Program, or Project | Responsible Part(ies)          | Priority | Project Type | Estimated Cost (\$) | Target Date                | Next Step(s)  |
|-----|--|--------------------------------|----------|--------------|---------------------|----------------------------|---|
| M-1 | Municipal Mitigation Program           | Office of Emergency Management | High     | Program      | Staff Time          | On-going, sustained effort | <ul style="list-style-type: none"> <li>▪ Identify outreach and education objectives and methods (working with CC OEM)</li> <li>▪ Set priorities (if necessary) and initiate critical facility field assessments</li> <li>▪ Identify schedule for plan updates (for plan integration efforts)</li> </ul> |
|     |  |                                |          |              |                     |                            |   |
|     |  |                                |          |              |                     |                            |   |
|     |  |                                |          |              |                     |                            |   |
|     |  |                                |          |              |                     |                            |   |

<sup>27</sup> Section 4: Mitigation Measures of the CC HMPU Base Plan [will include] a description of evaluation criteria considered by the Municipal Working Group.

<sup>28</sup> Section 4: Mitigation Measures of the CC HMPU Base Plan [will include] a description of project types and related information regarding funding options and implementation mechanisms.



## Part 4: Mitigation Measures

### Part 4.5: Multi-Jurisdictional Mitigation Measures

During the Municipal Working Group Work Sessions, the Municipal Working Group [will identify] some NJ4 HMP mitigation measures that need to be carried over, as well as new areas of concern, as mitigation measures where implementation requires participation or leadership from other levels of government, including county, state, and federal agencies. These multi-jurisdictional mitigation measures [will be] included in Table 6-12.

Section 4: Mitigation Measures of the CC HMPU Base Plan [will describe] multi-jurisdictional implementation strategies in detail. Section 4 [will identify] multi-jurisdictional mitigation measures that Municipal Working Groups believe are partly or wholly the responsibility of County agencies. These measures [will be] referred to the County Working Group for consideration. As part of the mitigation measures in the County Appendix to the NJ4 HMP Regional Hazard Mitigation Plan, the County Working Group will be working with the municipalities to identify:

- Specific responsibilities amongst different level(s) of government to address these problem areas
- Mitigation measures or related projects which may address the described problem areas that are already acknowledged as County responsibilities including identifying the appropriate County agency or department taking the lead role and status of implementing these mitigation measures
- Which, if any, additional mitigation measures the member agencies of the County Working Group will assume responsibility to implement

Note: Multi-jurisdictional mitigation measures with discrete locations [will be] shown in Figure 6-7.

**Table 6-12: Fairfield Township Multi-Jurisdictional Mitigation Measures**

| # | Problem Description | Hazard(s) Addressed | Goal Addressed | Applies to Existing or New Structures | Potential Partners | Priority |
|---|---------------------|---------------------|----------------|---------------------------------------|--------------------|----------|
|   |                     |                     |                |                                       |                    |          |
|   |                     |                     |                |                                       |                    |          |
|   |                     |                     |                |                                       |                    |          |

Figure 6-7: Fairfield Township Mitigation Project Locations

Preliminary Draft

---

## Part 4: Mitigation Measures

---

### Part 4.6: Authorities, Policies, Programs, Resources, and Plan Integration

Part 4.6 includes three (3) subparts:

- Authorities, Policies, and Programs - Cross referencing relevant information and recommendations in the CC HMPU Base Plan regarding existing authorities, policies, and programs in the region and specific information about the jurisdiction's participation and continued compliance in the National Flood Insurance Program (NFIP)
- Capabilities and Coordination - Cross referencing relevant information and recommendations in the CC HMPU Base Plan regarding improving capabilities and coordination at the municipal level and specific information about the jurisdiction's available resources
- Plan Review and Integration – Identifying plans and programs included in the development of Plan Integration recommendations in the CC HMPU Base Plan

#### Authorities, Policies, and Programs

*Section 1.3: Existing Authorities, Policies, Programs, and Resources* of the CC HMPU Base Plan **will summarize** relevant authorities, policies, and programs related to hazard mitigation in the County including the NFIP.

Continuing municipal participation in the NFIP as part of the implementation of the CC HMPU by the municipality, includes:

- Involvement of Floodplain Manager / Administrator during the CC HMPU implementation process
- Commitment to adopt updated FIRMs and evaluate / update the municipality's Flood Management Plan and/or Ordinance as appropriate per recommendations **to be included** in Section 4.6 of the CC HMPU Base Plan

#### Capabilities and Coordination

The update of the NJ4 HMP **will include** reexamining municipal hazard mitigation capabilities; potential for improving capabilities and coordination within and between jurisdictions; and plan integration considerations, including:

- *Section 1.3: Existing Authorities, Policies, Programs, and Resources* of the CC HMPU Base Plan **will include** summary statements regarding county and municipal resources and the impact of resource limitations on the overall approach to the CC HMPU mitigation strategies.
- *Section 4: Mitigation Measures* of the CC HMPU Base Plan **will include** summary observations and recommendations concerning:
  - Hazard mitigation planning and mitigation measure implementation capabilities and coordination at the county and municipal levels
  - Coordination within municipal governments, between municipal governments and their communities, and between municipal, county, and state agencies responsible for hazard mitigation

### Plan Review and Integration

Specific documents obtained during the plan update process from the Municipal Working Group include:

- Emergency Operations Plan (2013) Update scheduled in 2021
- Floodplain Ordinance (2016)
- Master Plan (2012)
- Master Plan Reexamination Report Update anticipated in 2022 (per ten-year review and reexamination cycle)
- Stormwater Management Plan (2006)
- Stormwater Control Ordinance (2021)
- Capital Improvement Budget (2020) Update scheduled in 2021
- Cumberland County Delaware Bayshore Recovery Plan (2013)

Table BP.4-4 in *Section 4.6: Plan Review and Integration* of the CC HMPU Base Plan:

- **[Will identify]** the primary plans and documents collected from each of the participating municipalities.
- **[Will include]** the results of reviewing the primary plans and documents to determine the extent to which these documents reflect up-to-date hazard risk and mitigation.
- **[Will include]** recommendations for integrating the results of the CC HMPU, including hazard mitigation data, goals, measures, and/or recommendations with existing plans and programs at the municipal level that are relevant to all participating municipalities and incorporated by reference in each of the jurisdiction-specific Appendices including:
  - Hazard Assessments
  - Emergency Operations Plans
  - Floodplain Management Ordinances
  - Master Plans and Reexamination Reports
  - Other plans and documents

The plan maintenance process **[will articulate and specify]** a commitment to review and follow these recommendations during future scheduled updates of these various documents as considered appropriate by the Working Group and the governing body of the municipality.

---

**Attachment A: Public Review Comments**

---

Public review comments [will be] recorded during the public review of the Fairfield Township Preliminary Draft and Draft versions of the Municipal Appendix on [dates to be determined]:

**Table 6.A-1: Public Review Comments**

| Comment Date and Time | Comment | Response |
|-----------------------|---------|----------|
|                       |         |          |
|                       |         |          |

Preliminary Draft

## Attachment B: Adoption Resolution

---

Following this page [will be] the Adoption Resolution for the Fairfield Township Municipal Appendix as approved by the Fairfield Township Committee.

Preliminary Draft

**Attachment C: Approval Letter**

---

Following this page [will be] the Approval Letter for the Fairfield Township Municipal Appendix.

Preliminary Draft