



Cumberland County Multi-Hazard Mitigation Plan Update
Participating Jurisdiction Appendices

Appendix 9
Lawrence Township, New Jersey

Preliminary Draft

September 7, 2021

Notes to Preliminary Draft Reviewers

This Preliminary Draft of the Lawrence Township Appendix to the Cumberland County Multi-Hazard Mitigation Plan Update (CC HMPU) includes:

Updated tables containing information available as of September 7th for the community's:

- Working Group
- Critical Facilities
- Mitigation Measures included in the 2016 Mitigation Plan for Four New Jersey Counties (NJ4 HMP)
- Plan Review and Integration document status

In addition, the Preliminary Draft contains:

- Preliminary Hazard Identification and Risk Assessment (HIRA) Update – including mapping and data tabulations regarding vulnerability to natural hazards and social vulnerability considerations
- Hazard Priorities – as determined by the Working Group
- Goals and Strategies

Finally, the Preliminary Draft includes initial lists of proposed Municipal and Multi-Jurisdictional Mitigation Measures to be included in the CC HMPU.

Text highlighted in **yellow** indicates information requested of the community's Working Group as part of this review.

Text highlighted in **blue** indicates information to be provided and/or actions to be taken at a later date.

Please provide any questions, input, or comments to your community's Emergency Management Coordinator:

Maurice Cobb
lawrencetwpoem@aol.com

This review period will close on Friday, October 1st. However, there will be additional opportunities to participate in the development of the CC HMPU. These opportunities will be identified on the project website (<https://cchmpu21.com>).

Table of Contents

Table of Contents	9-i
Part 1 Overview	9-1
1.1: Cumberland County Multi-Hazard Mitigation Plan Update	9-1
1.2: Lawrence Township Municipal Appendix	9-1
Part 2 Participation	9-2
2.1: Municipal Working Group Participation	9-2
2.2: Public Participation	9-5
Part 3 Hazard Identification and Risk Assessment	9-6
3.1: Profile	9-6
3.2: General Building Stock	9-8
3.3: Critical Facilities	9-9
3.4: Hazard Exposure Assessment	9-11
3.5: Demographic Considerations	9-14
3.6: Observations	9-15
3.7: Hazard Priorities	9-16
Part 4 Mitigation Measures	9-17
4.1: Mitigation Goals and Strategy	9-17
4.2: NJ4 HMP Mitigation Measures	9-18
4.3: Municipal Mitigation Measures – Identification	9-20
4.4: Municipal Mitigation Measures – Implementation	9-21
4.5: Multi-Jurisdictional Mitigation Measures	9-22
4.6: Authorities, Policies, Programs, Resources, and Plan Integration	9-24

Table of Contents

List of Figures

Figure 9-1: Lawrence Township Location Map	9-6
Figure 9-2: Lawrence Township Base Map	9-7
Figure 9-3: Lawrence Township Building Footprints	9-8
Figure 9-4: Lawrence Township Critical Facilities	9-11
Figure 9-5: Lawrence Township Critical Facilities and 1% Annual Chance Flood Zone	9-12
Figure 9-6: Lawrence Township Social Vulnerability Index: Overall Scores	9-14
Figure 9-7: Lawrence Township Mitigation Project Locations	9-23

List of Tables

Table 9-1: Lawrence Township Working Group	9-2
Table 9-2: Public Participation	9-5
Table 9-3: Lawrence Township Buildings per Land Use Type	9-8
Table 9-4: Lawrence Township Critical Facilities Inventory	9-9
Table 9-5: Lawrence Township General Building Stock Hazard Exposure	9-13
Table 9-6: Lawrence Township Critical Facilities Hazard Exposure	9-13
Table 9-7: Lawrence Township General Population Demographics	9-14
Table 9-8: Lawrence Township Social Vulnerability Considerations	9-15
Table 9-9: Status of Lawrence Township NJ4 HMP Mitigation Measures	9-18
Table 9-10: Lawrence Township Municipal Mitigation Measures Identification	9-20
Table 9-11: Lawrence Township Municipal Mitigation Measures Implementation	9-21
Table 9-12: Lawrence Township Multi-Jurisdictional Mitigation Measures	9-22

Attachments

Attachment 9.A: Public Review Comments	9.A-1
Attachment 9.B: Adoption Resolution	9.B-1
Attachment 9.C: Approval Letter	9.C-1

Part 1: Overview

Part 1.1: Cumberland County Multi-Hazard Mitigation Plan Update

The Cumberland County Multi-Hazard Mitigation Plan Update (CC HMPU) incorporates input from all 15 participating jurisdictions in Cumberland County, including Cumberland County and 14 separate municipalities.

The CC HMPU is an update of the Mitigation Plan for Four New Jersey Counties (NJ4 HMP) that was completed by all fifteen jurisdictions in Cumberland County along with over 70 additional jurisdictions from Camden, Gloucester, and Salem Counties. The Cumberland County portions of the NJ4 HMP were adopted by the participating jurisdictions and approved by the Federal Emergency Management Agency in 2016.

The CC HMPU has two main parts:

- Cumberland County Multi-Hazard Mitigation Plan Update, or the “Base Plan”.
- County and Municipal Appendices.

The Base Plan [will include] descriptions and information that is common to all 15 participating jurisdictions organized according to the following three focus areas:

- Planning Process
- Hazard Identification and Risk Assessment
- Mitigation Measures

The County and Municipal Appendices include specific information for these same three focus areas for each of the 15 participating jurisdictions. Detailed tabulations are included in these Municipal Appendices for critical facilities, the status of past mitigation activities, and proposed mitigation measures for each municipality.

Part 1.2: Lawrence Township Municipal Appendix

This Municipal Appendix is focused on Lawrence Township in Cumberland County, New Jersey.

The Lawrence Township Municipal Working Group [will recommend] the Lawrence Township Municipal Appendix for adoption to the Lawrence Township Committee.

The Lawrence Township Committee [will adopt] the Municipal Appendix by resolution (see Attachment B: Adoption Resolution).

Region II of the Federal Emergency Management Agency [will approve] the Municipal Appendix (see Attachment C: Approval Letter).

Part 2: Participation

Part 2.1: Municipal Working Group Participation

Part 2.1 includes:

- *Municipal Working Group members including positions in the community, meetings and work sessions attended, and specific contributions to the Municipal Appendix*
- *Municipal positions and organizations that were invited but were not able to participate in the plan update process*
- *Municipal positions and organizations that have been recommended by the Federal Emergency Management Agency (FEMA) as candidates for participation on Municipal Working Groups but do not exist in the municipality*

Table 9-1 identifies the Municipal Working Group members. As **[will be]** detailed in *Section 2: Planning Process* of the Base Plan, the Municipal Working Groups are comprised of community representatives who worked to make sure mitigation measures included in the Municipal Appendix addressed the risks faced by residents, businesses, and property owners and reflected the priorities of the community.

Municipal Working Group members reviewed briefing materials and contributed during Work Sessions and Meetings and **[will review]** the Preliminary Draft and Draft versions of the CC HMPU Base Plan and Appendices. The Working Group will also continue to stay involved during the implementation and maintenance of the CC HMPU.

Due to the on-going COVID-19 pandemic during the plan update process, Working Group meetings were conducted in a variety of ways including virtual meetings. However, when local conditions permitted, in-person meetings were conducted.

Note: Eight members of the Working Group also participated in the development of the 2016 NJ4 HMP. These members are indicated with an () following their last names.*

Table 9-1: Lawrence Township Working Group

First Name	Last Name	Department	Position	Project Kick-off Meeting ¹	Round 1 Work Session ²	Round 2 Work Session ³	Working Group Meeting ⁴	Contribution ⁵
Maurice	Cobb, Jr. *	Office of Emergency Management (OEM)	OEM Coordinator	<input checked="" type="checkbox"/>	<input checked="" type="checkbox"/>			Organized Working Group and Work Sessions.
Linda	Cobb	OEM	Staff		<input checked="" type="checkbox"/>			
Peter	Wagner *	OEM	Deputy OEM Coordinator					
John	Marks	EMS	Chief					
George	Ripper	Public Works	Supervisor					

¹ Project Kickoff Meeting was held on May 20, 2021.

² Round 1 Work Session was held on August 5, 2021.

³ Round 2 Work Session **[will be]** held on **[to be determined]**.

⁴ Working Group Meeting **[will be]** held on **[to be determined (if applicable)]**.

⁵ Additional or unusual contributions are noted in the far-right hand column.

Part 2: Participation

First Name	Last Name	Department	Position	Project Kick-off Meeting ¹	Round 1 Work Session ²	Round 2 Work Session ³	Working Group Meeting ⁴	Contribution ⁵
G. Erwin	Sheppard *	Township Committee	Committeeman / Mayor		<input checked="" type="checkbox"/>			
Joseph	Miletta, Jr. *	Township Committee	Committeeman / Deputy Mayor		<input checked="" type="checkbox"/>			
Elmer "Skip"	Bowman *	Township Committee	Committee Person		<input checked="" type="checkbox"/>			
Ruth	Dawson *	Clerk's Office	Township Clerk		<input checked="" type="checkbox"/>			
Kathy	Rodman *	Clerk's Office	Deputy Township Clerk					
Thomas	Seeley	Seeley Law Office	Solicitor		<input checked="" type="checkbox"/>			
Alfred	Humeny	Planning Board	Chairman					
Anthony	Lamanteer	Code Enforcement	Zoning Officer					
Wayne	Shelton	Construction	Construction Official / Floodplain Administrator		<input checked="" type="checkbox"/>			
Stephen	Nardelli	Fralinger Engineering	Township Engineer					
Kevin	Scarlato *	Cedarville Fire Department	Assistant Fire Chief					
ShelleyMarie	Magan	School Board	School Administrator					
Lisa	DiNovi	School Board	Business Administrator					

Part 2: Participation

The following lists candidate positions and organizations within the community that [will be extended invitations to participate] during the development of the Municipal Appendix. These positions and organizations will continue to be extended invitations to participate during subsequent plan implementation and maintenance activities.⁶

- Community / Faith-Based Organizations

The following lists positions and organizations that are generally recommended for consideration as members of the Municipal Working Groups by FEMA but do not currently exist within the community. An invitation to participate will be extended if positions are created or filled and as organizations are formed.

- GIS / IT Specialist
- Police
- Transportation Department
- Business Associations
- Environmental Organizations
- Non-Governmental Organizations
- Critical Infrastructure and Key Resources
- Healthcare Institutions

⁶ Plan implementation and maintenance activities [will be] described in *Section 4: Mitigation Measures* of the CC HMPU Base Plan.

Part 2: Participation

Part 2.2: Public Participation

Part 2.2 **will include** all opportunities provided to the public and interested parties in the municipality to participate during the plan update process.

Table 9-2 **will identify** the date, type of involvement, and location (where applicable) for all opportunities provided to the public and interested parties to participate in the development of the plan update.

Table 9-2: Public Participation

Date	Type of Involvement	Location
[insert date link was established]	Link to Project Website ⁷ established and maintained.	[insert municipal website URL]
[insert date meeting was held (if applicable)]	Public meeting conducted with presentation and open discussion.	[insert location]
September 8, 2021	Preliminary Municipal Appendix available for public comment.	Project Website
[insert date link was established]	Notice posted re: Preliminary Municipal Appendix review period with link to Project Website.	[insert municipal website URL]
[date(s) to be determined]	Public outreach via [insert audience(s) and outreach method(s)].	[insert location(s)]
[date to be determined]	Draft Municipal Appendix will be available for public comment.	Project Website
[date to be determined]	Public hearing will be conducted regarding the Draft Municipal Appendix providing for open discussion and public comment.	[insert location]

Public comments and input received for the Preliminary Draft and Draft versions of the Municipal Appendix **will be**:

- Considered by the Municipal Working Group and **will be** incorporated into the Municipal Appendix where appropriate.
- Included in Attachment A to the Municipal Appendix along with a brief explanation of if and how the comments were addressed in the Municipal Appendix.

In addition, the Municipal Appendix **will be** adopted as part of a regularly scheduled public meeting (see Attachment B: Adoption Resolution).

Public education and outreach is an on-going mitigation measure included in the Municipal Appendix.⁸ In addition, public participation will continue to be encouraged during subsequent plan implementation and maintenance activities.⁹

⁷ <https://cchmpu21.com/documents>

⁸ See Mitigation Measure M-1 in Part 4 of the Municipal Appendix.

⁹ Public education and outreach **will be** described in *Section 4: Mitigation Measures* of the CC HMPU Base Plan.

Part 2: Participation

Part 3: Hazard Identification and Risk Assessment

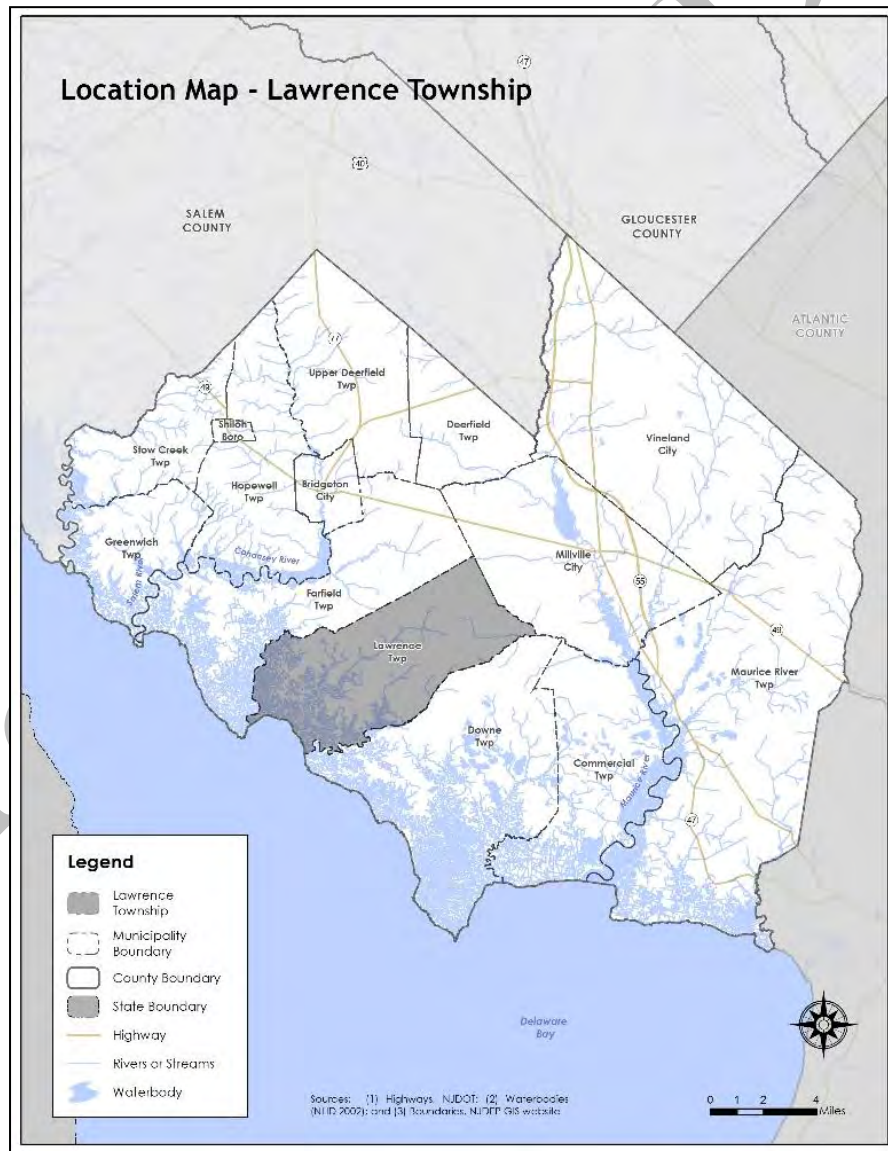
Part 3 includes seven subparts:

- Part 3.1: Profile
- Part 3.2: General Building Stock
- Part 3.3: Critical Facilities
- Part 3.4: Hazard Exposure Assessment
- Part 3.5: Demographic Considerations
- Part 3.6: Observations
- Part 3.7: Hazard Priorities

Part 3.1: Municipal Profile

Lawrence Township is located in the southwestern part of Cumberland County (See Figure 9-1).

Figure 9-1: Lawrence Township Location Map

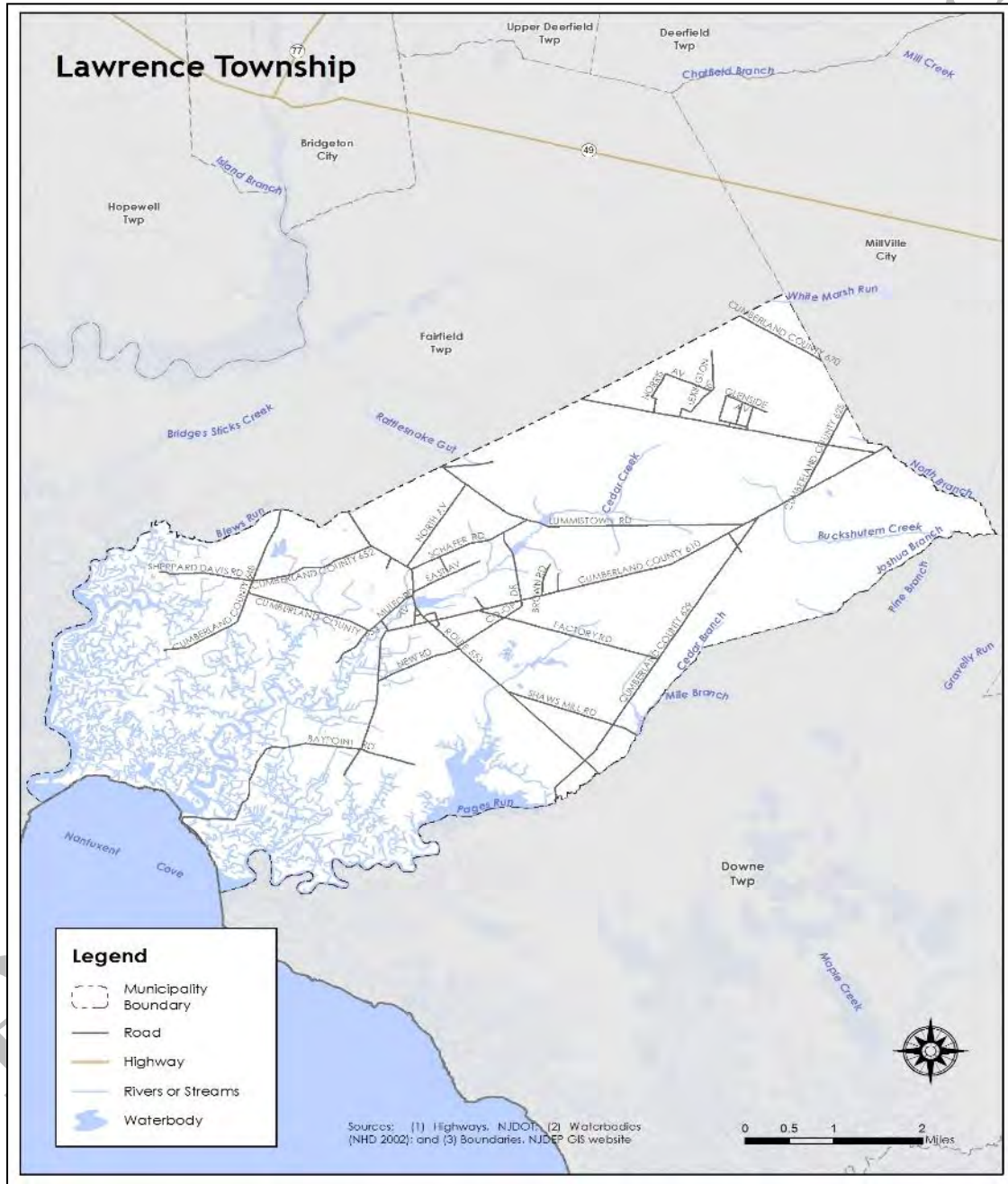


Part 2: Participation

Lawrence Township is comprised largely of farmlands and natural areas, with residential and commercial centers throughout the villages. Villages in the municipality include Bay Point and Cedarville.

Per Figure 9-2, major water bodies include Nantuxent Cove and Pages Run. Major transportation routes include Cumberland County Routes 610 and 629. The land is predominantly flat and existing land consists of farmland, forests, and marshes.

Figure 9-2: Lawrence Township Base Map



Part 3.2: General Building Stock

As of 2015, there are 2,170 buildings in Lawrence Township with a total assessed value of improvements of \$269,654,100. Figure 9-3 shows the footprints of these buildings.

Figure 9-3: Lawrence Township Building Footprints¹⁰

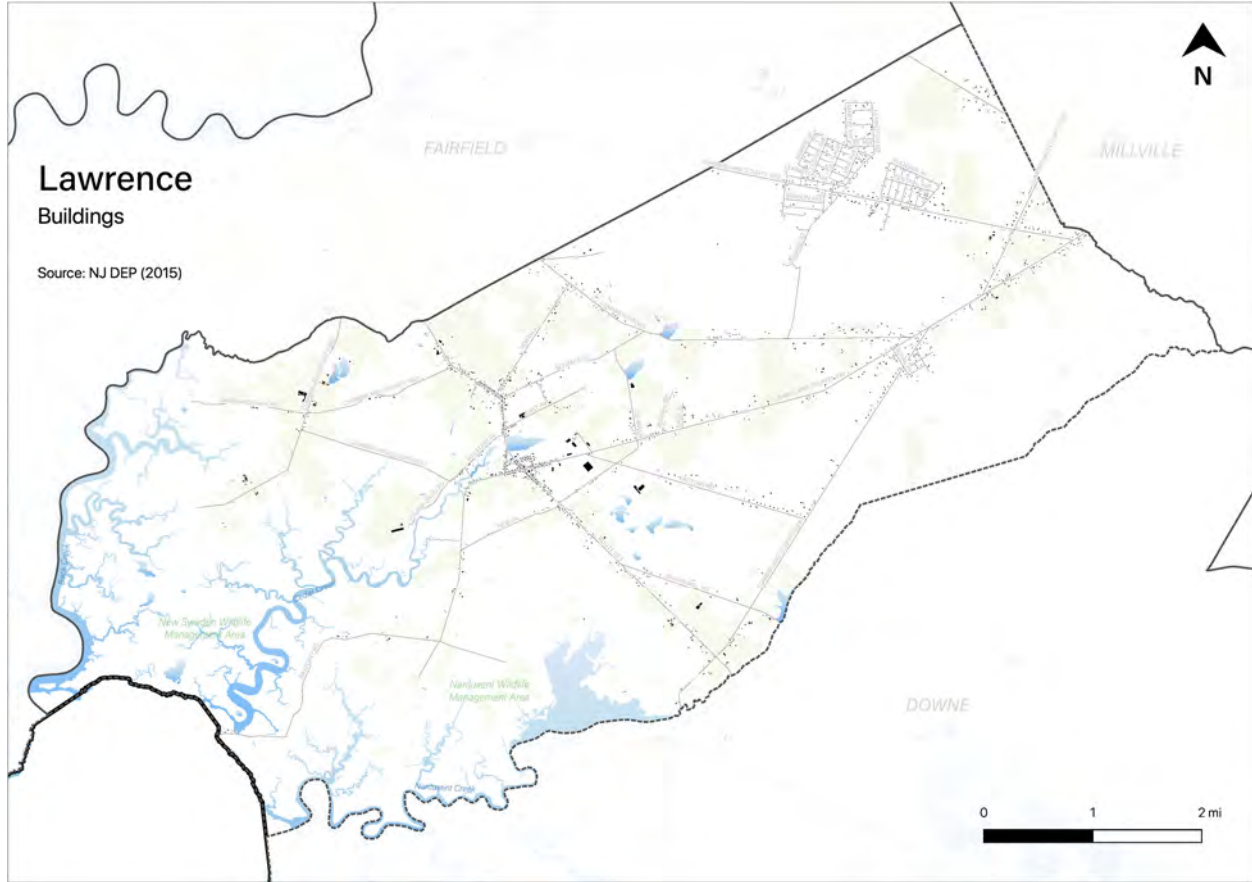


Table 9-3 will show the distribution of these structures according to land use distinctions.

Table 9-3: Lawrence Township Buildings per Land Use Type¹¹

Land Use Type	Number of Buildings
Residential	TBD
Commercial	TBD
Industrial	TBD

¹⁰ Building footprint data was isolated from “Impervious Surfaces” data (2015) per <https://gisdata-njdep.opendata.arcgis.com/>. Note: This (map/publication/report) was developed using New Jersey Department of Environmental Protection Geographic Information System digital data, but this secondary product has not been verified by NJDEP and is not state-authorized or endorsed.

¹¹ Land use types will be isolated from MOD-IV Parcels and Tax Assessor data composite (2021) per <https://njogis-newjersey.opendata.arcgis.com/documents/parcels-and-mod-iv-of-cumberland-county-nj-shp-download/about> from the New Jersey Office of GIS

Part 2: Participation

Part 3.3: Critical Facilities¹²

As of August 2021, there are twelve critical facilities in Lawrence Township.

Critical facilities are prime candidates for mitigation measures due to important functions staged from these facilities prior to, during, and after natural hazards including emergency services and housing vulnerable populations.

Table 9-4 includes current inventory information for municipal critical facilities [and will include] cross-references to related mitigation measures [to be] identified in Part 4 of the Municipal Appendix. Figure 9.4 shows the location of these critical facilities.

Table 9-4: Lawrence Township Critical Facilities Inventory

CF #	Name	Type	Sub-Type	Address	Co-located CF #	Shelter (Y/N)	Generator (Y/N)	Comments	Mitigation Measure #
CF-1	Township Hall	Municipal	Administrative	357 Main Street, Cedarville		N	N		[TBD]
CF-2	Emergency Operations Center	EOC	Co-located Facilities	30 Maple Avenue, Cedarville	CF-3	N	N		[TBD]
CF-3	Cedarville Fire Department – Station 17	FireStation	Stations	30 Maple Avenue, Cedarville		N ¹³	N	OEM location	[TBD]
CF-4	Fire Well #1	FireStation	Wells	In between 327 & 335 Factory Road, Cedarville		N/A	N	3,100 gallon holding tank	[TBD]
CF-5	Fire Well #2	FireStation	Wells	30 Maple Avenue, Cedarville	CF-3	N/A	N		[TBD]
CF-6	Fire Well #3	FireStation	Wells	288 Co-Op Drive, Cedarville		N/A	N	Private owner	[TBD]
CF-7	Fire Well #4	FireStation	Wells	Between 784 & 796 Ramah Road, Cedarville		N/A	N		[TBD]
CF-8	Lawrence Township EMS	EMS	Municipal Stations	357 Main Street, Cedarville	CF-1	N	N		[TBD]

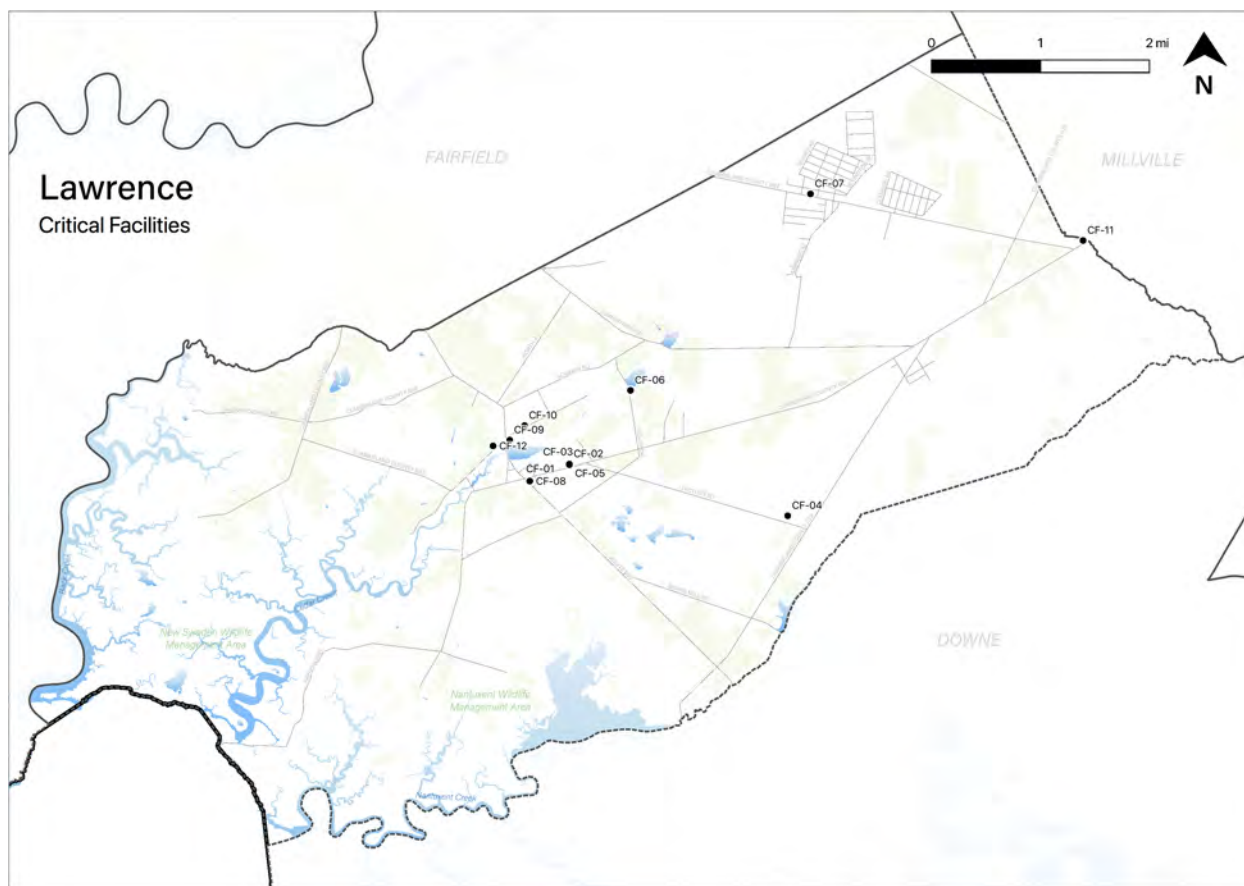
¹² Critical facility definitions and considerations [will be] described in *Section 3: Hazard Identification and Risk Assessment* of the CC HMPU Base Plan.

¹³ Shelter of last resort.

Part 2: Participation

CF #	Name	Type	Sub-Type	Address	Co-located CF #	Shelter (Y/N)	Generator (Y/N)	Comments	Mitigation Measure #
CF-9	Lawrence Township Public Works	Public Works	Combined Administrative Office, Maintenance / Work Area, Equipment / Material Storage, and Fueling Station	32 Maple Avenue, Cedarville	CF-1	N	Y	Back-up emergency power provided by generator located at Station 17 (CF-3)	[TBD]
CF-10	Myron L. Powell Elementary School	Schools	Public Schools	225 Main Street, Cedarville		N	Y		[TBD]
CF-11	No More Tears Childcare	Vulnerable Populations Facilities	Private Child Day Care	3006 Cedarville Road, Millville		N	N		[TBD]
CF-12	Lawrence Township Senior Center	Vulnerable Populations Facilities	Senior Centers	14 Mulford Avenue, Cedarville		N ¹¹	Y		[TBD]

Figure 9-4: Lawrence Township Critical Facilities



Note: All mapping corresponding to results described in Parts 3.3 through 3.5 can be viewed in .pdf format at: https://www.dropbox.com/sh/oxbppirgeu1airu/AABdDU_uGCyPAIJ_4WSsOxL0a?dl=0

Part 3.4: Hazard Exposure Assessment

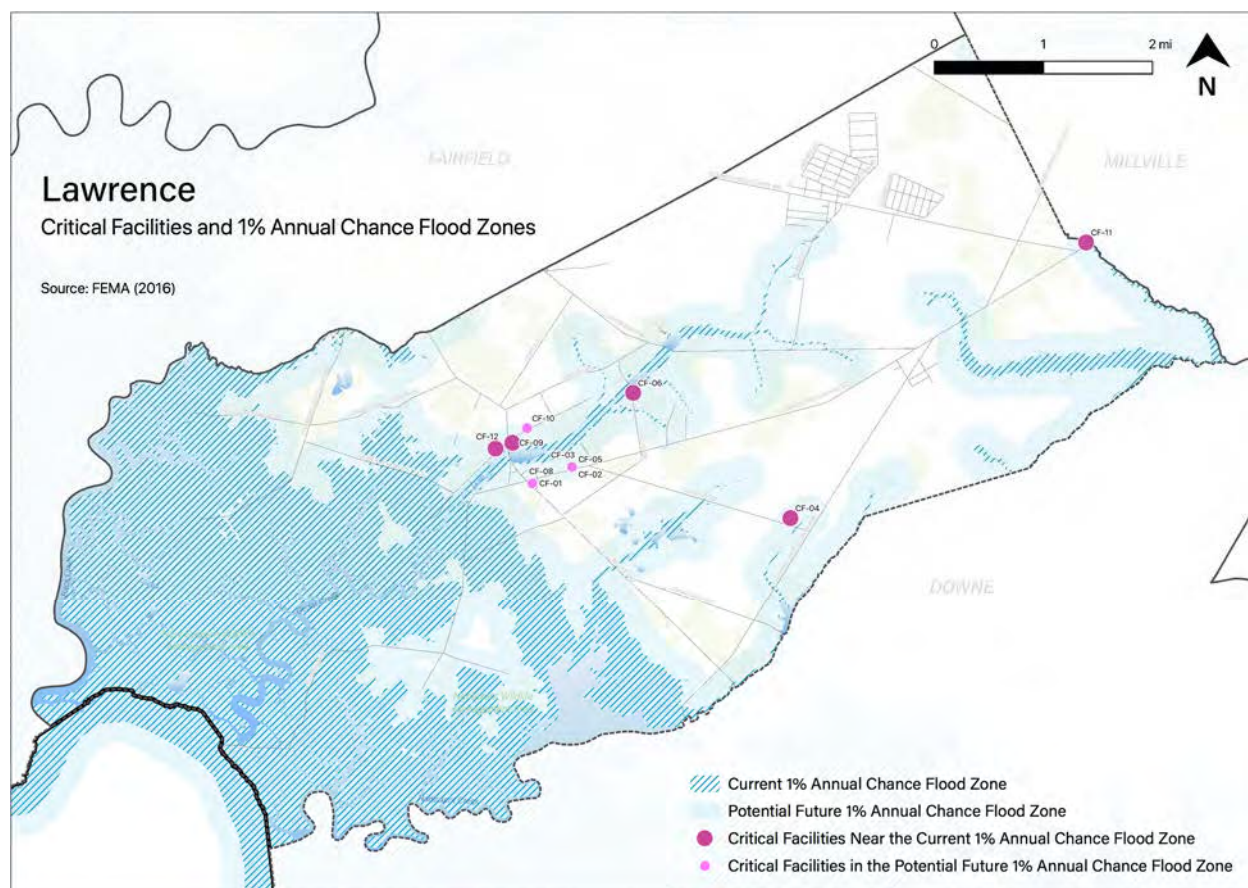
Hazard exposure assessments [will be completed] for the twelve (12) natural hazards identified in the CC HMPU Base Plan¹⁴.

Key results for Lawrence Township are depicted in the following.

Mapping: Figure 9-5 is illustrative of the type of mapping available as a result of the hazard exposure assessment. This figure shows critical facilities that are located in or near (i.e., within 500 feet) the 1% annual flood zone on FEMA's Flood Insurance Rate Maps (FIRMs) or within a potential future 1% annual chance flood zone (i.e., within 1,000 feet).

¹⁴ Hazard profiles [will be] included for all twelve natural hazards in *Section 3: Hazard Identification and Risk Assessment* of the CC HMPU Base Plan.

Figure 9-5: Lawrence Township Critical Facilities and 1% Annual Chance Flood Zone



Mapping results are available for the following hazards (where applicable for individual jurisdictions):

- Coastal Erosion & Sea Level Rise
- Dam Failure [pending data from NJDEP]
- Earthquake
- Extreme High Temperature
- Flood – per FEMA FIRM mapping
- Flood - per National Flood Insurance Program data [pending data from FEMA Region II]
- Geologic Hazards
- High Wind and Severe Weather (heavy summer rains and winter snow loads)
- Levee Failure [pending data from NJDEP]
- Wildfire

Tabulations: Selected data culled from the hazard exposure assessment process is displayed in the following tables:

- Table 9-5 indicates hazard exposure for general building stock
- Table 9-6 indicates hazard exposure for critical facilities

Part 3: Hazard Identification and Risk Assessment

Table 9-5: Lawrence Township General Building Stock Hazard Exposure

Hazard	Number of Exposed Buildings	Percent of Total Buildings in the Jurisdiction	Value of Exposed Buildings	Percent of Total Value in the Jurisdiction
Coastal Erosion ¹⁵	1	-	no data	-
Sea Level Rise - 3 feet increase	88	4%	\$4,175,800	1.55%
Flood - Within 1 % Annual Chance Zone	111	5%	\$5,830,500	2%
Flood - Near (within 500 feet) of 1% Annual Chance Zone	436	20%	\$40,775,100	15%
Earthquake – Structure built before 1927 ¹⁶	411	23%	\$46,357,400	19%
High Winds / Severe Weather – Structure built before 1975	828	47%	\$92,800,300	38%
Wildfire – Composite score > 2.5 ¹⁷	79	3.6%	\$10,312,400	3.8%

Table 9-6: Lawrence Township Critical Facilities Hazard Exposure¹⁸

Hazard	Number of Critical Facilities	CF #s
Coastal Erosion	None	N/A
Sea Level Rise	None	N/A
Flood - Within 1 % Annual Chance Zone	None	N/A
Flood - Near (within 500 feet) of 1% Annual Chance Zone	5	CF-04, CF-06, CF-09, CF-11, CF-12
Flood – Future potential (within 1,000 feet) 1% Annual Chance Zone	6	CF-01, CF-02, CF-03, CF-05, CF-08, CF-10
Wildfire	10	CF-01, CF-02, CF-03, CF-04, CF-05, CF-07, CF-08, CF-09, CF-11, CF-12

In addition, all critical facilities in Cumberland County are exposed to the following hazards and potentially subject to power outages, and structural and/or contents damage:

- Earthquake
- Extreme Temperatures
- Severe Weather – Summer (including heavy rains)
- Severe Weather – Winter (including heavy snow loads)

¹⁵ All supporting data for Coastal Erosion, Sea Level Rise (3-foot rise), Flood (all) can be viewed at https://docs.google.com/spreadsheets/d/1fcN5hL3Jz4X7mldFyKs6wol6J6IAR9bSsvJPIqE_A0Q/edit?usp=sharing

¹⁶ All supporting data for Earthquake, High Winds, and Severe Weather can be viewed at <https://docs.google.com/spreadsheets/d/1Zx1LZwKQ8esqdv4c9hbbSZurtMjH4UITQWJY1LrZezc/edit?usp=sharing>

¹⁷ All supporting data for Wildfire can be viewed at https://docs.google.com/spreadsheets/d/1JAbfd3A-eCHI93pZFaPVuM_H2yvuUzeHCmoijv-oxsw/edit?usp=sharing

¹⁸ All supporting data for critical facility hazard exposure can be viewed at <https://docs.google.com/spreadsheets/d/1MPLiOANm7fHoyKuxyWqyang26LTSPayTxJvLmK5IGPg/edit?usp=sharing>

Part 3: Hazard Identification and Risk Assessment

For Lawrence Township, Table 9-8 includes selected metrics where social vulnerability considerations are notably higher when compared with all national census tracts:

Table 9-8: Lawrence Township Social Vulnerability Considerations²¹

Metric	Percentile
Percentage of persons: Living in mobile homes	87 th
Percentage of persons: Living in group quarters	82 nd
Percentage of persons: With a disability	80 th

In addition, the percentage of residents earning below poverty level = 14.4% (compared with the average in New Jersey of 10.4%).

Part 3.6: Observations

- Outreach and guidance should be provided for residents, business owners, and property owners for:
 - Properties in or near coastal erosion, sea level rise, flood zones or wildfire hazard areas.
 - Older buildings to help evaluate potential risk of damage due to hazards such as Earthquake, High Winds, and Severe Winter Weather (i.e., heavy snow loads).
- All critical facilities are potentially vulnerable to Earthquake, High Winds, and Severe Weather (heavy rains in summer and snow loads in winter).
- A few critical facilities are potentially vulnerable to Flood and Wildfire and will be identified as priorities for follow-up critical facility field evaluations.
- Priority for follow-up should also be focused on critical facilities housing vulnerable populations related to Extreme Temperature and Severe Weather hazards. For example, determining and documenting (cross referencing EOP) how residents will be moved to facilities providing shelter including cooling and warming centers (all of which would need adequate back-up power and hardening).

²¹ All supporting data for SVI can be viewed at https://docs.google.com/spreadsheets/d/10zb_Qlg2CqGxb45_fcKiP46swaC16-fORxYTIOiAKP0/edit#gid=1481479799

Part 3: Hazard Identification and Risk Assessment

Part 3.7: Hazard Priorities [review / confirm or revise highlighted entries]

As a key step in the Hazard Identification and Risk Assessment (HIRA) process, the twelve (12) natural hazards identified in the CC HMPU Base Plan were discussed during the Municipal Working Group Work Sessions and the relative priority of these hazards was identified.

Based on their personal experience as well as the results of the HIRA, the Municipal Working Group rated the hazards as follows:

High Priority

- Coastal Erosion and Sea Level Rise
- Wildfire

Moderate Priority

- Dam Failure
- Flood
- High Wind
- Levee Failure
- Severe Weather – Summer

Low Priority

- Drought
- Earthquake
- Extreme Temperature: Cold & Hot
- Severe Storm – Winter Weather

One additional hazard was identified but was not considered applicable to the municipality:

- Geologic Hazards

Part 4: Mitigation Measures

Part 4: Mitigation Measures

Part 4 includes six subparts:

- *Part 4.1: Mitigation Goals and Strategy*
- *Part 4.2: NJ4 HMP Mitigation Measures*
- *Part 4.3: Municipal Mitigation Measures – Identification*
- *Part 4.4: Municipal Mitigation Measures – Implementation*
- *Part 4.5: Multi-Jurisdictional Mitigation Measures*
- *Part 4.6: Authorities, Policies, Programs, Resources, and Plan Integration*

Part 4.1: Mitigation Goals and Strategy [review / confirm or revise highlighted entries]

Goals were originally established by the SDVR Hazard Mitigation Steering Committee and validated by the four County Hazard Mitigation Working Groups in response to risk and capability assessment results.

As part of the NJ4 HMP plan update process, these goals were reviewed and edited by the Municipal Working Groups for use in the Municipal Appendices. In addition, the Municipal Working Groups for the CC HMPU reviewed and [reaffirmed/edited] these goals for continued use in the Appendices.

All mitigation measures in the Municipal Appendix are related to at least one of these four goal statements.

- **Goal 1: Improve education and outreach efforts** regarding potential risk of natural hazards and appropriate mitigation measures that can be used to reduce risk (including programs, activities, and projects)
- **Goal 2: Improve data collection, use, and sharing** to reduce the risk of natural hazards
- **Goal 3: Improve capabilities and coordination** at municipal, county, and state levels to plan and implement hazard mitigation measures
- **Goal 4: Plan and implement projects** to mitigate identified natural hazards, known problems, and areas of concern

Based on these goals, the results of the HIRA, and experience of participants in the plan update process, the Municipal Working Group identified an overarching strategy for mitigation:

- Identify and address known problems or areas of concern for critical facilities and vulnerable populations
- Provide opportunities for residents and property owners to access available information about risk reduction and mitigation measures, in particular for Repetitive Flood Loss properties
- Institutionalize hazard mitigation into municipal activities and programs through regular interactions of the Municipal Working Group and integration of related regulatory programs and planning initiatives
- Stay informed regarding changing conditions and related improvements in hazard and risk data due to future natural hazard events and increasing understanding of the effects of climate change and use the information as part of periodic evaluations of and refinements or additions to the municipality's mitigation program

The mitigation measures [to be] described in Parts 4.3 through 4.5 of the Municipal Appendix reflect this strategy.

Part 4: Mitigation Measures

Part 4.2: NJ4 HMP Mitigation Measures

Known problems and areas of concern were the basis for mitigation measures identified in the NJ4 HMP. In cases where these problems and concerns still exist at the time of the CC HMPU, the related NJ4 HMP mitigation measures **[will be]** candidates for inclusion in the Municipal Appendix.

Table 9-9 identifies the status of mitigation measures included in the NJ4 HMP. These entries were based on information provided by the Municipal Working Group. In some cases, the NJ4 HMP mitigation measures **[will be]** carried over as part of the Municipal Appendix as **[will be]** indicated in the “Comments” column and the far right-hand column of Table 9-9.

In addition to reviewing all entries for accuracy, need to provide confirmation and/or information for all highlighted entries.

Table 9-9: Status of Lawrence Township NJ4 HMP Mitigation Measures

Mitigation Action, Program, or Project	Status	Comments	Mitigation Measure # ²²²³
M-1: Identify and pursue outreach and education opportunities to inform municipal residents, businesses, and property owners.	Work-in-progress	Work-in-progress included: <ul style="list-style-type: none"> • The Township website is used for emergency notifications. In addition, the Township newsletter is used for information regarding flood hazards. • Township staff have regular discussions regarding pending and on-going projects. • On-site surveys were conducted, including: <ul style="list-style-type: none"> ▫ CF #s 1 & 2 (Cedarville Fire Department and Road Department,) Identified need to harden exterior of building (Windows) by installing storm shutters. Lawrence Township is hoping to do this within 3 years. ▫ CF #s 3 & 4 (LT EMS & LT municipal building) These 2 buildings are attached to form 1 large building. Identified the need for a back-up emergency power generator to energize both buildings. This is planned to be installed in the year 2022. Similar walk thru inspections are scheduled once a year to look for vulnerabilities.	To be carried over as part of M-1
M-2: Prioritize critical facilities and complete site and facility surveys to identify vulnerabilities and potential mitigation measures.			
M-3: Prioritize recurrent drainage problem areas and initiate data collection to track unreimbursed damages and related response and recovery expenses.			
M-4: Conduct regular Municipal Working Group meetings.			
M-5: Install permanent backup emergency power generator at Lawrence Township Municipal Building / EMS at 357 Main Street (CF-1 / CF-8).	Work-in-progress	Purchase and installation are scheduled for 2022 as part of CIP.	To be carried over as [# TBD]
M-6: Install permanent backup emergency power generator at Cedarville Fire Department / Lawrence Township EOC / Fire Well #2 (CF-2 / CF-3 / CF-5).	Completed	Generator was installed in 2016 by [identify responsible party(ies), and funding source]	

²² Detailed information for identification and implementation of municipal (M-#) mitigation measures **[will be included]** in Tables 9-10 and 8-11.

²³ Detailed information for identification and implementation of multi-jurisdictional (MJ-#) mitigation measures **[will be included]** in Table 9-12.

Part 4: Mitigation Measures

Mitigation Action, Program, or Project	Status	Comments	Mitigation Measure # ²²²³
M-7: Install permanent backup emergency power generator at Fire Well #4 (CF-7).	No progress, lack of funding		To be carried over as [# TBD]
M-8: Install permanent backup emergency power generator at Public Works facility (CF-9).	Completed	Generator was installed in 2018 by [identify responsible party(ies), and funding source]	
M-9: Upgrade permanent backup emergency power generator at Myron L. Powell Elementary School (CF-10).	Completed	[identify completion date, responsible party(ies), and funding source TBD]	
M-10: Risk assessment of Cedarville Lake Dam.	No progress	Identified as more appropriately considered as a multi-jurisdictional measure	To be carried over as multi-jurisdictional mitigation measure [# TBD]
M-11: Elevate New Road where it crosses Fresh Creek.	Completed	Road elevated and repaved and sluice and dikes repaired in 2019. [identify responsible party(ies), and funding source]	
M-12: Address identified Repetitive Loss Properties to include homes with flood issues in the Bay Point Community area.	Work-in-progress	Acquisition of most properties (exception of two homes) completed in 2014 through NJ Blue Acres.	To be carried over as [# TBD]
M-13: Harden / retrofit Fire Station / EOC to include upgrades to windows, storm shutters, and doors (CF-2 / CF-3).	No progress, lack of funding		To be carried over as [# TBD]
M-14: Harden / retrofit Lawrence Township Senior Center to include upgrades to windows (CF-12).	No progress, lack of funding		To be carried over as [# TBD]
M-15: Risk assessment study to determine retaining solution for levee Bay Point Road (road lower than the dikes).	No progress	Project may not be justifiable. Only a problem with bay intrusion on one historic occasion, therefore small risk due to limited numbers of properties (n=3) with only one permanent resident versus high cost of available solutions.	To be carried over as [# TBD]
M-16: Widen DeCarlo Trac fire lanes / roadway to allow for emergency vehicle access in wooded areas.	Completed	Roadways widened, brush removed and continually maintained by Township Road Department.	
MJ-1: Alleviate flooding at County Route 653 (Bowers Creek Road), east side of White Bridge.	No progress		To be carried over as multi-jurisdictional mitigation measure [# TBD]

Part 4: Mitigation Measures

Part 4.3: Municipal Mitigation Measures – Identification

Table 9-10 [will include] the list of mitigation measures that are considered the responsibility of the municipality. These mitigation measures:

- Reflect the goals and strategy identified in Part 4.1
- Include projects carried over from NJ4 HMP as detailed in Part 4.2
- Include new projects, programs or activities identified by the Municipal Working Groups including measures to address known problems or areas of concern for critical facilities and vulnerable populations
- Address Repetitive Flood Loss (RL) and Severe Repetitive Flood Loss Properties (SRL)²⁴ if applicable

Table 9-10 [will include]:

- Brief description of the mitigation action, program, or project
- Hazard(s) addressed by the measure
- Relevant goal(s) addressed by the measure
- Whether the measure pertains to existing or new structures or both

Note: Mitigation measures with discrete locations [will be] shown in Figure 9-7.

Table 9-10: Lawrence Township Municipal Mitigation Measures Identification

#	Mitigation Action, Program, or Project	Hazard(s)	Goal (s)	Existing or New Structures
M-1	<p><u>Municipal Mitigation Program</u> – including sustained efforts in cooperation with Cumberland County Office of Emergency Management (CC OEM) to:</p> <ul style="list-style-type: none"> ▪ Conduct outreach and education for residents, businesses, and property owners ▪ Complete critical facility field evaluations to identify potential vulnerabilities and mitigation measures ▪ Compile relevant data regarding hazard impacts ▪ Support regular interactions of the Municipal Working Group ▪ Seek integration of hazard mitigation with other parallel planning initiatives 	All	All	All

²⁴ Section 3: Hazard Identification and Risk Assessment of the CC HMPU Base Plan [will include] a description of RL and SRL properties.

Part 4: Mitigation Measures

Part 4.4: Municipal Mitigation Measures – Implementation

Table 9-11 **will include** information identified by the Municipal Working Group:

- Part(ies) responsible for following up with implementation of the measure
- Priority for implementation considering a range of criteria²⁵
- Project Type to help determine funding options and implementation mechanisms at the municipal level²⁶
- Estimated Cost, including estimates provided by the Municipal Working Group or approximate ranges for projects that are in early stages of development
- Target Date, indicating desired completion dates assuming availability of funding
- Next step(s) anticipated to implement the identified mitigation measures at the municipal level

Table 9-11: Lawrence Township Municipal Mitigation Measures Implementation

#	Mitigation Action, Program, or Project	Responsible Part(ies)	Priority	Project Type	Estimated Cost (\$)	Target Date	Next Step(s)
M-1	Municipal Mitigation Program	Office of Emergency Management	High	Program	Staff Time	On-going, sustained effort	<ul style="list-style-type: none"> ▪ Identify outreach and education objectives and methods (working with CC OEM) ▪ Set priorities (if necessary) and initiate critical facility field assessments ▪ Identify schedule for plan updates (for plan integration efforts)

²⁵ Section 4: Mitigation Measures of the CC HMPU Base Plan **will include** a description of evaluation criteria considered by the Municipal Working Group.

²⁶ Section 4: Mitigation Measures of the CC HMPU Base Plan **will include** a description of project types and related information regarding funding options and implementation mechanisms.

Part 4: Mitigation Measures

Part 4.5: Multi-Jurisdictional Mitigation Measures

During the Municipal Working Group Work Sessions, the Municipal Working Group [will identify] some NJ4 HMP mitigation measures that need to be carried over, as well as new areas of concern, as mitigation measures where implementation requires participation or leadership from other levels of government, including county, state, and federal agencies. These multi-jurisdictional mitigation measures [will be] included in Table 9-12.

Section 4: Mitigation Measures of the CC HMPU Base Plan [will describe] multi-jurisdictional implementation strategies in detail. Section 4 [will identify] multi-jurisdictional mitigation measures that Municipal Working Groups believe are partly or wholly the responsibility of County agencies. These measures [will be] referred to the County Working Group for consideration. As part of the mitigation measures in the County Appendix to the NJ4 HMP Regional Hazard Mitigation Plan, the County Working Group will be working with the municipalities to identify:

- Specific responsibilities amongst different level(s) of government to address these problem areas
- Mitigation measures or related projects which may address the described problem areas that are already acknowledged as County responsibilities including identifying the appropriate County agency or department taking the lead role and status of implementing these mitigation measures
- Which, if any, additional mitigation measures the member agencies of the County Working Group will assume responsibility to implement

Note: Multi-jurisdictional mitigation measures with discrete locations [will be] shown in Figure 9-7.

Table 9-12: Lawrence Township Multi-Jurisdictional Mitigation Measures

#	Problem Description	Hazard(s) Addressed	Goal Addressed	Applies to Existing or New Structures	Potential Partners	Priority

Figure 9-7: Lawrence Township Mitigation Project Locations

Preliminary Draft

Part 4: Mitigation Measures

Part 4.6: Authorities, Policies, Programs, Resources, and Plan Integration

Part 4.6 includes three (3) subparts:

- Authorities, Policies, and Programs - Cross referencing relevant information and recommendations in the CC HMPU Base Plan regarding existing authorities, policies, and programs in the region and specific information about the jurisdiction's participation and continued compliance in the National Flood Insurance Program (NFIP)
- Capabilities and Coordination - Cross referencing relevant information and recommendations in the CC HMPU Base Plan regarding improving capabilities and coordination at the municipal level and specific information about the jurisdiction's available resources
- Plan Review and Integration – Identifying plans and programs included in the development of Plan Integration recommendations in the CC HMPU Base Plan

Authorities, Policies, and Programs

Section 1.3: Existing Authorities, Policies, Programs, and Resources of the CC HMPU Base Plan **will summarize** relevant authorities, policies, and programs related to hazard mitigation in the County including the NFIP.

Continuing municipal participation in the NFIP as part of the implementation of the CC HMPU by the municipality, includes:

- Involvement of Floodplain Manager / Administrator during the CC HMPU implementation process
- Commitment to adopt updated FIRMs and evaluate / update the municipality's Flood Management Plan and/or Ordinance as appropriate per recommendations **to be included** in Section 4.6 of the CC HMPU Base Plan

Capabilities and Coordination

The update of the NJ4 HMP **will include** reexamining municipal hazard mitigation capabilities; potential for improving capabilities and coordination within and between jurisdictions; and plan integration considerations, including:

- *Section 1.3: Existing Authorities, Policies, Programs, and Resources* of the CC HMPU Base Plan **will include** summary statements regarding county and municipal resources and the impact of resource limitations on the overall approach to the CC HMPU mitigation strategies.
- *Section 4: Mitigation Measures* of the CC HMPU Base Plan **will include** summary observations and recommendations concerning:
 - Hazard mitigation planning and mitigation measure implementation capabilities and coordination at the county and municipal levels
 - Coordination within municipal governments, between municipal governments and their communities, and between municipal, county, and state agencies responsible for hazard mitigation

Part 4: Mitigation Measures

Plan Review and Integration

Specific documents obtained during the plan update process from the Municipal Working Group include:

- Emergency Operations Plan – Base Plan (2017) – due to be updated in October 2021
- Floodplain Management Ordinance
- Master Plan (2021)
- Development Regulations Ordinance (2021)
- Municipal Stormwater Management Ordinance (2021)
- Cumberland County Delaware Bayshore Recovery Plan (2013)

Note: Need to identify status of Flood Management Ordinance and determine need for updating referenced FIRMs and/or ordinance content. Most recent one passed in 2016.

Table BP.4-4 in Section 4.6: Plan Review and Integration of the CC HMPU Base Plan:

- [Will identify] the primary plans and documents collected from each of the participating municipalities.
- [Will include] the results of reviewing the primary plans and documents to determine the extent to which these documents reflect up-to-date hazard risk and mitigation.
- [Will include] recommendations for integrating the results of the CC HMPU, including hazard mitigation data, goals, measures, and/or recommendations with existing plans and programs at the municipal level that are relevant to all participating municipalities and incorporated by reference in each of the jurisdiction-specific Appendices including:
 - Hazard Assessments
 - Emergency Operations Plans
 - Floodplain Management Ordinances
 - Master Plans and Reexamination Reports
 - Other plans and documents

The plan maintenance process [will articulate and specify] a commitment to review and follow these recommendations during future scheduled updates of these various documents as considered appropriate by the Working Group and the governing body of the municipality.

Attachment A: Public Review Comments

Public review comments [will be] recorded during the public review of the Lawrence Township Preliminary Draft and Draft versions of the Municipal Appendix on [dates to be determined]:

Table 9.A-1: Public Review Comments

Comment Date and Time	Comment	Response

Preliminary Draft

Attachment B: Adoption Resolution

Following this page [will be] the Adoption Resolution for the Lawrence Township Municipal Appendix as approved by the Lawrence Township Committee.

Preliminary Draft

Attachment C: Approval Letter

Following this page [will be] the Approval Letter for the Lawrence Township Municipal Appendix.

Preliminary Draft