



Cumberland County Multi-Hazard Mitigation Plan Update
Participating Jurisdiction Appendices

Appendix 11
Millville City, New Jersey

Preliminary Draft

September 7, 2021

Notes to Preliminary Draft Reviewers

This Preliminary Draft of the Millville City Appendix to the Cumberland County Multi-Hazard Mitigation Plan Update (CC HMPU) includes:

Updated tables containing information available as of September 7th for the community's:

- Working Group
- Critical Facilities
- Mitigation Measures included in the 2016 Mitigation Plan for Four New Jersey Counties (NJ4 HMP)
- Plan Review and Integration document status

In addition, the Preliminary Draft contains:

- Preliminary Hazard Identification and Risk Assessment (HIRA) Update – including mapping and data tabulations regarding vulnerability to natural hazards and social vulnerability considerations
- Hazard Priorities – as determined by the Working Group
- Goals and Strategies

Finally, the Preliminary Draft includes initial lists of proposed Municipal and Multi-Jurisdictional Mitigation Measures to be included in the CC HMPU.

Text highlighted in **yellow** indicates information requested of the community's Working Group as part of this review.

Text highlighted in **blue** indicates information to be provided and/or actions to be taken at a later date.

Please provide any questions, input, or comments to your community's Deputy Emergency Management Coordinator:

William Stadnick, III

William.StadnickIII@millvillenj.gov

This review period will close on Friday, October 1st. However, there will be additional opportunities to participate in the development of the CC HMPU. These opportunities will be identified on the project website (<https://cchmpu21.com>).

Table of Contents

Table of Contents	11-i
Part 1 Overview	11-1
1.1: Cumberland County Multi-Hazard Mitigation Plan Update	11-1
1.2: Millville City Municipal Appendix	11-1
Part 2 Participation	11-2
2.1: Municipal Working Group Participation	11-2
2.2: Public Participation	11-5
Part 3 Hazard Identification and Risk Assessment	11-6
3.1: Profile	11-6
3.2: General Building Stock	11-8
3.3: Critical Facilities	11-9
3.4: Hazard Exposure Assessment	11-16
3.5: Demographic Considerations	11-19
3.6: Observations	11-20
3.7: Hazard Priorities	11-21
Part 4 Mitigation Measures	11-22
4.1: Mitigation Goals and Strategy	11-22
4.2: NJ4 HMP Mitigation Measures	11-23
4.3: Municipal Mitigation Measures – Identification	11-25
4.4: Municipal Mitigation Measures – Implementation	11-26
4.5: Multi-Jurisdictional Mitigation Measures	11-27
4.6: Authorities, Policies, Programs, Resources, and Plan Integration	11-29

Table of Contents

List of Figures

Figure 11-1: Millville City Location Map	11-6
Figure 11-2: Millville City Base Map	11-7
Figure 11-3: Millville City Building Footprints	11-8
Figure 11-4: Millville City Critical Facilities	11-16
Figure 11-5: Millville City Critical Facilities & 1% Annual Chance Flood Zone	11-17
Figure 11-6: Millville City Social Vulnerability Index: Overall Scores	11-19
Figure 11-7: Millville City Mitigation Project Locations	11-28

List of Tables

Table 11-1: Millville City Working Group	11-2
Table 11-2: Public Participation	11-5
Table 11-3: Millville City Buildings per Land Use Type	11-8
Table 11-4: Millville City Critical Facilities Inventory	11-9
Table 11-5: Millville City General Building Stock Hazard Exposure	11-17
Table 11-6: Millville City Critical Facilities Hazard Exposure	11-18
Table 11-7: Millville City General Population Demographics	11-18
Table 11-8: Millville City Social Vulnerability Considerations	11-20
Table 11-9: Status of Millville City NJ4 HMP Mitigation Measures	11-23
Table 11-10: Millville City Municipal Mitigation Measures Identification	11-25
Table 11-11: Millville City Municipal Mitigation Measures Implementation	11-26
Table 11-12: Millville City Multi-Jurisdictional Mitigation Measures	11-27

Attachments

Attachment 11.A: Public Review Comments	11.A-1
Attachment 11.B: Adoption Resolution	11.B-1
Attachment 11.C: Approval Letter	11.C-1

Part 1: Overview

Part 1.1: Cumberland County Multi-Hazard Mitigation Plan Update

The Cumberland County Multi-Hazard Mitigation Plan Update (CC HMPU) incorporates input from all 15 participating jurisdictions in Cumberland County, including Cumberland County and 14 separate municipalities.

The CC HMPU is an update of the Mitigation Plan for Four New Jersey Counties (NJ4 HMP) that was completed by all fifteen jurisdictions in Cumberland County along with over 70 additional jurisdictions from Camden, Gloucester, and Salem Counties. The Cumberland County portions of the NJ4 HMP were adopted by the participating jurisdictions and approved by the Federal Emergency Management Agency in 2016.

The CC HMPU has two main parts:

- Cumberland County Multi-Hazard Mitigation Plan Update, or the “Base Plan”.
- County and Municipal Appendices.

The Base Plan [will include] descriptions and information that is common to all 15 participating jurisdictions organized according to the following three focus areas:

- Planning Process
- Hazard Identification and Risk Assessment
- Mitigation Measures

The County and Municipal Appendices include specific information for these same three focus areas for each of the 15 participating jurisdictions. Detailed tabulations are included in these Municipal Appendices for critical facilities, the status of past mitigation activities, and proposed mitigation measures for each municipality.

Part 1.2: Millville City Municipal Appendix

This Municipal Appendix is focused on Millville City in Cumberland County, New Jersey.

The Millville City Municipal Working Group [will recommend] the Millville City Municipal Appendix for adoption to the Millville City Commission.

The Millville City Commission [will adopt] the Municipal Appendix by resolution (see Attachment B: Adoption Resolution).

Region II of the Federal Emergency Management Agency [will approve] the Municipal Appendix (see Attachment C: Approval Letter).

Part 2: Participation

Part 2.1: Municipal Working Group Participation

Part 2.1 includes:

- *Municipal Working Group members including positions in the community, meetings and work sessions attended, and specific contributions to the Municipal Appendix*
- *Municipal positions and organizations that were invited but were not able to participate in the plan update process*
- *Municipal positions and organizations that have been recommended by the Federal Emergency Management Agency (FEMA) as candidates for participation on Municipal Working Groups but do not exist in the municipality*

Table 11-1 identifies the Municipal Working Group members. As [will be] detailed in *Section 2: Planning Process* of the Base Plan, the Municipal Working Groups are comprised of community representatives who worked to make sure mitigation measures included in the Municipal Appendix addressed the risks faced by residents, businesses, and property owners and reflected the priorities of the community.

Municipal Working Group members reviewed briefing materials and contributed during Work Sessions and Meetings and [will review] the Preliminary Draft and Draft versions of the CC HMPU Base Plan and Appendices. The Working Group will also continue to stay involved during the implementation and maintenance of the CC HMPU.

Due to the on-going COVID-19 pandemic during the plan update process, Working Group meetings were conducted in a variety of ways including virtual meetings. However, when local conditions permitted, in-person meetings were conducted.

Note: Two members of the Working Group also participated in the development of the 2016 NJ4 HMP. These members are indicated with an () following their last names.*

Table 11-1: Millville City Working Group

First Name	Last Name	Department	Position	Project Kick-off Meeting ¹	Round 1 Work Session ²	Round 2 Work Session ³	Working Group Meeting ⁴	Contribution ⁵
Sherman	Taylor *	Office of Emergency Management (OEM)	Coordinator	<input checked="" type="checkbox"/>	<input checked="" type="checkbox"/>			
William	Stadnick, III *	OEM	Deputy Coordinator		<input checked="" type="checkbox"/>			Organized Working Group and Work Sessions.
[provide name]		City Commission	Mayor / Director of Public Safety					
[provide name]		City Commission	Commissioner / Director of Public Affairs					

¹ Project Kickoff Meeting was held on May 20, 2021.

² Round 1 Work Session was held on August 24, 2021.

³ Round 2 Work Session [will be] held on [to be determined].

⁴ Working Group Meeting [will be] held on [to be determined (if applicable)].

⁵ Additional or unusual contributions are noted in the far-right hand column.

Part 2: Participation

First Name	Last Name	Department	Position	Project Kick-off Meeting ¹	Round 1 Work Session ²	Round 2 Work Session ³	Working Group Meeting ⁴	Contribution ⁵
[provide name]		City Commission	Commissioner / Director of Public Works					
Jeanne	Parkinson	Administration	City Clerk / City Administrator		<input checked="" type="checkbox"/>			
John	Wettstein	Fire Department	Captain		<input checked="" type="checkbox"/>			
John	Feltes	Fire Department EMS	EMS Chief		<input checked="" type="checkbox"/>			
Kelly	Soracco	Vineland City Fire Department / Emergency Medical Services	EMS Chief					
Salvador	Gioia	Department of Sewer	Superintendent		<input checked="" type="checkbox"/>			
[provide name]		Department of Water	[provide title]					
Michelle	Nothaft	Engineering Department	Assistant Engineer		<input checked="" type="checkbox"/>			
Yazmin	Moreno	Department of Planning and Zoning	Planner Trainee		<input checked="" type="checkbox"/>			
[provide name]		Construction Department	Construction Official / Floodplain Administrator					
[provide name]		School Board	[provide title]					
[provide name]		Housing Authority	[provide title]					
[provide name]		Chaplain program via Police Department	[provide title]					
[provide name]		Chamber of Commerce	[provide title]					

Part 2: Participation

The following lists candidate positions and organizations within the community that [will be extended invitations to participate] during the development of the Municipal Appendix. These positions and organizations will continue to be extended invitations to participate during subsequent plan implementation and maintenance activities.⁶

- Business Associations (via the Chamber of Commerce)
- Community / Faith-Based Organization(s) (via Chaplain Program through the Police Department)
- Environmental Organizations
- Major Employers
- Healthcare Institutions

⁶ Plan implementation and maintenance activities [will be] described in *Section 4: Mitigation Measures* of the CC HMPU Base Plan.

Part 2: Participation

Part 2.2: Public Participation

Part 2.2 **[will include]** all opportunities provided to the public and interested parties in the municipality to participate during the plan update process.

Table 11-2 **[will identify]** the date, type of involvement, and location (where applicable) for all opportunities provided to the public and interested parties to participate in the development of the plan update.

Table 11-2: Public Participation

Date	Type of Involvement	Location
[insert date link was established]	Link to Project Website ⁷ established and maintained.	[insert municipal website URL]
[insert date meeting was held (if applicable)]	Public meeting conducted with presentation and open discussion.	[insert location]
September 8, 2021	Preliminary Municipal Appendix available for public comment.	Project Website
[insert date link was established]	Notice posted re: Preliminary Municipal Appendix review period with link to Project Website.	[insert municipal website URL]
[date(s) to be determined]	Public outreach via [insert audience(s) and outreach method(s)] .	[insert location(s)]
[date to be determined]	Draft Municipal Appendix [will be] available for public comment.	Project Website
[date to be determined]	Public hearing [will be] conducted regarding the Draft Municipal Appendix providing for open discussion and public comment.	[insert location]

Public comments and input received for the Preliminary Draft and Draft versions of the Municipal Appendix **[will be]**:

- Considered by the Municipal Working Group and **[will be]** incorporated into the Municipal Appendix where appropriate.
- Included in Attachment A to the Municipal Appendix along with a brief explanation of if and how the comments were addressed in the Municipal Appendix.

In addition, the Municipal Appendix **[will be]** adopted as part of a regularly scheduled public meeting (see Attachment B: Adoption Resolution).

Public education and outreach is an on-going mitigation measure included in the Municipal Appendix.⁸ In addition, public participation will continue to be encouraged during subsequent plan implementation and maintenance activities.⁹

⁷ <https://cchmpu21.com/documents>

⁸ See Mitigation Measure M-1 in Part 4 of the Municipal Appendix.

⁹ Public education and outreach **[will be]** described in *Section 4: Mitigation Measures* of the CC HMPU Base Plan.

Part 2: Participation

Part 3: Hazard Identification and Risk Assessment

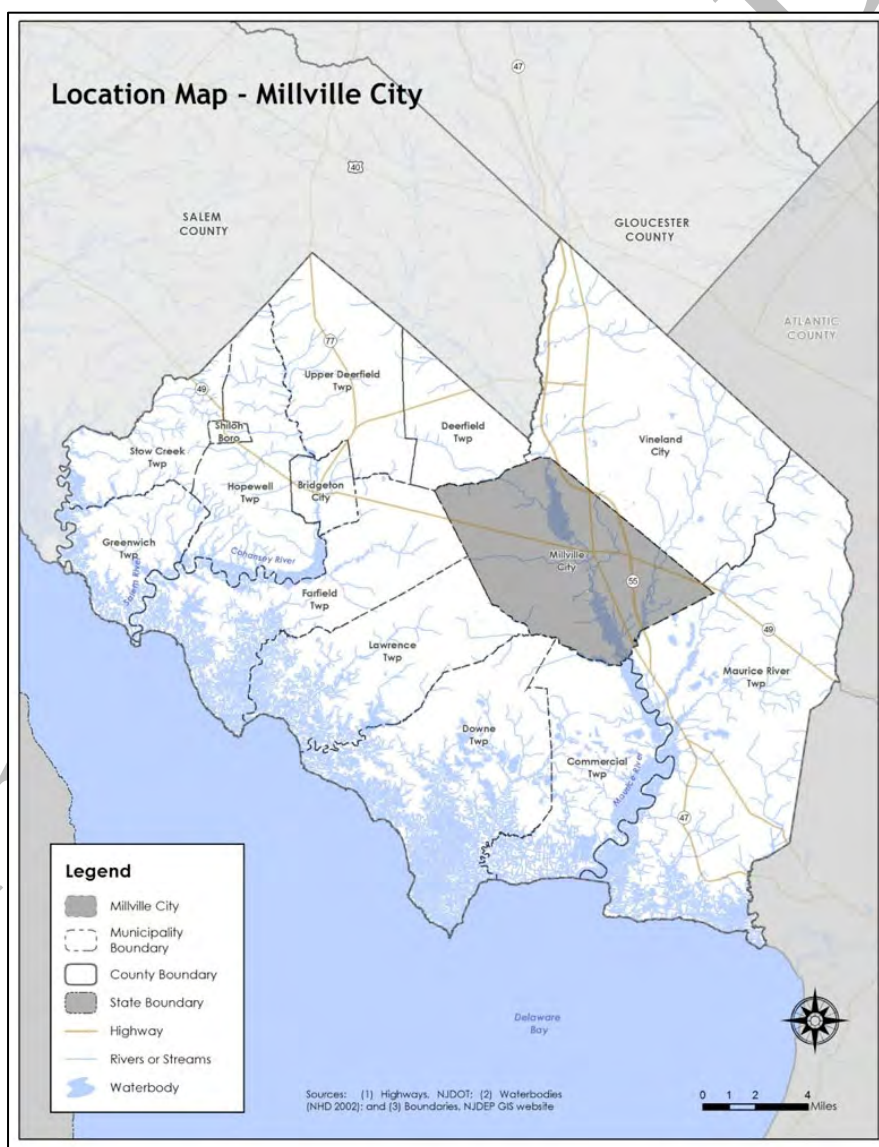
Part 3 includes seven subparts:

- Part 3.1: Profile
- Part 3.2: General Building Stock
- Part 3.3: Critical Facilities
- Part 3.4: Hazard Exposure Assessment
- Part 3.5: Demographic Considerations
- Part 3.6: Observations
- Part 3.7: Hazard Priorities

Part 3.1: Municipal Profile

Millville City is located in the central part of Cumberland County (See Figure 11-1).

Figure 11-1: Millville City Location Map

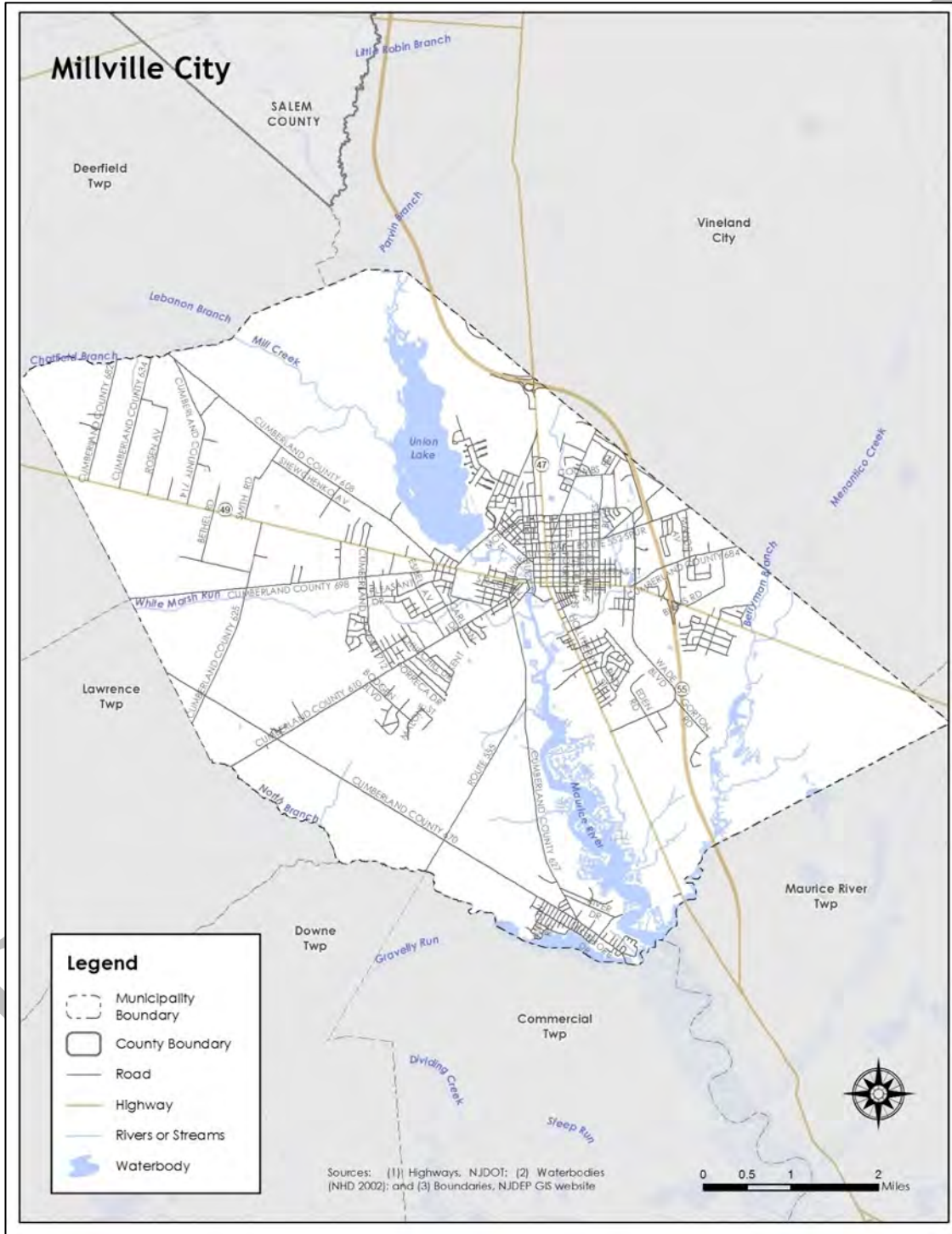


Part 2: Participation

Millville City is an inland municipality with mixed urban and suburban development and the second highest population of the fourteen municipalities in Cumberland County.

Per Figure 11-2, major water bodies include Union Lake and Maurice River. Major transportation routes include State Highway Routes 49 and 55. The land is predominately flat.

Figure 11-2: Millville City Base Map



Part 2: Participation

Part 3.2: General Building Stock

As of 2015, there are 11,709 buildings in Millville City with a total assessed value of improvements of \$1,383,498,200. Figure 11-3 shows the footprints of these buildings.

Figure 11-3: Millville City Building Footprints¹⁰

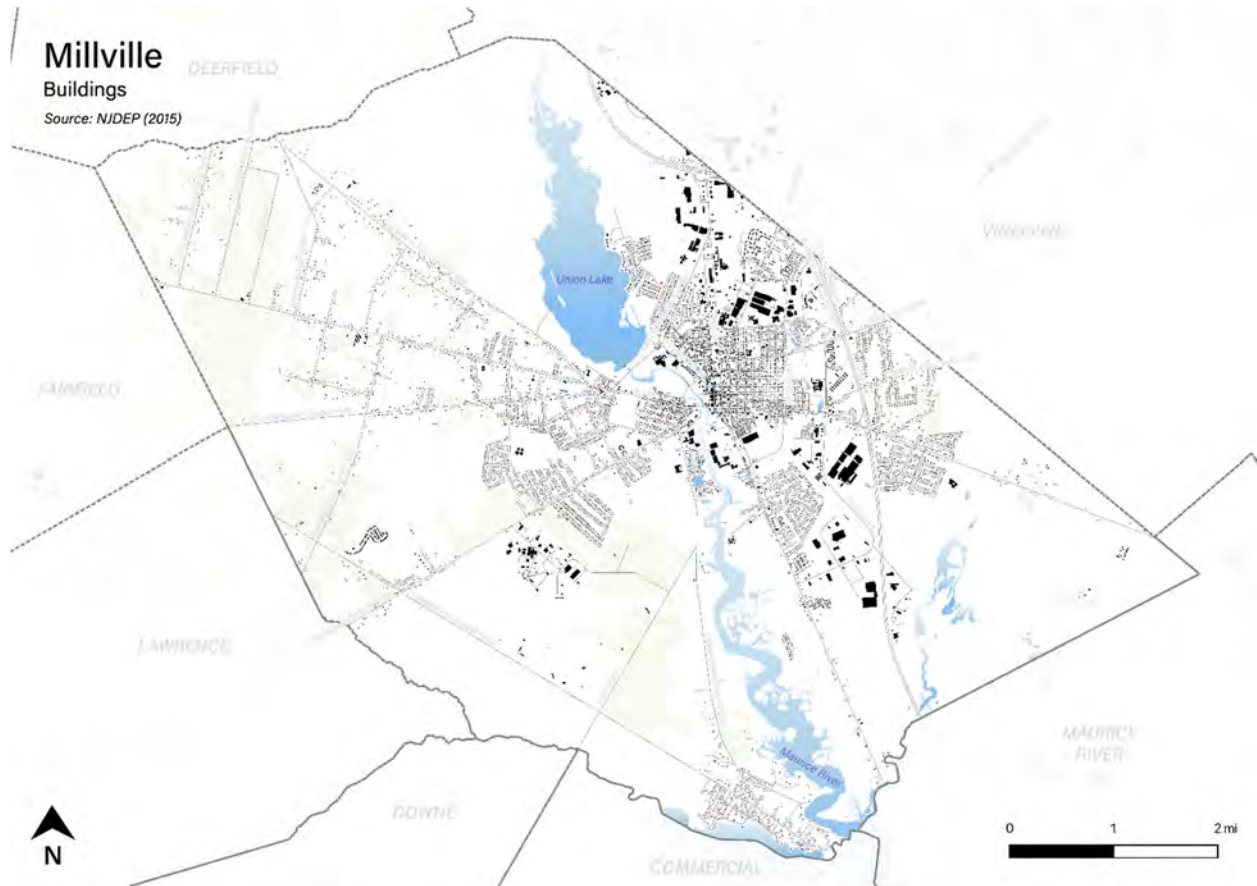


Table 11-3 [will show] the distribution of these structures according to land use distinctions.

Table 11-3: Millville City Buildings per Land Use Type¹¹

Land Use Type	Number of Buildings
Residential	[TBD]
Commercial	[TBD]
Industrial	[TBD]

¹⁰ Building footprint data was isolated from “Impervious Surfaces” data (2015) per <https://gisdata-njdep.opendata.arcgis.com/>. Note: This (map/publication/report) was developed using New Jersey Department of Environmental Protection Geographic Information System digital data, but this secondary product has not been verified by NJDEP and is not state-authorized or endorsed.

¹¹ Land use types [will be] isolated from MOD-IV Parcels and Tax Assessor data composite (2021) per <https://njogis-newjersey.opendata.arcgis.com/documents/parcels-and-mod-iv-of-cumberland-county-nj-shp-download/about> from the New Jersey Office of GIS

Part 2: Participation

Part 3.3: Critical Facilities¹²

As of August 2021, there are seventy (70) critical facilities in Millville City.

Critical facilities are prime candidates for mitigation measures due to important functions staged from these facilities prior to, during, and after natural hazards including emergency services and housing vulnerable populations.

Table 11-4 includes current inventory information for municipal critical facilities **and will include** cross-references to related mitigation measures **to be** identified in Part 4 of the Municipal Appendix. Figure 11.4 shows the location of these critical facilities.

One critical facility has been deleted from the list (CF-65) from the 2016 NJ4 HMP Appendix. In addition, the list from the 2016 NJ4 HMP has been divided into two lists:

- 1. CFs where either no changes have occurred, or changes have occurred and have been identified.*
- 2. CFs where current status was not identified yet and/or additional information is needed.*

*Need to review all information for the critical facilities on the second list and identify if any changes have occurred since 2016 as well as provide information for **highlighted** items.*

In addition, need to add any new critical facilities to the list and provide information for all columns. If there are known problems with any additional critical facilities, provide a brief description as well. For example, "periodic flooding", "roof leaks", "broken doors or windows", i.e., anything that would make the facility non-operational in the event of a natural hazard event.

Table 11-4: Millville City Critical Facilities Inventory

Excerpt List 1 - CFs where no changes have occurred, or changes have occurred and have been identified (n=17).

CF #	Name	Type	Sub-Type	Address	Co-located CF #	Shelter (Y/N)	Generator (Y/N)	Comments	Mitigation Measure #
CF-1	City Hall	Municipal	Administrative Offices	12 South High Street, Millville		N	Y ¹³		[TBD]
CF-2	Emergency Operations Center	EOC	Co-located Facilities	420 Buck Street, Millville		N	Y		[TBD]
CF-3	Fire Station/EMS Station 1	FireStations/EMS	Stations	420 Buck Street, Millville	CF-2	Y ¹⁴	Y		[TBD]

¹² Critical facility definitions and considerations **will be** described in *Section 3: Hazard Identification and Risk Assessment* of the CC HMPU Base Plan.

¹³ Limited to emergency lighting. Upgrade to cover Data Center housed as part of Administrative Offices is funded but not implemented as of October 31, 2014.

¹⁴ Temporary Shelter.

Part 2: Participation

CF #	Name	Type	Sub-Type	Address	Co-located CF #	Shelter (Y/N)	Generator (Y/N)	Comments	Mitigation Measure #
CF-4	EMS Station 2	EMS	Stations	701 Columbia Avenue, Millville		N	N		[TBD]
CF-5	Police Station	Law Enforcement Facilities	Stations	18 South High Street, Millville		N	Y		[TBD]
CF-6	Riggins Oil	Public Works	Fueling Stations	129 East Main Street, Millville		N/A	N ¹⁵	Private Vendor	[TBD]
CF-7	Public Works Yard	Public Works	Combined Administrative Office, Maintenance / Work Area, Equipment / Materials Storage	416 South 15th Street, Millville		N	N ¹⁶		[TBD]
CF-45	Mount Pleasant Elementary School	Schools	Public Schools	100 Carmel Road, Millville		N	N		[TBD]
CF-46	Child Family Center	Schools	Public Schools	1100 Coombs Road, Millville		N	Y ¹⁷		[TBD]
CF-47	Lakeside Middle School	Schools	Public Schools	2 North Sharp Street, Millville		Y ¹⁸	Y ¹⁷		[TBD]
CF-48	Millville Senior High School	Schools	Public Schools	200 Wade Blvd, Millville		Y ¹⁸	Y		[TBD]
CF-49	Holly Heights Elementary School	Schools	Public Schools	2509 East Main Street, Millville		Y ¹⁸	Y ¹⁷		[TBD]
CF-50	Silver Run Elementary School	Schools	Public Schools	301 Silver Run Road, Millville		Y ¹⁸	Y ¹⁷		[TBD]
CF-51	Rieck Avenue Elementary School	Schools	Public Schools	339 Rieck Avenue, Millville		Y ¹⁸	Y ¹⁷		[TBD]
CF-52	Bacon Elementary School	Schools	Public Schools	501 South Third Street, Millville		Y ¹⁸	N		[TBD]

¹⁵ As of October 31, 2014, Riggins Oil does not have a back-up emergency power generator. However, the station at East 2nd Street and Main Street is approved for NJ Quick Connect program. In the event of a power disruption, Riggins will contact NJOEM, and a generator will be provided. Other contingency plans have been identified including pumping gas from Riggins Oil facility in Vineland and sending a tanker with fuel.

¹⁶ New Public Works facility will have hook-ups for portable generator, but no portable generator is currently owned by the City of Millville that is adequate to run this facility.

¹⁷ Millville City school generators typically only operate a percentage of lights to allow egress and walk-in freezers and refrigerators

¹⁸ Certified by the American Red Cross.

Part 2: Participation

CF #	Name	Type	Sub-Type	Address	Co-located CF #	Shelter (Y/N)	Generator (Y/N)	Comments	Mitigation Measure #
CF-53	Memorial High School	Schools	Public Schools	504 East Broad Street, Millville		Y ¹⁸	Y ¹⁷		[TBD]
CF-54	PAL	Municipal	Administrative Offices	700 Archer Street, Millville		N	N		[TBD]

Excerpt List 2 - CFs where current status has not been identified and/or additional information is needed. (n=53).

CF #	Name	Type	Sub-Type	Address	Co-located CF #	Shelter (Y/N)	Generator (Y/N)	Comments	Mitigation Measure #
CF-8	Ware Avenue Water Treatment Plant	Utilities – Water	Water Treatment Plants	101 Ware Avenue, Millville		N/A	[TBD]		[TBD]
CF-9	Bridgeton Pike Water Treatment Plant	Utilities – Water	Water Treatment Plants	1944 West Main Street, Millville		N/A	Y		[TBD]
CF-10	Airport Plant Water Treatment Plant	Utilities – Water	Water Treatment Plants	50 Bogden Boulevard, Millville		N/A	Y		[TBD]
CF-11	“E” Street Water Treatment Plant and Well #17	Utilities – Water	Combined Water Treatment Plant / Wellhead	709 “E” Street, Millville		N/A	Y		[TBD]
CF-12	Geissinger Avenue Water Treatment Plant, Well #18, and Tank	Utilities – Water	Combined Water Treatment Plant / Wellhead / Water Tower	18 Geissinger Avenue, Millville		N/A	Y		[TBD]
CF-13	Orange Street Tank	Utilities – Water	Water Towers	416 Orange Street, Millville		N/A	N ¹⁹		[TBD]
CF-14	Bluebird Lane Tank	Utilities – Water	Water Towers	113 Bluebird Lane, Millville		N/A	N ¹⁹		[TBD]
CF-15	Tower Road Tank	Utilities – Water	Water Towers	1500 Tower Road, Millville		N/A	N ¹⁹		[TBD]
CF-16	Coombs Road Tank	Utilities – Water	Water Towers	2000 Miller Avenue, Millville		N/A	N ¹⁹		[TBD]
CF-17	Buckshutem Road Tank	Utilities – Water	Water Towers	1801 West Buckshutem Road, Millville		N/A	N ¹⁹		[TBD]
CF-18	Airport Well #1	Utilities – Water	Wellheads	Block 125, Lot 5, Millville		N/A		Off Leddon Street	[TBD]

¹⁹ Water tanks are equipment with hook-ups for portable back-up generators capable of providing adequate power to operate monitoring controls

Part 2: Participation

CF #	Name	Type	Sub-Type	Address	Co-located CF #	Shelter (Y/N)	Generator (Y/N)	Comments	Mitigation Measure #
CF-19	Airport Well #2A	Utilities – Water	Wellheads	Block 125, Lot 5, Millville		N/A	N	On Peterson, next to Building #20	[TBD]
CF-20	Airport Well #4	Utilities – Water	Wellheads	Block 125, Lot 5, Millville		N/A	N	Behind big DRBA hangers	[TBD]
CF-21	Well #13A ²⁰	Utilities – Water	Wellheads	Ware Avenue, Block 461, Lot 1, Millville	CF-8	N/A	[TBD]	Along plant driveway	[TBD]
CF-22	Well #14 ¹⁴	Utilities – Water	Wellheads	Ware Avenue, Block 461, Lot 1, Millville	CF-8	N/A	[TBD]	West of plant garage	[TBD]
CF-23	Well #15 ¹⁴	Utilities – Water	Wellheads	Block 462, Lot 7, Millville	CF-8	N/A	[TBD]	North of Babe Ruth Ball field	[TBD]
CF-24	Well #16 ¹⁴	Utilities – Water	Wellheads	Block 462, Lot 7, Millville	CF-8	N/A	[TBD]	At Municipal Building parking lot	[TBD]
CF-25	Airport Taxiway Pump Station	Utilities – Wastewater	Pump Stations / Lift Stations	Leddon Street, Millville		N/A	N	Portable generator required	[TBD]
CF-26	Bogden Boulevard Pump Station	Utilities – Wastewater	Pump Stations / Lift Stations	700 Bogden Boulevard, Millville		N/A	Y	Standby generator available	[TBD]
CF-27	Buck Street Pump Station	Utilities – Wastewater	Pump Stations / Lift Stations	98 Buck Street, Millville		N/A	N	Portable generator required	[TBD]
CF-28	Cumberland Crossing Pump Station	Utilities – Wastewater	Pump Stations / Lift Stations	2201 North 2 nd Street, Millville		N/A	Y	Standby generator available	[TBD]
CF-29	Dividing Creek Pump Station	Utilities – Wastewater	Pump Stations / Lift Stations	2997 Dividing Creek Road, Millville		N/A	Y	Standby generator available	[TBD]
CF-30	Gorton Road Pump Station	Utilities – Wastewater	Pump Stations / Lift Stations	40 Gorton Road, Millville		N/A	N	Bypass connection available, portable generator required	[TBD]
CF-31	High School Pump Station	Utilities – Wastewater	Pump Stations / Lift Stations	1411 East Pine Street, Millville		N/A	Y	Standby generator available	[TBD]
CF-32	Ireland Avenue Pump Station	Utilities – Wastewater	Pump Stations / Lift Stations	618 Ireland Avenue, Millville		N/A	Y	Bypass connection available, standby generator available	[TBD]
CF-33	JFK Boulevard Pump Station	Utilities – Wastewater	Pump Stations / Lift Stations	JFK Boulevard, Millville		N/A	N	Low volume station, no generator required	[TBD]

²⁰ Well #s 13A, 14, 15, and 16 are considered obsolete and will be replaced in operation eventually by Well #18.

Part 2: Participation

CF #	Name	Type	Sub-Type	Address	Co-located CF #	Shelter (Y/N)	Generator (Y/N)	Comments	Mitigation Measure #
CF-34	Lowes Pump Station	Utilities – Wastewater	Pump Stations / Lift Stations	Route 47 / North 2 nd Street, Millville		N/A	Y	Standby generator available	[TBD]
CF-35	Manor Estates Pump Station	Utilities – Wastewater	Pump Stations / Lift Stations	East Broad Street, Millville		N/A	Y	Standby generator available	[TBD]
CF-36	Mistletoe Lane Pump Station	Utilities – Wastewater	Pump Stations / Lift Stations	2508 Mistletoe Lane, Millville		N/A	Y	Bypass connection available, standby generator available	[TBD]
CF-37	Reese Road Pump Station	Utilities – Wastewater	Pump Stations / Lift Stations	South Industrial Park, Millville		N/A	N	Portable generator required	[TBD]
CF-38	Soccer Field Pump Station	Utilities – Wastewater	Pump Stations / Lift Stations	Sharp Street, Millville		N/A	N	Low volume station, no generator required	[TBD]
CF-39	South Second Street Pump Station	Utilities – Wastewater	Pump Stations / Lift Stations	1609 South 2 nd Street, Millville		N/A	Y	Bypass connection available, standby generator available	[TBD]
CF-40	Starling Drive Pump Station	Utilities – Wastewater	Pump Stations / Lift Stations	1220 Starling Drive, Millville		N/A	N	Portable generator required	[TBD]
CF-41	Sunset Drive Pump Station	Utilities – Wastewater	Pump Stations / Lift Stations	30 Sunset Drive, Millville		N/A	N	Portable generator required	[TBD]
CF-42	Ware Avenue Pump Station	Utilities – Wastewater	Pump Stations / Lift Stations	101 Ware Avenue, Millville	CF-8	N/A	N	Low volume station, no generator required	[TBD]
CF-43	West Side Pump Station	Utilities – Wastewater	Pump Stations / Lift Stations	201 Riverside Drive, Millville		N/A	Y	Bypass connection available, standby generator available	[TBD]
CF-44	The Hollow Pump Station	Utilities – Wastewater	Pump Stations / Lift Stations	453 South 2 nd Street, Millville		N/A	N	Low volume station, no generator required	[TBD]
CF-54	R.D. Wood Elementary School	Schools	Public Schools	700 Archer Street, Millville		N	N		[TBD]
CF-55	Millville Public Charter	Schools	Private Schools	1101 Wheaton Avenue, Suite 220, Millville		[TBD]	[TBD]		[TBD]
CF-56	Open Bible Baptist Academy	Schools	Private Schools	2625 East Main Street, Millville		[TBD]	[TBD]		[TBD]

Part 2: Participation

CF #	Name	Type	Sub-Type	Address	Co-located CF #	Shelter (Y/N)	Generator (Y/N)	Comments	Mitigation Measure #
CF-57	Maurice House	Vulnerable Populations Facilities	Private Assisted Living	1719 West Main Street, Millville		Y ²¹	Y ²²		[TBD]
CF-58	Genesis Elder Care	Vulnerable Populations Facilities	Private Nursing Home	54 North Sharp Street, Millville		Y ²¹	Y		[TBD]
CF-59	Hillcrest Manor Estates	Vulnerable Populations Facilities	Private Age-Restricted Housing	1200 North High Street, Millville		[TBD]	[TBD]		[TBD]
CF-60	Millville Day Care Center	Vulnerable Populations Facilities	Private Child Day Care	911 Columbia Avenue, Millville		[TBD]	[TBD]		[TBD]
CF-61	Millville Day Care West	Vulnerable Populations Facilities	Private Child Day Care	1001 Columbia Avenue, Millville		[TBD]	[TBD]		[TBD]
CF-62	Corson Park Day Care and Nursery	Vulnerable Populations Facilities	Private Child Day Care	4 North 12 th Street, Millville		[TBD]	[TBD]		[TBD]
CF-63	First Methodist Church	Vulnerable Populations Facilities	Private Child Day Care	201 North 2 nd Street, Millville		[TBD]	[TBD]		[TBD]
CF-64	Rieck Avenue Country Day Care	Vulnerable Populations Facilities	Private Child Day Care	250 Rieck Avenue, Millville		[TBD]	[TBD]		[TBD]
CF-66	Mary's Little Lambs – Childcare Center	Vulnerable Populations Facilities	Private Child Day Care	1101 Wheaton Avenue, Suite 47, Millville		[TBD]	[TBD]		[TBD]
CF-67	Jaycee Plaza	Vulnerable Populations Facilities	Public Housing	122 East Main Street, Millville		Y ²¹	Y ²³	High-rise, managed by Millville Housing Authority, 90 units	[TBD]
CF-68	Riverview West	Vulnerable Populations Facilities	Public Housing	100 Riverside Drive, Millville		Y ²¹	Y ²³	High-rise, managed by Millville Housing Authority, 98 units	[TBD]

²¹ Shelter-in-place.

²² Limited to emergency lighting.

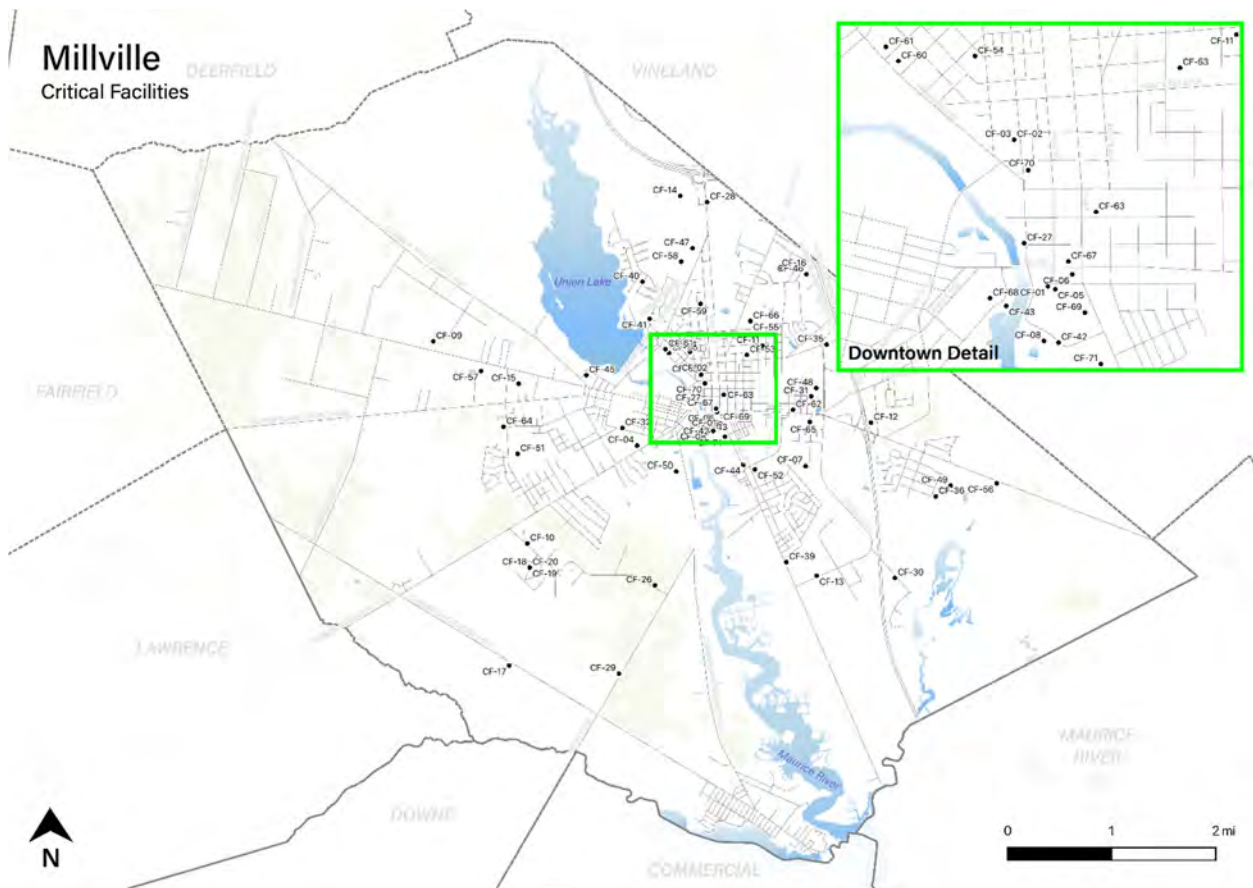
²³ Generator provides back-up emergency power for elevators and 1st floor common areas.

Part 2: Participation

CF #	Name	Type	Sub-Type	Address	Co-located CF #	Shelter (Y/N)	Generator (Y/N)	Comments	Mitigation Measure #
CF-69	Riverside East	Vulnerable Populations Facilities	Public Housing	130 South 2 nd Street, Millville		Y ²¹	Y ²³	High-rise, managed by Millville Housing Authority, 110 units	[TBD]
CF-70	Maurice View Plaza	Vulnerable Populations Facilities	Public Housing	1 East Vine Street, Millville		Y ²¹	Y ²³	Mid-rise, managed by Millville Housing Authority, 29 units	[TBD]
CF-71	Glasstown Residence at River Park	Vulnerable Populations Facilities	Private Age-Restricted Housing	224 South 2 nd Street, Millville		[TBD]	[TBD]	Mid-rise, previously managed by Millville Housing Authority	[TBD]

Preliminary

Figure 11-4: Millville City Critical Facilities



Note: All mapping corresponding to results described in Parts 3.3 through 3.5 can be viewed in .pdf format at: <https://www.dropbox.com/sh/8sosas139bgdaci/AAAYawxpReWcU3z2s2uJcfTPa?dl=0>

Part 3.4: Hazard Exposure Assessment

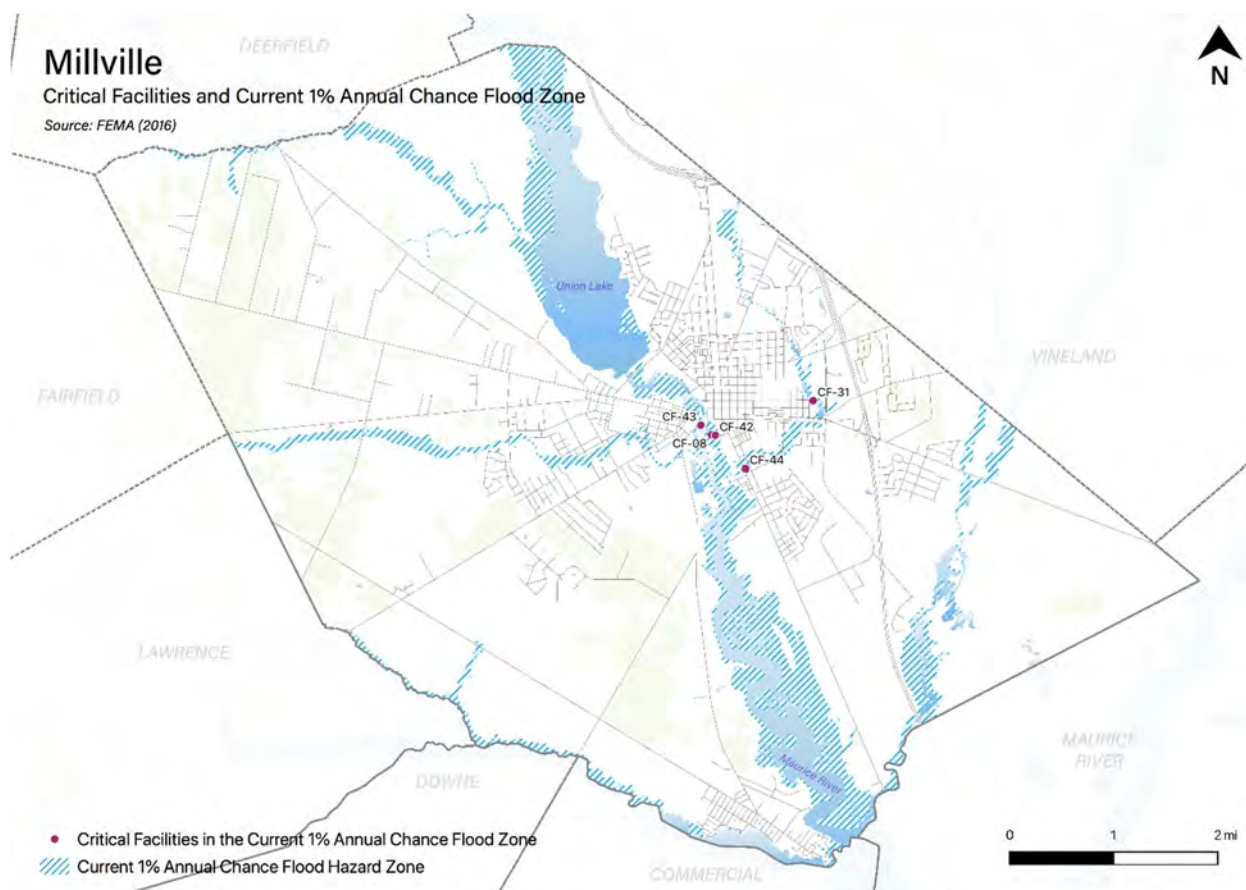
Hazard exposure assessments **will be completed** for the twelve (12) natural hazards identified in the CC HMPU Base Plan²⁴.

Key results for Millville City are depicted in the following.

Mapping: Figure 11-5 is illustrative of the type of mapping available as a result of the hazard exposure assessment. This figure shows critical facilities that are located in or near (i.e., within 500 feet) the 1% annual flood zone on FEMA's Flood Insurance Rate Maps (FIRMs) or within a potential future 1% annual chance flood zone (i.e., within 1,000 feet).

²⁴ Hazard profiles **will be** included for all twelve natural hazards in *Section 3: Hazard Identification and Risk Assessment* of the CC HMPU Base Plan.

Figure 11-5: Millville City Critical Facilities and 1% Annual Chance Flood Zone



Mapping results are available for the following hazards (where applicable for individual jurisdictions):

- Coastal Erosion & Sea Level Rise
- Dam Failure [pending data from NJDEP]
- Earthquake
- Extreme High Temperature
- Flood – per FEMA FIRM mapping
- Flood - per National Flood Insurance Program data [pending data from FEMA Region II]
- Geologic Hazards
- High Wind and Severe Weather (heavy summer rains and winter snow loads)
- Levee Failure [pending data from NJDEP]
- Wildfire

Tabulations: Selected data culled from the hazard exposure assessment process is displayed in the following tables:

- Table 11-5 indicates hazard exposure for general building stock
- Table 11-6 indicates hazard exposure for critical facilities

Part 3: Hazard Identification and Risk Assessment

Table 11-5: Millville City General Building Stock Hazard Exposure

Hazard	Number of Exposed Buildings	Percent of Total Buildings in the Jurisdiction	Value of Exposed Buildings	Percent of Total Value in the Jurisdiction
Coastal Erosion ²⁵	0	N/A	0	N/A
Sea Level Rise - 3 feet increase	27	0.23%	\$733,284	-
Flood - Within 1 % Annual Chance Zone	224	2%	\$30,319,368	2%
Flood - Near (within 500 feet) of 1% Annual Chance Zone	2,476	21%	\$312,463,686	23%
Earthquake – Structure built before 1927 ²⁶	2,392	23%	\$219,306,857	17%
High Winds / Severe Weather – Structure built before 1975	7,240	70%	\$778,996,500	60%
Wildfire – Composite score > 2.5 ²⁷	343	2.92%	\$24,115,650	1.74%

Table 11-6: Millville City Critical Facilities Hazard Exposure²⁸

Hazard	Critical Facilities	CF #s
Coastal Erosion	None	N/A
Sea Level Rise	3	CF-08, CF-42, CF-43
Flood - Within 1 % Annual Chance Zone	5	CF-08, CF-31, CF-42, CF-43, CF-44
Flood - Near (within 500 feet) of 1% Annual Chance Zone	15	CF-01, CF-04, CF-05, CF-06, CF-27, CF-32, CF-41, CF-48, CF-49, CF-52, CF-62, CF-64, CF-68, CF-69, CF-71
Flood – Future potential (within 1,000 feet) 1% Annual Chance Zone	16	CF-02, CF-03, CF-28, CF-35, CF-36, CF-40, CF-45, CF-50, CF-51, CF-55, CF-56, CF-60, CF-61, CF-66, CF-67, CF-70
Wildfire	42	CF-02, CF-03, CF-04, CF-07, CF-09, CF-10, CF-12, CF-13, CF-14, CF-15, CF-16, CF-17, CF-28, CF-29, CF-30, CF-31, CF-32, CF-35, CF-36, CF-39, CF-40, CF-41, CF-44, CF-45, CF-46, CF-47, CF-48, CF-49, CF-51, CF-52, CF-54, CF-56, CF-57, CF-58, CF-59, CF-60, CF-61, CF-62, CF-64, CF-69, CF-70, CF-71

In addition, all critical facilities in Cumberland County are exposed to the following hazards and potentially subject to power outages, and structural and/or contents damage:

- Earthquake
- Extreme Temperatures
- Severe Weather – Summer (including heavy rains)
- Severe Weather – Winter (including heavy snow loads)

²⁵ All supporting data for Coastal Erosion, Sea Level Rise (3-foot rise), Flood (all) can be viewed at https://docs.google.com/spreadsheets/d/1fcN5hL3Jz4X7mldFyKs6wol6J6IAR9bSsvJPiqE_A0Q/edit?usp=sharing

²⁶ All supporting data for Earthquake, High Winds, and Severe Weather can be viewed at <https://docs.google.com/spreadsheets/d/1Zx1LZwKQ8esqdv4c9hbbSZurtMjH4UITQWJY1LrZezc/edit?usp=sharing>

²⁷ All supporting data for Wildfire can be viewed at https://docs.google.com/spreadsheets/d/1JAbfd3A-eCHI93pZFaPVuM_H2yvuUzeHCmoijv-oxsw/edit?usp=sharing

²⁸ All supporting data for critical facility hazard exposure can be viewed at <https://docs.google.com/spreadsheets/d/1MPLiOANm7fHoyKuxyWqyang26LTSPayTxJvLmK5IGPg/edit?usp=sharing>

Part 3: Hazard Identification and Risk Assessment

Part 3.5: Demographic Considerations

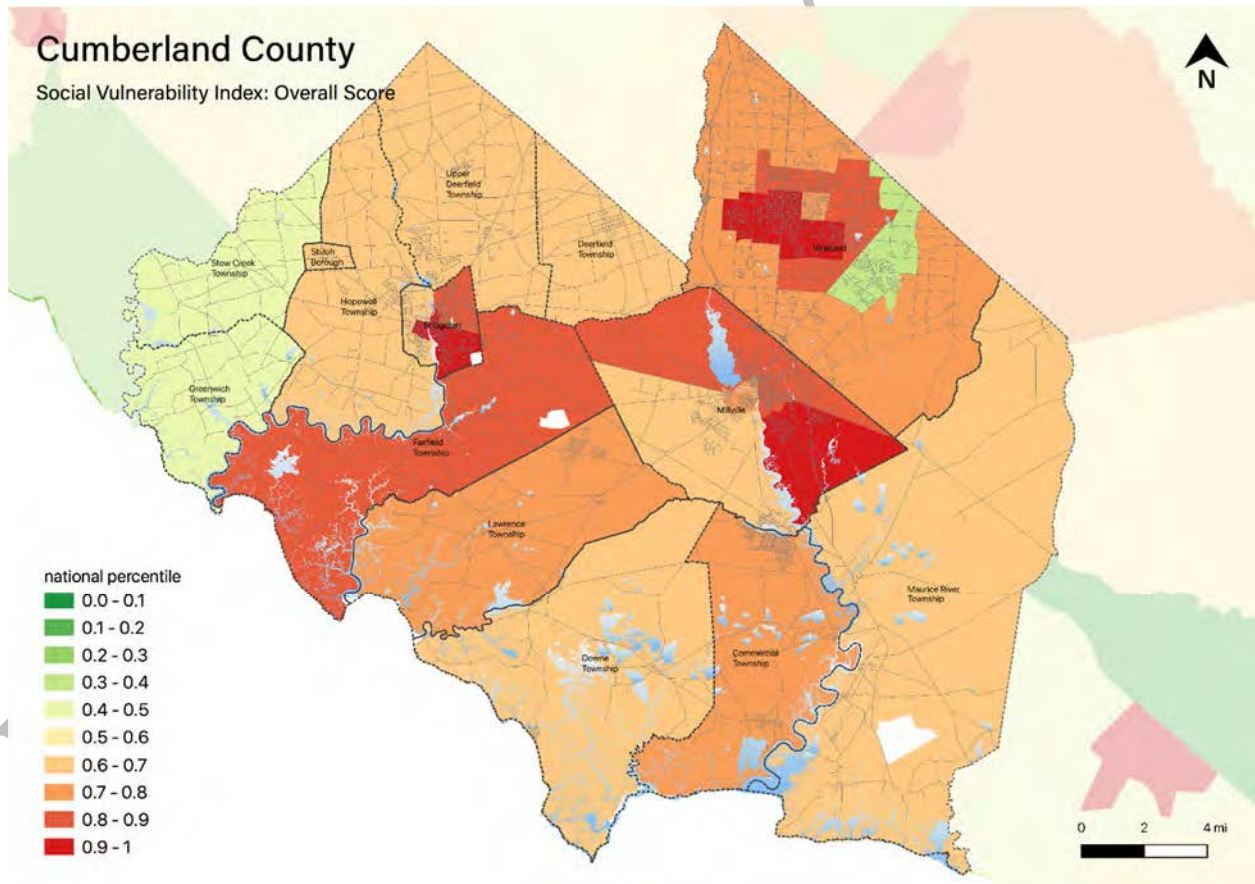
Demographic considerations include general population and land use factors. Table 11-7 includes current population estimates and changes since the previous US Census²⁹:

Table 11-7: Millville City General Population Demographics

Metric	Current Estimates
2010 Population	28,400
2019 Population	27,721
Percent Population Change (2010-2019)	- 2.39%
Land Area	42.00 sq. miles
Population Density	660.0 / sq. mile

Demographic considerations also include differences in social vulnerability³⁰. Figure 11-6 shows the overall Social Vulnerability (SVI) Index overall scores for Cumberland County.

Figure 11-6: Cumberland County Social Vulnerability Index: Overall Scores



²⁹ US Census, 2019 ACS 5 Year Estimates, Table ID DP5

³⁰ Social vulnerability considerations **will be** described in *Section 3: Hazard Identification and Risk Assessment* of the CC HMPU Base Plan.

Part 3: Hazard Identification and Risk Assessment

For Millville City, Table 11-8 includes selected metrics where social vulnerability considerations are notably higher when compared with all national census tracts:

Table 11-8: Millville City Social Vulnerability Considerations³¹

Metric	Percentile
Socioeconomic Status	83 rd
Household Composition & Diversity	92 nd
Minority Status & Language	46 th
Housing Type & Transportation	65 th

In addition, the percentage of residents earning below poverty level = 19.1% (compared with the average in New Jersey of 10.4%).

Part 3.6: Observations

- Outreach and guidance should be provided for residents, business owners, and property owners for:
 - Properties in or near sea level rise, flood zones, or wildfire hazard areas.
 - Older buildings to help evaluate potential risk of damage due to hazards such as Earthquake, High Winds, and Severe Winter Weather (i.e., heavy snow loads).
- All critical facilities are potentially vulnerable to Earthquake, High Winds, and Severe Weather (heavy rains in summer and snow loads in winter).
- Several critical facilities are potentially vulnerable to Sea Level Rise, Flood, and Wildfire and will be identified as priorities for follow-up critical facility field evaluations.
- Priority for follow-up should also be focused on critical facilities housing vulnerable populations related to Extreme Temperature and Severe Weather hazards. For example, determining and documenting (cross referencing EOP) how residents will be moved to facilities providing shelter including cooling and warming centers (all of which would need adequate back-up power and hardening).

³¹ All supporting data for SVI can be viewed at https://docs.google.com/spreadsheets/d/10zb_Qlg2CgGxb45_fcKiP46swaC16-fORxYTIOiAKP0/edit#gid=1481479799

Part 3: Hazard Identification and Risk Assessment

Part 3.7: Hazard Priorities [review / confirm or revise highlighted entries]

As a key step in the Hazard Identification and Risk Assessment (HIRA) process, the twelve (12) natural hazards identified in the CC HMPU Base Plan were discussed during the Municipal Working Group Work Sessions and the relative priority of these hazards was identified.

Based on their personal experience as well as the results of the HIRA, the Municipal Working Group rated the hazards as follows:

High Priority

- Dam Failure
- Flood
- High Wind

Moderate Priority

- Coastal Erosion & Sea Level Rise
- Extreme Temperature: Hot & Cold
- Severe Weather – Summer
- Severe Weather – Winter

Low Priority

- Drought
- Earthquake
- Wildfire

Two additional hazards were considered but were not considered applicable to the municipality:

- Geologic Hazards
- Levee Failure

Part 4: Mitigation Measures

Part 4: Mitigation Measures

Part 4 includes six subparts:

- *Part 4.1: Mitigation Goals and Strategy*
- *Part 4.2: NJ4 HMP Mitigation Measures*
- *Part 4.3: Municipal Mitigation Measures – Identification*
- *Part 4.4: Municipal Mitigation Measures – Implementation*
- *Part 4.5: Multi-Jurisdictional Mitigation Measures*
- *Part 4.6: Authorities, Policies, Programs, Resources, and Plan Integration*

Part 4.1: Mitigation Goals and Strategy [review / confirm or revise highlighted entries]

Goals were originally established by the SDVR Hazard Mitigation Steering Committee and validated by the four County Hazard Mitigation Working Groups in response to risk and capability assessment results.

As part of the NJ4 HMP plan update process, these goals were reviewed and edited by the Municipal Working Groups for use in the Municipal Appendices. In addition, the Municipal Working Groups for the CC HMPU reviewed and [reaffirmed/edited] these goals for continued use in the Appendices.

All mitigation measures in the Municipal Appendix are related to at least one of these four goal statements.

- **Goal 1: Improve education and outreach efforts** regarding potential risk of natural hazards and appropriate mitigation measures that can be used to reduce risk (including programs, activities, and projects)
- **Goal 2: Improve data collection, use, and sharing** to reduce the risk of natural hazards
- **Goal 3: Improve capabilities and coordination** at municipal, county, and state levels to plan and implement hazard mitigation measures
- **Goal 4: Plan and implement projects** to mitigate identified natural hazards, known problems, and areas of concern

Based on these goals, the results of the HIRA, and experience of participants in the plan update process, the Municipal Working Group identified an overarching strategy for mitigation:

- Identify and address known problems or areas of concern for critical facilities and vulnerable populations
- Provide opportunities for residents and property owners to access available information about risk reduction and mitigation measures, in particular for Repetitive Flood Loss properties
- Institutionalize hazard mitigation into municipal activities and programs through regular interactions of the Municipal Working Group and integration of related regulatory programs and planning initiatives
- Stay informed regarding changing conditions and related improvements in hazard and risk data due to future natural hazard events and increasing understanding of the effects of climate change and use the information as part of periodic evaluations of and refinements or additions to the municipality's mitigation program

The mitigation measures [to be] described in Parts 4.3 through 4.5 of the Municipal Appendix reflect this strategy.

Part 4: Mitigation Measures

Part 4.2: NJ4 HMP Mitigation Measures

Known problems and areas of concern were the basis for mitigation measures identified in the NJ4 HMP. In cases where these problems and concerns still exist at the time of the CC HMPU, the related NJ4 HMP mitigation measures **[will be]** candidates for inclusion in the Municipal Appendix.

Table 11-9 identifies the status of mitigation measures included in the NJ4 HMP. These entries were based on information provided by the Municipal Working Group. In some cases, the NJ4 HMP mitigation measures **[will be]** carried over as part of the Municipal Appendix as **[will be]** indicated in the “Comments” column and the far right-hand column of Table 11-9.

Table 11-9: Status of Millville City NJ4 HMP Mitigation Measures

Mitigation Action, Program, or Project	Status	Comments	Mitigation Measure # 3233
M-1: Identify and pursue outreach and education opportunities to inform municipal residents, businesses, and property owners.	Work-in-progress	Work-in-progress included [identify any work-in-progress for these three mitigation measures, e.g., use of City website for emergency or hazard information dissemination, follow-up with facilities regarding projects, informal discussions among City officials, etc.]	To be carried over as part of M-1
M-2: Prioritize critical facilities and complete site and facility surveys to identify vulnerabilities and potential mitigation measures.			
M-3: Prioritize recurrent drainage problem areas and initiate data collection to track unreimbursed damages and related response and recovery expenses.			
M-4: Conduct regular Municipal Working Group meetings.			
M-5: Upgrade back-up emergency power generator at City Hall (CF-1).	No progress, funding issues	There are also difficulties in where to physically place a generator.	To be carried over as [# TBD]
M-6: Install permanent back-up emergency power generator at Public Works Yard (CF-7).	No progress, funding issues		To be carried over as [# TBD]
M-7: Install permanent back-up emergency power generator at Airport Well #2A (CF-19).	[identify status with Water Utility Department]		To be carried over as [# TBD]
M-8: Install permanent back-up emergency power generator at Airport Well #4 (CF-20).	[identify status with Water Utility Department]		To be carried over as [# TBD]

³² Detailed information for identification and implementation of municipal (M-#) mitigation measures **[will be included]** in Tables 11-10 and 8-11.

³³ Detailed information for identification and implementation of multi-jurisdictional (MJ-#) mitigation measures **[will be included]** in Table 11-12.

Part 4: Mitigation Measures

Mitigation Action, Program, or Project	Status	Comments	Mitigation Measure # 3233
M-9: Address inflow and infiltration into sewer manholes and conveyance systems	Work-in-progress	[identify nature of work-in-progress with Sewer Utility Department including responsible party(ies), and anticipated completed date]	To be carried over as [# TBD]
M-10: Provide building retrofits against flood and high wind damage for Millville Senior High School (east side shelter) (CF-48).	[identify status with School Board]		To be carried over as [# TBD]
M-11: Provide building retrofits against flood and high wind damage for Rieck Avenue School (west side shelter) (CF-51).	[identify status with School Board]		To be carried over as [# TBD]
M-12: Address repetitive flooding in Maurice River Corridor due to cascading dam releases and potential failure as well as riverine flooding.	[identify status]		To be carried over as [# TBD]
M-13: Address identified Repetitive Flood Loss Properties.	[identify status]		To be carried over as [# TBD pending receipt of information from FEMA RII]
M-14: Create safety zones around critical facilities in wildfire risk areas.	No progress	City believes project needs to be coordinated with NJ State Forest Service	To be carried over as multi-jurisdictional mitigation measure [# TBD]
MJ-1: Address repetitive flooding in White Marsh Run Corridor.	[identify status]		To be carried over as multi-jurisdictional mitigation measure [# TBD]
MJ-2: Address repetitive flooding in Petticoat Stream Corridor including South 2nd Street / Maylin Street and roadways in Village Apartments vicinity.	Work-in-progress	State may be working in the South 2 nd Street area. City has done stream maintenance in Petticoat Stream.	To be carried over as multi-jurisdictional mitigation measure [# TBD]
MJ-3: Establish interconnection with Vineland City water system.	[identify status]		To be carried over as multi-jurisdictional mitigation measure [# TBD]

Part 4: Mitigation Measures

Part 4.3: Municipal Mitigation Measures – Identification

Table 11-10 [will include] the list of mitigation measures that are considered the responsibility of the municipality. These mitigation measures:

- Reflect the goals and strategy identified in Part 4.1
- Include projects carried over from NJ4 HMP as detailed in Part 4.2
- Include new projects, programs or activities identified by the Municipal Working Groups including measures to address known problems or areas of concern for critical facilities and vulnerable populations
- Address Repetitive Flood Loss (RL) and Severe Repetitive Flood Loss Properties (SRL)³⁴ if applicable

Table 11-10 [will include]:

- Brief description of the mitigation action, program, or project
- Hazard(s) addressed by the measure
- Relevant goal(s) addressed by the measure
- Whether the measure pertains to existing or new structures or both

Note: Mitigation measures with discrete locations [will be] shown in Figure 11-7.

Table 11-10: Millville City Municipal Mitigation Measures Identification

#	Mitigation Action, Program, or Project	Hazard(s)	Goal (s)	Existing or New Structures
M-1	<p><u>Municipal Mitigation Program</u> – including sustained efforts in cooperation with Cumberland County Office of Emergency Management (CC OEM) to:</p> <ul style="list-style-type: none"> ▪ Conduct outreach and education for residents, businesses, and property owners ▪ Complete critical facility field evaluations to identify potential vulnerabilities and mitigation measures ▪ Compile relevant data regarding hazard impacts ▪ Support regular interactions of the Municipal Working Group ▪ Seek integration of hazard mitigation with other parallel planning initiatives 	All	All	All

³⁴ Section 3: Hazard Identification and Risk Assessment of the CC HMPU Base Plan [will include] a description of RL and SRL properties.

Part 4: Mitigation Measures

Part 4.4: Municipal Mitigation Measures – Implementation

Table 11-11 [will include] information identified by the Municipal Working Group:

- Part(ies) responsible for following up with implementation of the measure
- Priority for implementation considering a range of criteria³⁵
- Project Type to help determine funding options and implementation mechanisms at the municipal level³⁶
- Estimated Cost, including estimates provided by the Municipal Working Group or approximate ranges for projects that are in early stages of development
- Target Date, indicating desired completion dates assuming availability of funding
- Next step(s) anticipated to implement the identified mitigation measures at the municipal level

Table 11-11: Millville City Municipal Mitigation Measures Implementation

#	Mitigation Action, Program, or Project	Responsible Part(ies)	Priority	Project Type	Estimated Cost (\$)	Target Date	Next Step(s)
M-1	Municipal Mitigation Program	Office of Emergency Management	High	Program	Staff Time	On-going, sustained effort	<ul style="list-style-type: none"> ▪ Identify outreach and education objectives and methods (working with CC OEM) ▪ Set priorities (if necessary) and initiate critical facility field assessments ▪ Identify schedule for plan updates (for plan integration efforts)

³⁵ Section 4: Mitigation Measures of the CC HMPU Base Plan [will include] a description of evaluation criteria considered by the Municipal Working Group.

³⁶ Section 4: Mitigation Measures of the CC HMPU Base Plan [will include] a description of project types and related information regarding funding options and implementation mechanisms.

Part 4: Mitigation Measures

Part 4.5: Multi-Jurisdictional Mitigation Measures

During the Municipal Working Group Work Sessions, the Municipal Working Group [will identify] some NJ4 HMP mitigation measures that need to be carried over, as well as new areas of concern, as mitigation measures where implementation requires participation or leadership from other levels of government, including county, state, and federal agencies. These multi-jurisdictional mitigation measures [will be] included in Table 11-12.

Section 4: *Mitigation Measures* of the CC HMPU Base Plan [will describe] multi-jurisdictional implementation strategies in detail. Section 4 [will identify] multi-jurisdictional mitigation measures that Municipal Working Groups believe are partly or wholly the responsibility of County agencies. These measures [will be] referred to the County Working Group for consideration. As part of the mitigation measures in the County Appendix to the NJ4 HMP Regional Hazard Mitigation Plan, the County Working Group will be working with the municipalities to identify:

- Specific responsibilities amongst different level(s) of government to address these problem areas
- Mitigation measures or related projects which may address the described problem areas that are already acknowledged as County responsibilities including identifying the appropriate County agency or department taking the lead role and status of implementing these mitigation measures
- Which, if any, additional mitigation measures the member agencies of the County Working Group will assume responsibility to implement

Note: Multi-jurisdictional mitigation measures with discrete locations [will be] shown in Figure 11-7.

Table 11-12: Millville City Multi-Jurisdictional Mitigation Measures

#	Problem Description	Hazard(s) Addressed	Goal Addressed	Applies to Existing or New Structures	Potential Partners	Priority

Figure 11-7: Millville City Mitigation Project Locations

Preliminary Draft

Part 4: Mitigation Measures

Part 4.6: Authorities, Policies, Programs, Resources, and Plan Integration

Part 4.6 includes three (3) subparts:

- Authorities, Policies, and Programs - Cross referencing relevant information and recommendations in the CC HMPU Base Plan regarding existing authorities, policies, and programs in the region and specific information about the jurisdiction's participation and continued compliance in the National Flood Insurance Program (NFIP)
- Capabilities and Coordination - Cross referencing relevant information and recommendations in the CC HMPU Base Plan regarding improving capabilities and coordination at the municipal level and specific information about the jurisdiction's available resources
- Plan Review and Integration – Identifying plans and programs included in the development of Plan Integration recommendations in the CC HMPU Base Plan

Authorities, Policies, and Programs

Section 1.3: Existing Authorities, Policies, Programs, and Resources of the CC HMPU Base Plan **will summarize** relevant authorities, policies, and programs related to hazard mitigation in the County including the NFIP.

Continuing municipal participation in the NFIP as part of the implementation of the CC HMPU by the municipality, includes:

- Involvement of Floodplain Manager / Administrator during the CC HMPU implementation process
- Commitment to adopt updated FIRMs and evaluate / update the municipality's Flood Management Plan and/or Ordinance as appropriate per recommendations **to be included** in Section 4.6 of the CC HMPU Base Plan

Capabilities and Coordination

The update of the NJ4 HMP **will include** reexamining municipal hazard mitigation capabilities; potential for improving capabilities and coordination within and between jurisdictions; and plan integration considerations, including:

- *Section 1.3: Existing Authorities, Policies, Programs, and Resources* of the CC HMPU Base Plan **will include** summary statements regarding county and municipal resources and the impact of resource limitations on the overall approach to the CC HMPU mitigation strategies.
- *Section 4: Mitigation Measures* of the CC HMPU Base Plan **will include** summary observations and recommendations concerning:
 - Hazard mitigation planning and mitigation measure implementation capabilities and coordination at the county and municipal levels
 - Coordination within municipal governments, between municipal governments and their communities, and between municipal, county, and state agencies responsible for hazard mitigation

Part 4: Mitigation Measures

Plan Review and Integration

Specific documents obtained during the plan update process from the Municipal Working Group include:

- Emergency Operations Plan (2021)
- Floodplain Damage Prevention Ordinance
- Zoning and Land Development Ordinances³⁷
- Master Plan (2005)³⁸ and Reexamination Report (2012)³⁹
- Zoning Map (2011)⁴⁰
- GIS Viewer⁴¹
- 2014 Capital Improvement Budget and Capital Improvement Program
- Draft “Getting to Resilience” Recommendations Report⁴², , August 2014

Need to identify for *highlighted* entries:

- ✓ Current status of all plans?
- ✓ For plans that have been “updated”, when was the update completed?
- ✓ For plans where “no update” has occurred, is an updated scheduled, and if so, when and who is the responsible party?

Table BP.4-4 in *Section 4.6: Plan Review and Integration* of the CC HMPU Base Plan:

- **Will identify** the primary plans and documents collected from each of the participating municipalities.
- **Will include** the results of reviewing the primary plans and documents to determine the extent to which these documents reflect up-to-date hazard risk and mitigation.
- **Will include** recommendations for integrating the results of the CC HMPU, including hazard mitigation data, goals, measures, and/or recommendations with existing plans and programs at the municipal level that are relevant to all participating municipalities and incorporated by reference in each of the jurisdiction-specific Appendices including:
 - Hazard Assessments
 - Emergency Operations Plans
 - Floodplain Management Ordinances
 - Master Plans and Reexamination Reports
 - Other plans and documents

The plan maintenance process **will articulate and specify** a commitment to review and follow these recommendations during future scheduled updates of these various documents as considered appropriate by the Working Group and the governing body of the municipality.

³⁷ <http://ecode360.com/MI1908?needHash=true>

³⁸ <http://www.millvillenj.gov/DocumentCenter/Home/View/559>

³⁹ <http://www.millvillenj.gov/DocumentCenter/Home/View/577>

⁴⁰ <http://www.millvillenj.gov/DocumentCenter/View/561>

⁴¹ <http://viewer.myidv.com/map/71332c32630bfb/Millville-City-Public>

⁴² Prepared by the Jacques Cousteau National Estuarine Research Reserve

Attachment A: Public Review Comments

Public review comments [will be] recorded during the public review of the Millville City Preliminary Draft and Draft versions of the Municipal Appendix on [dates to be determined]:

Table 11.A-1: Public Review Comments

Comment Date and Time	Comment	Response

Preliminary Draft

Attachment B: Adoption Resolution

Following this page [will be] the Adoption Resolution for the Millville City Municipal Appendix as approved by the Millville City Commission.

Preliminary Draft

Attachment C: Approval Letter

Following this page [will be] the Approval Letter for the Millville City Municipal Appendix.

Preliminary Draft